

Stravifloor Mat-F_e

Installation Manual (as underlayment)

Installation Tools and Components

- Stanley knife
- Personal protective equipment (PPE)

1 / Subfloor Conditions & Preparation

Temperature > 10°C/50°F / Relative Humidity < 75%

In general, subfloor conditions should comply with the requirements of the code of good practices and specific instructions from the manufacturer of the finished floor.

This means that all subfloors should be clean, dry, level and structurally sound and free from any cracks and contamination. All cracks and holes should be adequately repaired to ensure a smooth finished appearance, patching and levelling compounds must be suitable for the end use application and must be compatible with the adhesives to be used (when applicable). The moisture content of the subfloor should not be more than 2.5% (CM) by weight measured on concrete subfloors.

It is necessary to open the packaging at least 24 hours before installing Stravifloor Mat-F_e and leave it in the room where the installation will be carried out.



2 / Vapour Insulation Barrier (only for non-glued floors)

Moisture-sensitive flooring systems require a permanently dry subfloor. In case of mineral substrates (e.g. concrete, screed, etc.) a water vapor diffusion control layer in the form of a moisture-proofing film is recommended for use on mineral substrates as a general principle in order to protect the floor covering from damages caused by rising residual moisture from the substrate.

The PE (Polyethylene) vapour insulation barrier should be installed prior to Stravifloor Mat-F_e. The PE foil should cover the entire flooring area, minimum 50 mm (2") wide vertically around the perimeter of the entire floor. Install by overlapping (minimum 100 mm (4")) the PE foil, and use an adequate tape to fix it if necessary.

After completion, the PE foil should cover the entire concrete area, not leaving any gaps. Never fasten the PE foil barrier mechanically with screws, nails or staples as this will severely diminish the performance of the insulation barrier.

It is also possible to install the PE vapour barrier over the underlayment.

3 / Lateral Isolation Strip

Install Perimeter Strip against the walls up to the final floor level so that the floor covering will be laterally decoupled.

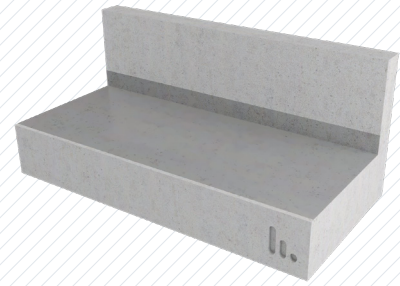
Stravifloor Mat-F_e can be turned up the wall if perimeter isolation strips are not available (check next renders).

All vertical elements such as walls, columns, piping and other elements protruding from the floor must be decoupled.

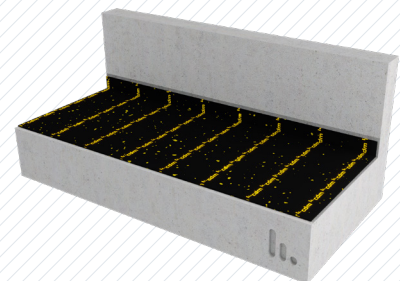
4 / Underlay (only for non-glued floors)

Cut the underlay roll lengthwise to the desired length and install it directly over the entire floor surface (covering the wall up to a 30 mm (1-3/16") height with the edge, if the perimeter isolation strip was not used), removing all trapped air.

After finishing the installation, the underlay should cover the entire floor area without any cracks and with the joints perfectly sealed, preferably with adhesive tape.



Non-glued floors
concrete slab + vapor barrier



Non-glued floors
concrete slab + vapor barrier + Stravifloor Mat-F_e

5 / Underlay (glued floors)

It is not essential to start the installation in the centre of the room, it is more practical to start along the longest wall running the rolls in parallel. Wherever possible the product should be installed at 90° to the finished floor so that the chance of coinciding joints is minimized.

The Stravifloor Mat-F_e should be dry laid into workable areas and cut at least 50 mm (2") over the length required and allowed to relax for the acclimatization period as advised above. The product should then be cut using a straight edge utility knife and a gap of around 3 mm (1/8") should be left around the perimeter to allow for any expansion.

The Stravifloor Mat-F_e should not be in direct contact with any wall, column or skirting board that has not been isolated using a perimeter isolation strip.

It should be adhered to the subfloor using a recommended adhesive (please refer to the latest list of recommended adhesives) strictly in accordance with the installation instructions of the adhesive manufacturer.

It is particularly important to refer to the adhesive manufacturer's advice in respect of trowel sizes, application rates/coverage and open times.

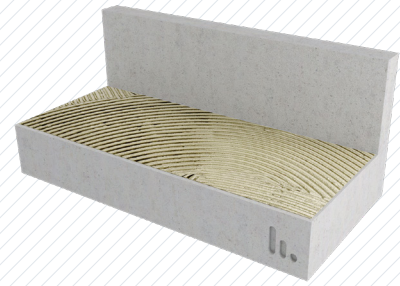
Only spread enough adhesive to cover a workable area, and after the required open time lay the Stravifloor Mat-F_e into the adhesive and smooth out from the centre using a carpet glider or hand roller to ensure that the product is fully into the adhesive and all air bubbles are released. The Stravifloor Mat-F_e should then be fully rolled into the adhesive using a 68 kg (150 lbs) articulated flooring roller to ensure full adhesion along the entire length and width of the product.

All edges should be butt jointed ensuring that all seams and joints are smooth without any voids but not too tight.

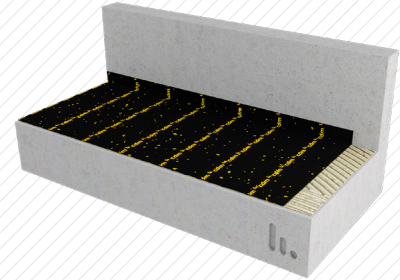
6 / Final Flooring

Always follow the manufacturer's recommended installation instructions.

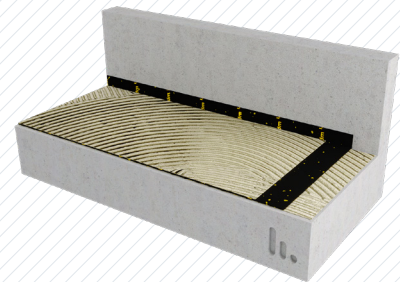
When the flooring application is completed, the exceeding part of the perimeter isolation strip must be cut.



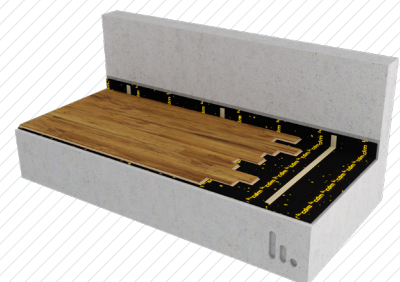
glued floors
concrete slab + adhesive



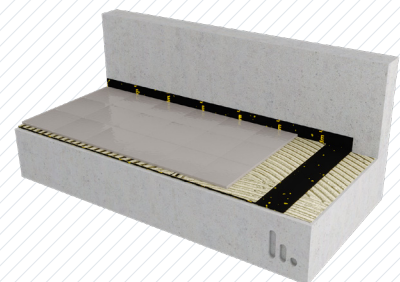
Glued floors
concrete slab + perimeter strip + Stravifloor Mat-F_e



Glued floors
concrete slab + adhesive + Stravifloor Mat-F_e
+ adhesive



Non-glued floors
concrete slab + vapor barrier + Stravifloor Mat-F_e
(incl. taped joints) + final floor



Glued floors
concrete slab + adhesive + Stravifloor Mat-F_e
+ adhesive + final floor

Recommended Adhesives

Underlay to Screed/Concrete

- Ball Styccobond F3, 44 or 58
- SikaBond 150 Premium Floor
- Uzin KE66
- Bostik Laybond HT
- Mapei Ultrabond ECO VS 90 Plus
- Mapei Ultrabond ECO S948 1k

Underlay to Old Ceramic

- Ball Styccobond F49 or F66
- Mapei Ultrabond ECO S948 1k

Carpet to Underlay

- Ball Styccobond F41
- SikaBond 150 Premium Floor
- Uzin U2100
- Bostik Laybond HT
- Bostik Laybond Carpet Tile Tackifier
- Mapei Ultrabond Eco Tack

Vinyl/PVC Tile to Underlay

- Ball Styccobond F44
- Uzin K66
- Bostik Laybond HT
- SikaBond 150 Premium Floor
- Mapei Ultrabond ECO VS 90 Plus

Ceramic to Underlay

- SikaBond-T8
- Mapei Granirapid
- Mapei Ultraflex S2 Quick

Hardwood to Underlay

- Ball Styccobond B95
- Uzin MK 92 S
- Bostik Laybond Wood MS
- SikaBond AT-80
- Mapei Ultrabond ECO S948 1K
- Mapei Ultrabond P992

DISCLAIMER

This information is accurate to the best of our knowledge at the time of issue. Information, data and recommendations provided are based on industry accepted testing and prior product usage. It is intended as descriptive of the general capabilities and performance of our products and does not endorse applicability for any particular project. We reserve the right to change products, performance, and data without notice. This document replaces all information supplied prior to the publication hereof.