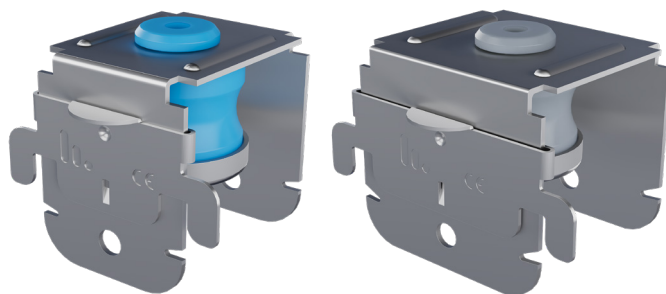


Stravilink CC40/60-P

Installation Manual

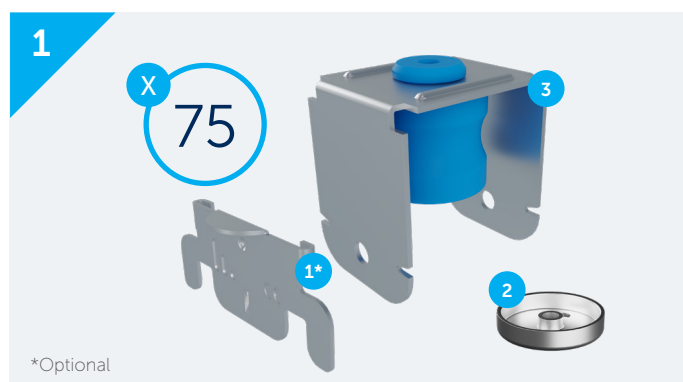
Installation Tools and Components

- Ink marker
- Pocket tape measure
- Cross line laser
- Chalk line with gear ratio
- Drilling machine
- Battery powered screwdriver
- Personal protective equipment (PPE)



Model*	Load Range [kg]	Pad Colour
Stravilink CC40/60-P240	10 – 30	Sky Blue
Stravilink CC40/60-P360	20 – 45	Silver Grey

*Stravilink CC40 is compatible with galvanized steel ceiling channels of 45/48 mm, while the Stravilink CC60 is compatible with galvanized steel ceiling channels of 60 mm.



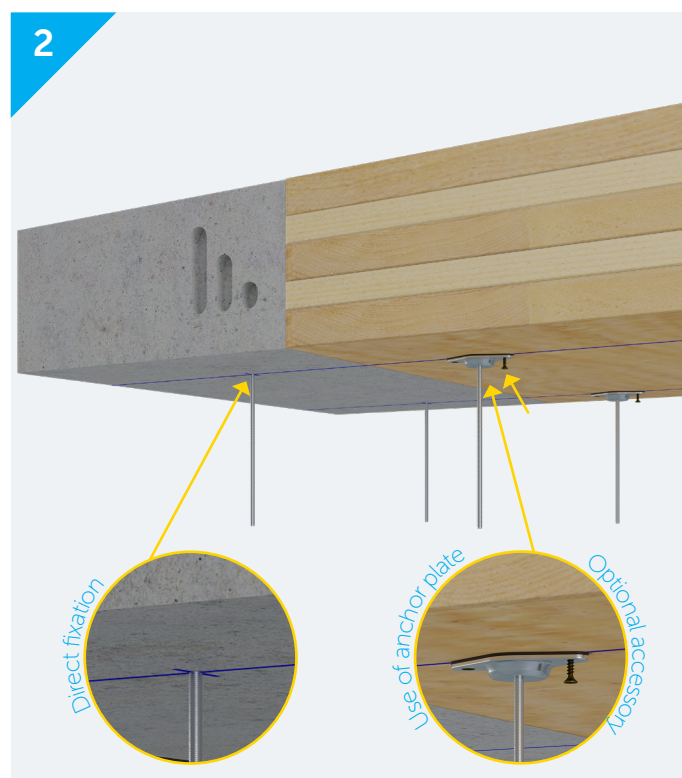
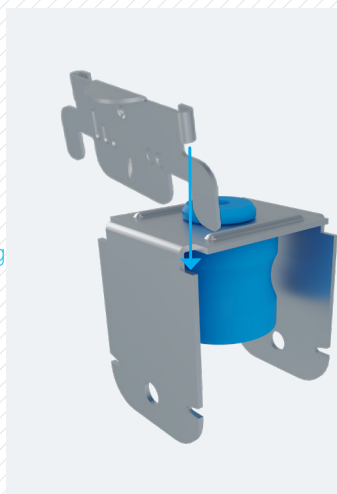
*Optional

1. Safety clip 2. Pad steel cap 3. Clip with elastomeric pad

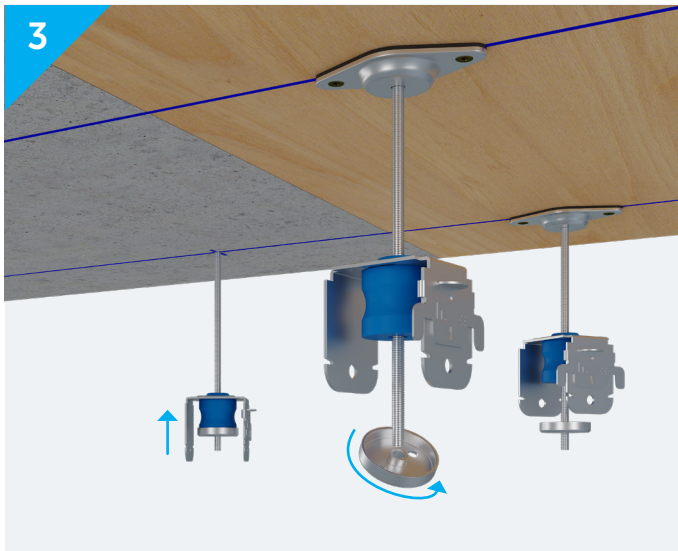
Each box contains 75 units of the three components: C clip with elastomeric pad, safety clip and pad steel cap

Optional: start by installing the safety clip onto the hanger.

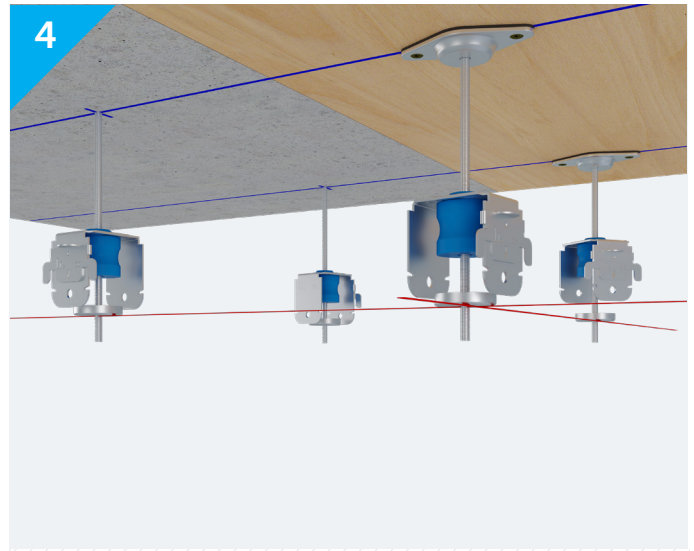
The product is available with double safety clip, upon request.



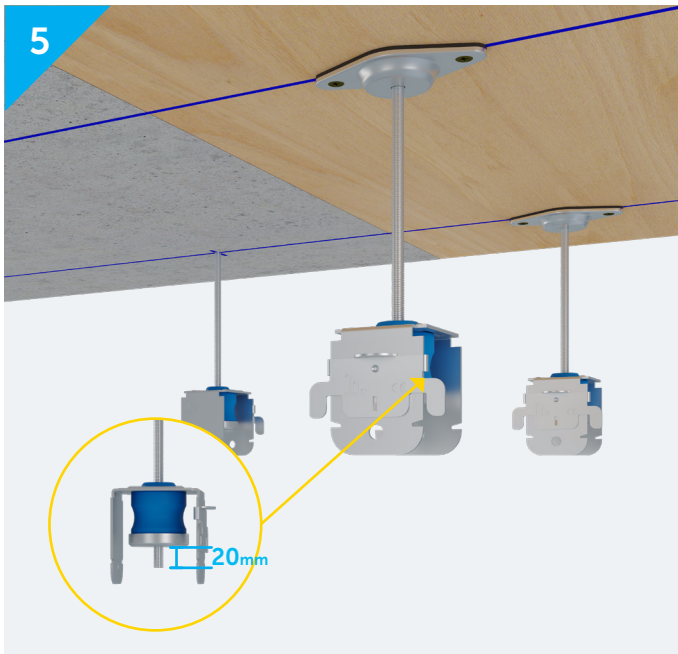
Fixings should be used that are suitable for the ceiling material type and load capacity. If a rod cannot be directly fixed to the slab's soffit, an anchor plate can be used, available upon request. The product comes in M6 as standard but is available in M8 upon request.



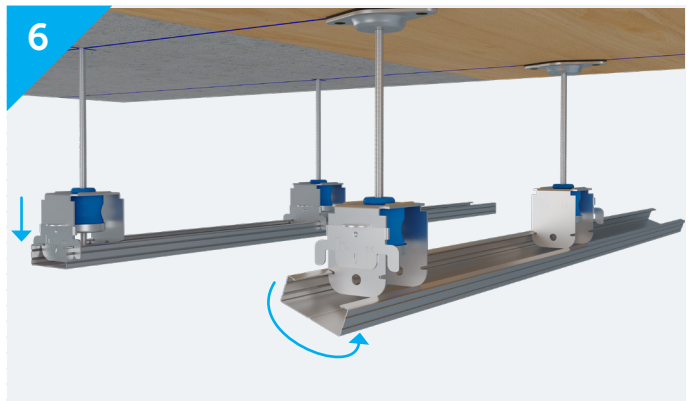
Insert the hanger onto the rod, then add the pad steel cap.



Set the position of the hangers and, consequently, the ceiling by levelling the pad steel cap using a laser.

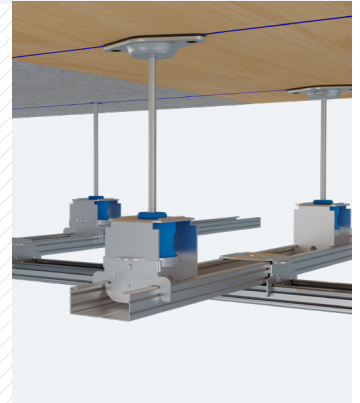


Slide the hanger down. Ensure that no more than 20 mm of the rod extends below the pad steel cap to prevent rigid contact with the channel that will be installed next.



Snap the metal profile into place and slide the safety clip down.

For double-grid ceilings, allow movement between profiles using an intersection connector.



Follow the manufacturer's recommendations for installing other components, ensuring no rigid contact with the surroundings to prevent acoustic bridging.
Use a CDM Stravitec Perimeter Strip and non-setting mastic for sealing.

DISCLAIMER

This information is accurate to the best of our knowledge at the time of issue. Information, data and recommendations provided are based on industry accepted testing and prior product usage. It is intended as descriptive of the general capabilities and performance of our products and does not endorse applicability for any particular project. We reserve the right to change products, performance, and data without notice. This document replaces all information supplied prior to the publication hereof.