

Stravifloor Mat-W_x

Installation Manual

stravifloor
by CDM Stravitec

Installation Tools and Components

- Stanley knife
- Personal protective equipment (PPE)

1 / Lateral Isolation Strip

Install Perimeter Strip against the walls up to the final floor level so the floating floor will be laterally decoupled.



2 / Underscreed Layer

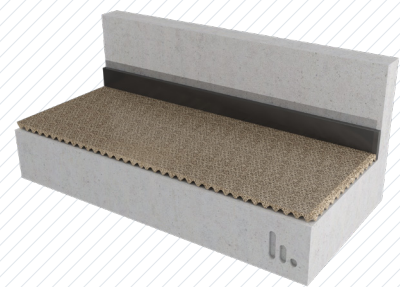
Unpack the Stravifloor Mat-W_x mat at least 24h prior to installation and store it in the room where the installation will take place. Install the mat side by side onto the subfloor with the wavy side directing to the structural floor, removing all trapped air and cut to the desired length.

Proceed the installation covering the entire floor. After completion, the Stravifloor Mat-W_x layer should cover the entire flooring area without gaps. Never fasten the underscreed layer mechanically to the subfloor.



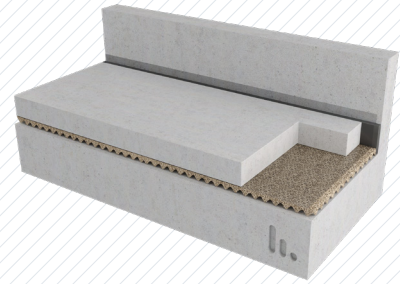
3 / Protection Layer

A protection foil covering the entire flooring area can be installed prior to the screed. Overlaps of minimum 100 mm should be made. Also cover the perimeter strip with the protection foil. Never fasten the protection foil mechanically, using screws, nails or staples.



4 / Screed or Reinforced Concrete Slab

Install screed or reinforced concrete floating slab. If the finishing includes a skirting board, make sure that there is no rigid contact between skirting board and floating floor.



DISCLAIMER

This information is accurate to the best of our knowledge at the time of issue. Information, data and recommendations provided are based on industry accepted testing and prior product usage. It is intended as descriptive of the general capabilities and performance of our products and does not endorse applicability for any particular project. We reserve the right to change products, performance, and data without notice. This document replaces all information supplied prior to the publication hereof.