

Straviwood WallBreak-S Datasheet

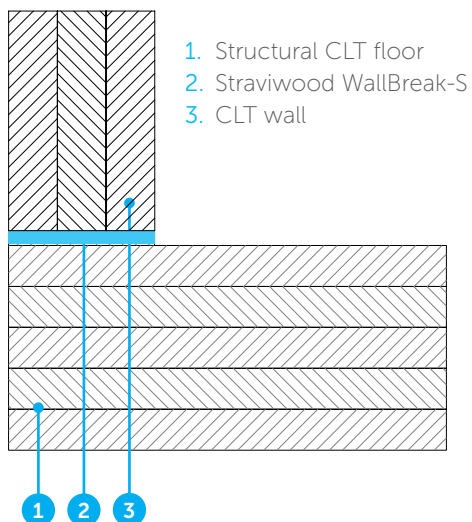


CHARACTERISTICS

- Ideal for wall-floor decoupling in CLT constructions
- Suited for all wood-based materials
- No additional tooling required for correct installation
- Material range with high load capacity, offering a wide range of workloads
- Excellent long term behaviour (low creep / differential deflection)
- Standard thicknesses of 12.5 mm (and 25 mm)
- Widths adapted to dimension of the wall
- Quick and easy to install
- Easy to cut to length
- Available with different types of resilient material (CDM-10x (7 types) & CDM-90x (13 types))
- Detailed installation plan available upon request
- Coefficient of friction $\geq 0,5$

In order to specify the correct Stravilink WallBreak-S solution our engineers will need to know the required acoustic performance, wall type and dimensions, and possible dead and live loads.

If necessary this system can work in parallel with special resilient fastening systems, as Straviwood WallBracket and Straviwood ModuLink, to reinforce the lateral stiffness of the isolated wall.



DISCLAIMER

This information is accurate to the best of our knowledge at the time of issue. Information, data and recommendations provided are based on industry accepted testing and prior product usage. It is intended as descriptive of the general capabilities and performance of our products and does not endorse applicability for any particular project. We reserve the right to change products, performance, and data without notice. This document replaces all information supplied prior to the publication hereof.