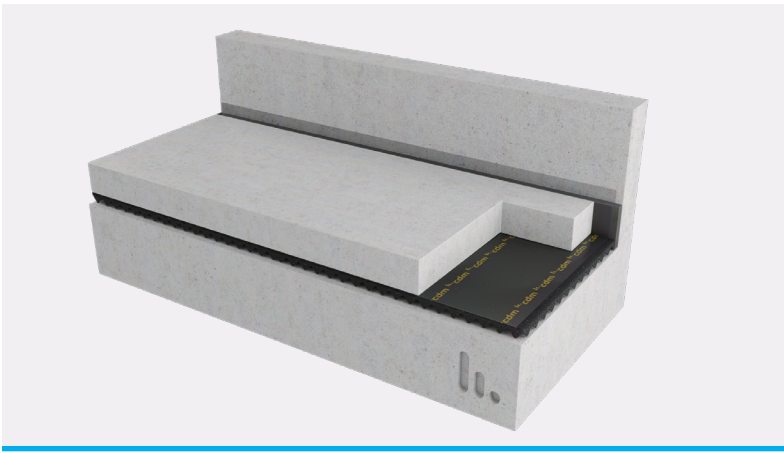


Stravifloor Mat-W Datasheet



Stravifloor Mat-W is a wavy, [low-profile roll-out isolation solution](#) made of regenerated rubber with a high-performance and resilient bonding agent, providing good structure-borne noise protection.

Stravifloor Mat-W can be used with gypsum/lightweight, or normal-weight concrete without the need for formwork, and can also be installed with plywood and cement board systems.

Stravifloor Mat-W provides a great level of impact noise reduction with minimal system thickness and is a cost-effective solution to achieve building code requirements for floor-ceiling assemblies. The wave-contoured underside of the mat reduces the contact area to the subfloor and reduces the dynamic stiffness of the material to maximize its acoustical performance.



CHARACTERISTICS

- Roll-out system
- Cost-effective
- Reduced build-up height
- No formwork required

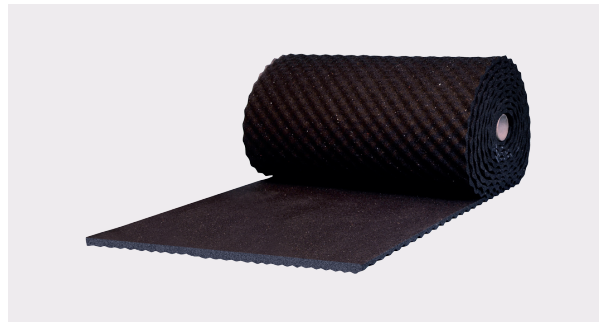


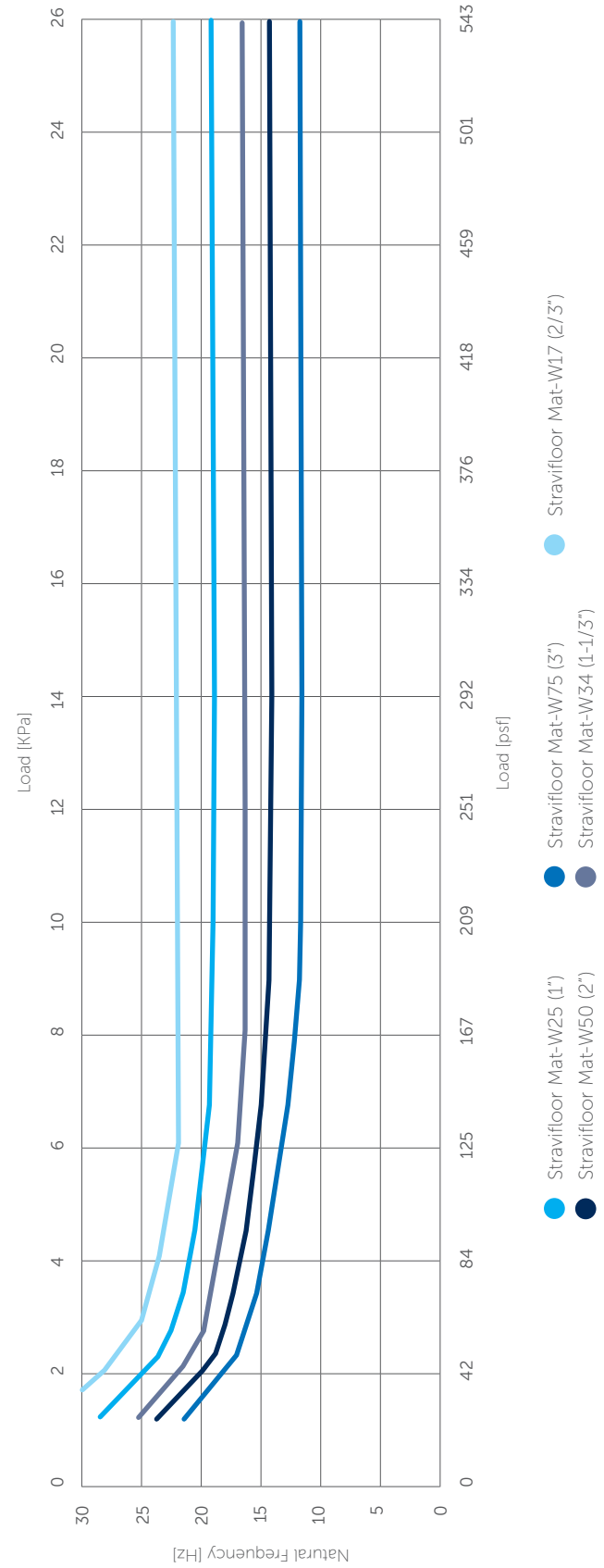
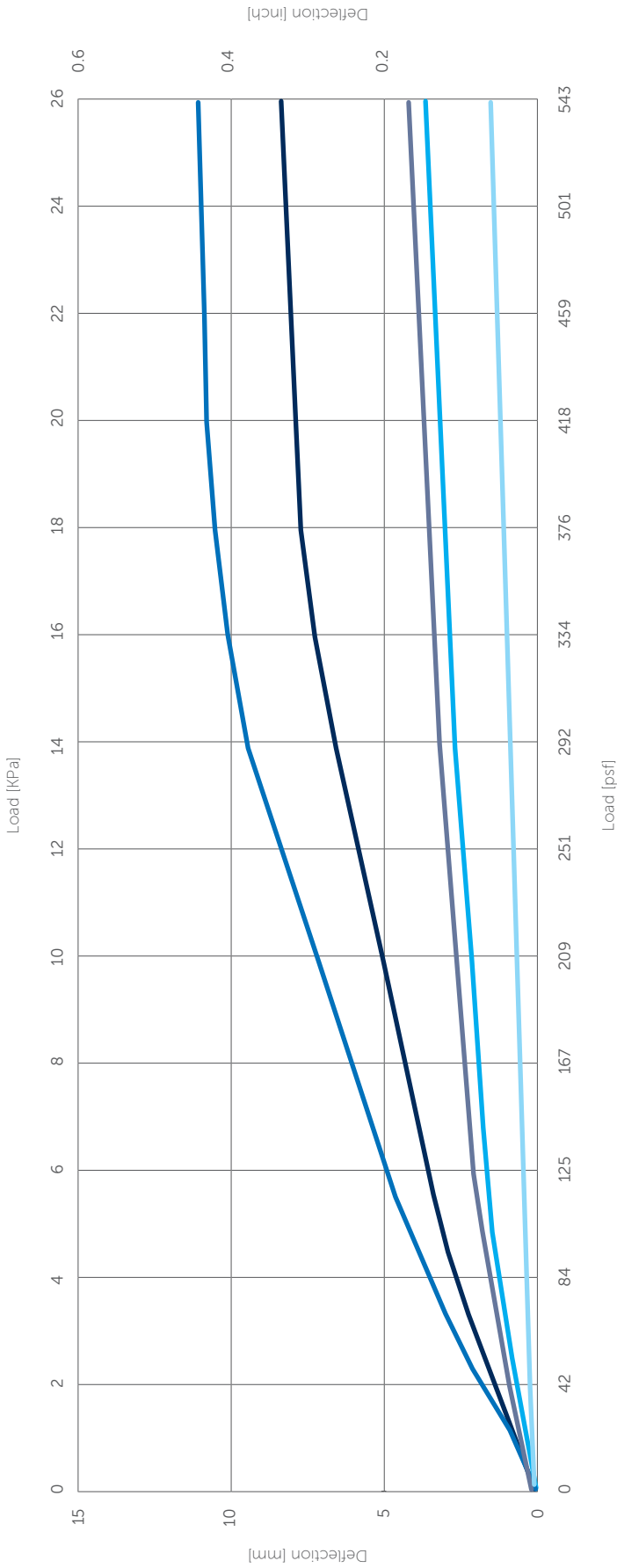
DIMENSIONS

Type

Nominal Thickness

	mm	inch
Stravifloor Mat-W17	17	2/3
Stravifloor Mat-W25	25	1
Stravifloor Mat-W34	34	1-1/3
Stravifloor Mat-W50	50	2
Stravifloor Mat-W75	75	3

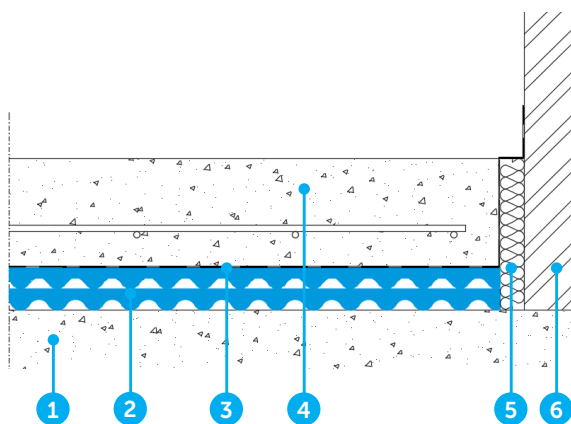






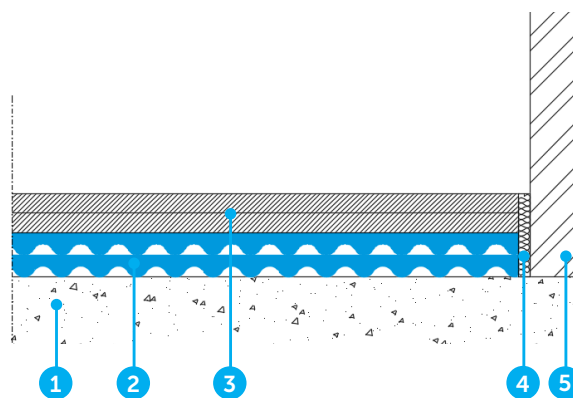
TYPICAL ASSEMBLIES

Concrete System



1. Structural slab
2. Stravifloor Mat-W50
3. PE-film (poly sheeting)
4. Reinforced concrete slab
5. Perimeter Strip
6. Wall

Panelized Raft System



1. Structural slab
2. Stravifloor Mat-W50
3. Load distribution layer (e.g. plywood raft)
4. Perimeter Strip
5. Wall

Note: an installation manual is available upon request.

DISCLAIMER

This information is accurate to the best of our knowledge at the time of issue. Information, data and recommendations provided are based on industry accepted testing and prior product usage. It is intended as descriptive of the general capabilities and performance of our products and does not endorse applicability for any particular project. We reserve the right to change products, performance, and data without notice. This document replaces all information supplied prior to the publication hereof.