

Stravifloor Prefab

Installation Manual

Installation Tools and Components

- Stanley knife
- Ink marker
- Pocket tape measure
- Chalk
- Staple gun (optional) (to fix PE film to formwork)
- Manual transpallet (optional)
- Adhesive spray and tape (if the perimeter isolation is done with a material different than the self-adhesive CDM Stravitec's Perimeter Strip)
- Personal protective equipment (PPE)

1 / Supporting Floor & System Components

Unpack and unroll all the system components and allow them to acclimatize for 24 hours prior to installation.

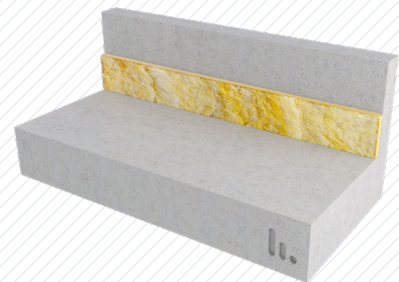
The flatness of the supporting floor should be a maximum of 1/8" (3 mm) over 10' (3 m) and 1/16" (1.5 mm) over 24" (60 cm) (according to ASTM E1155-14, ACI 302) to ensure a successful installation.

Ensure that the installation area is watertight and the supporting floor is dry and clean prior to installation.

2 / Perimeter Isolation

All walls, columns and service penetrations through the floating floor should be isolated using Perimeter Strip or medium density mineral wool strips.

The height of this isolation should be the distance between the supporting floor and the finished level of the floating floor.



3 / Stravifloor Prefab Installation

Using the installation plans supplied, mark out the location of each Stravifloor Prefab across the whole floor, using the reference numbers as a guide.

Follow the installation sequence as indicated on the plan.

4 / Tolerance Zones

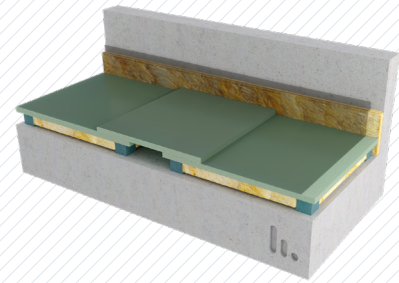
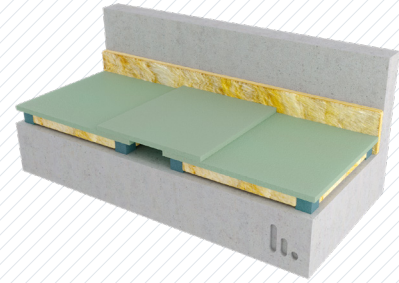
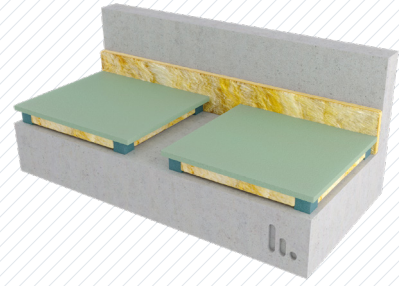
In order to cope with the dimensional discrepancies between the plan (according to which the system is produced) and the real situation (on site), it is good practice to integrate so called "tolerance zones" in two perpendicular directions.

Close off the tolerance zones by means of a larger cover plate in the same material as the formwork (usually supplied with the system). The tolerance capacity is dependent on the overlap.

5 / Polyethylene Sheeting Protection Layer

Layers of building grade polythene plastic sheeting should be installed over the entire area and continued up the wall to cover the perimeter isolation strip and then be secured to the wall using a 2" (50 mm) wide industrial grade self-adhesive tape.

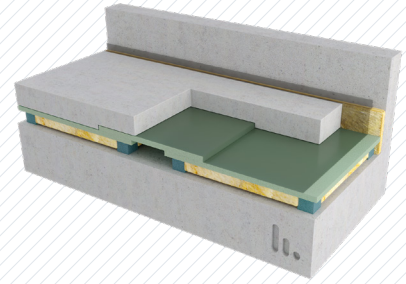
All overlaps should be a minimum of 4" (100 mm) and then sealed using the same tape. Ensure the polythene is fitted neatly into the corner areas of the floor to avoid any pocketing which could result in a reduction of slab thickness in these areas.



6 / Reinforcement Mesh & Concrete Pour

Install the reinforcement mesh - single or double grip (bottom and top) depending on the slab thickness - ensuring that the protection layer does not get punctured – any punctures should be repaired with sections of polythene sheeting and taped securely into place.

Concrete can now be poured to the required thickness.



DISCLAIMER

This information is accurate to the best of our knowledge at the time of issue. Information, data and recommendations provided are based on industry accepted testing and prior product usage. It is intended as descriptive of the general capabilities and performance of our products and does not endorse applicability for any particular project. We reserve the right to change products, performance, and data without notice. This document replaces all information supplied prior to the publication hereof.