

Notes

Legend

First submission	22/04/2025	LCH	A
Revision Description	Date	Drawn	Rev.

Load table

Drawing based on

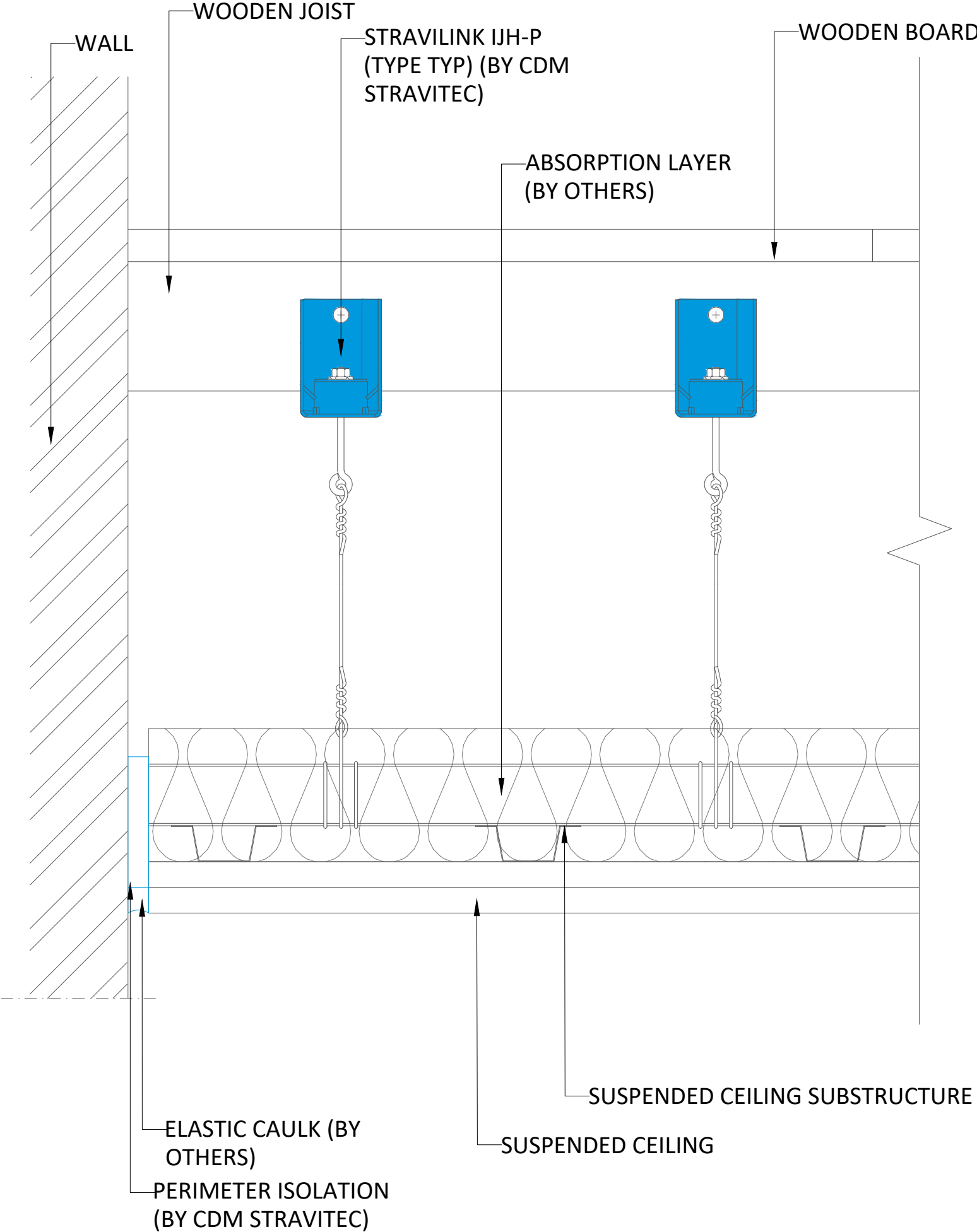


342 N. Queen St., Warehouse D
Lancaster, PA 17603
United States
PH:+1 (888) 454-6236
info-us@cdm-stravitec.com
www.cdm-stravitec.com

Stravilink IJH-P
Rod connection

Typical Cross Section - Stravilink IJH-P (US-CA)-01		Scale:
Drawn:		
LCH	22/04/2025	Format:
Design:		ANSI-B
Check:		
JMI		

c)



Notes

Legend

First submission	22/04/2025	LCH	A
Revision Description	Date	Drawn	Rev.

Load table

Drawing based on



342 N. Queen St., Warehouse D
Lancaster, PA 17603
United States
PH: +1 (888) 454-6236
info-us@cdm-stravitec.com
www.cdm-stravitec.com

Stravilink IJH-P
Wire connection

Typical Cross Section - Stravilink IJH-P
(US-CA)-02
Drawn: LCH 22/04/2025
Design: ---
Check: JMI

Scale: ---
Format: ANSI-B