

Notes

Legend

First submission	25/03/2025	LCH	A
Revision Description	Date	Drawn	Rev.

Load table

Drawing based on



342 N. Queen St., Warehouse D
Lancaster, PA 17603
United States
PH:+1 (888) 454-6236
info-us@cdm-stravitec.com
www.cdm-stravitec.com

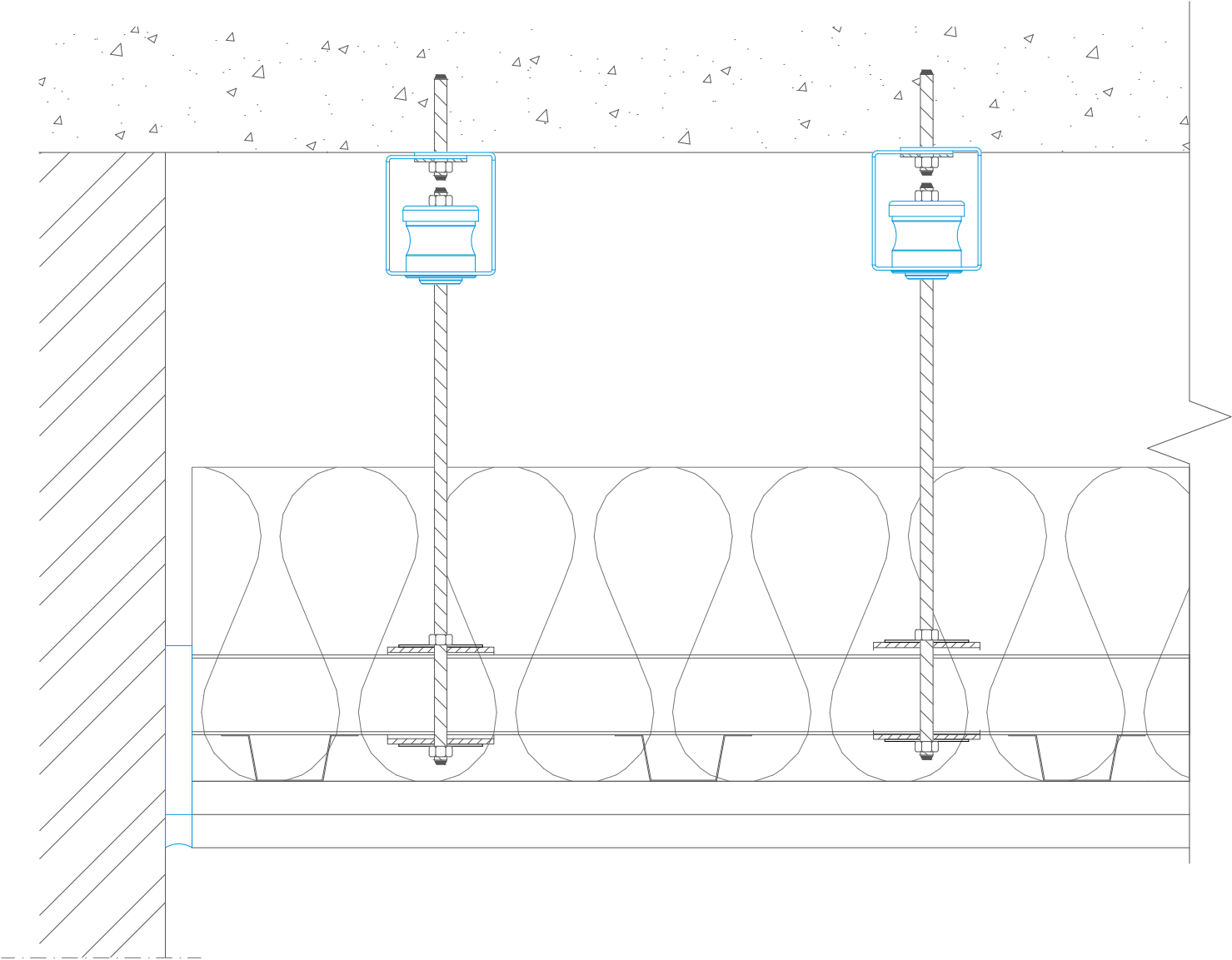
Stravilink DCH-P
Suspended from ceiling

Typical Cross Section - Stravilink
DCH-P (US-CA)-01
Drawn:
LCH 25/03/2025
Design:

Check:
JMI

Scale:

Format:
ANSI-B



Notes

Legend

First submission	25/03/2025	LCH	A
Revision Description	Date	Drawn	Rev.

Load table

Drawing based on



342 N. Queen St., Warehouse D
Lancaster, PA 17603
United States
PH:+1 (888) 454-6236
info-us@cdm-stravitec.com
www.cdm-stravitec.com

Stravilink DCH-P
Directly Fixed to ceiling

Typical Cross Section - Stravilink
DCH-P (US-CA)-02
Drawn:
LCH 25/03/2025
Design:

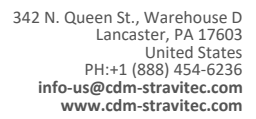
Check:
JMI

Scale:

Format:
ANSI-B

Load table

Drawing based on



Stravilink DCH-P
Suspended from ceiling (wire)

Format:

ANSI-B

JMI