

Straviwood WallBreak-P Datasheet



CHARACTERISTICS

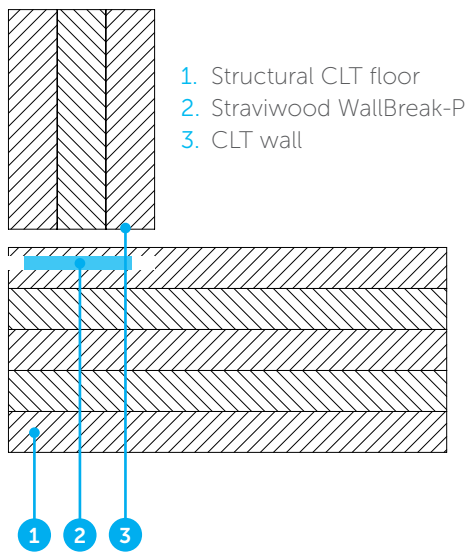
- Minimizes the contact surface
- Uses less material for a more sustainable solution
- Ideal for wall-floor decoupling in CLT constructions
- Suited for all wood-based materials
- No additional tooling required for correct installation
- Material range with high load capacity, offering a wide range of workloads
- Excellent long term behaviour (low creep / differential deflection)
- Standard thicknesses of 20 mm (other thicknesses available upon request)
- Detailed installation plan available upon request
- Coefficient of friction $\geq 0,5$
- Can be glued to the CLT wall either on site or in factory
- Available as loose pads or glued to HPL (clustered)
- Optional: the gap between the pads can be filled with light dense mineral wool (on site or in factory)
- Quick and easy to install

In order to specify the correct Stravilink WallBreak-P solution our engineers will need to know the required acoustic performance, wall type and dimensions, and possible dead and live loads.

If necessary this system can work in parallel with special resilient fastening systems, as Straviwood WallBracket and Straviwood ModuLink, to reinforce the lateral stiffness of the isolated wall.



TYPICAL ASSEMBLIES



DISCLAIMER

This information is accurate to the best of our knowledge at the time of issue. Information, data and recommendations provided are based on industry accepted testing and prior product usage. It is intended as descriptive of the general capabilities and performance of our products and does not endorse applicability for any particular project. We reserve the right to change products, performance, and data without notice. This document replaces all information supplied prior to the publication hereof.