



Stravilink RHD^{*}

Datasheet

Stravilink RHD is a [resilient head detail](#) isolating the head connection of a dry or wet wall from the construction above whilst providing lateral restraint.



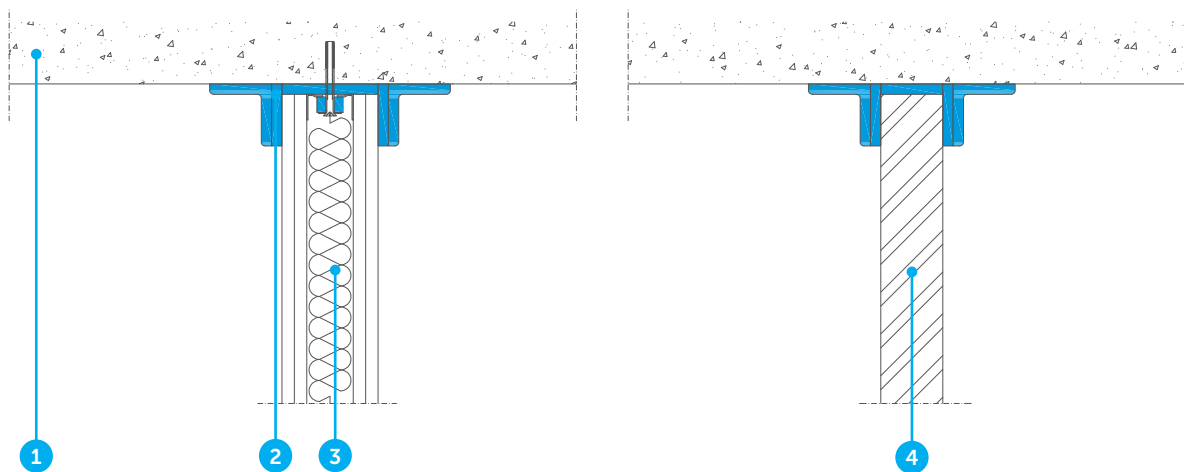
BENEFITS

- Cost effective
- Quick and easy to install
- Can be designed to provide head restraint for any type of wall construction
- Can be designed not to compromise the natural frequency of the isolation strip supporting the base of the wall
- Can be used in combination with floating floors, wall isolation and isolated ceilings to create box-in-box constructions
- Steel parts are hot dip galvanized
- Holes that are at least twice the diameter of the fixings used to fix the top stud are required to allow the fixings to be installed without touching the stud and bridging the isolation
- To design the Stravilink RHD, CDM Stravitec's engineers will need the following information:
 - The type of wall, ie. plasterboard or blockwork etc.
 - The width of the wall
 - If the top track of a plasterboard wall is fixed into the construction the spacing and diameter of the fixings

*Previously known as CDM-RHD



TYPICAL ASSEMBLIES



1. Structural reinforced concrete slab
2. Stravilink RHD

3. Absorption layer
4. Decoupled wall

DISCLAIMER

This information is accurate to the best of our knowledge at the time of issue. Information, data and recommendations provided are based on industry accepted testing and prior product usage. It is intended as descriptive of the general capabilities and performance of our products and does not endorse applicability for any particular project. We reserve the right to change products, performance, and data without notice. This document replaces all information supplied prior to the publication hereof.