

# Stravifloor Batten (Panelized) Installation Manual

## Installation Tools and Components

- Stanley knife
- Ink marker
- Pocket tape measure
- Cross line laser (optional)
- Chalk line with gear ratio
- Hand-held circular saw and/or jigsaw
- Battery powered screwdriver (+ screws)
- Adhesive spray and tape (if the perimeter isolation is done with a material different than the self-adhesive CDM Stravitec's Perimeter Strip)
- Manual transpallet (optional)
- Personal protective equipment (PPE)

## 1 / Supporting Floor Preparation

Check the supporting floor has a maximum inclination of 50 degrees and a maximum tolerance of 2 mm for smoothness.

Ensure the installation area is completely watertight and the supporting floor is dry and clean prior to installation.

Unpack and unroll the various components and allow them to acclimate to their environment for 24 hours or more before installation.

## 2 / Perimeter Isolation

All walls, columns and service penetrations through the floating floor should be isolated using Perimeter Strip self-adhesive backed isolation or strips of mineral wool.

The height of this isolation should be the distance between the supporting floor and the finished level of the floating floor.



---

### 3 / Stravifloor Batten Installation

Stravifloor Batten battens can be loose laid without the use of mechanical fixings or adhesive, if the supporting floor has a tolerance of 0.1% or a gradient of 1 mm/m.

Fasten the Stravifloor Batten battens to the structural floor with screws if the floor has an inclination (up to 50 degrees). The MDF strips on the outside of the Stravifloor Batten battens already contain 4 pre-drilled screw holes.

---

### 4 / Absorption Layer

Ensure that the thickness of the mineral wool is a few millimeters thinner than the depth of the void. It is worth remembering that the void will decrease once the floor is in use and fully loaded.

Install the mineral wool in between the Stravifloor Batten battens.

---

### 5 / First Board Layer

Loose lay the lost formwork (such as OSB, plywood or steel plate) perpendicular to the Stravifloor Batten battens and mechanically fix the two together. Make sure that the screw is not too long so that it cannot make contact with the supporting floor underneath.

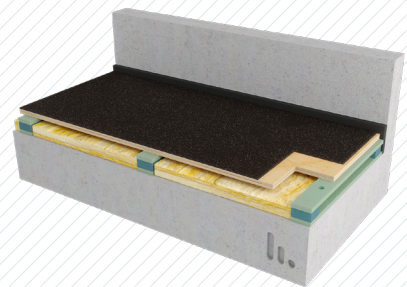
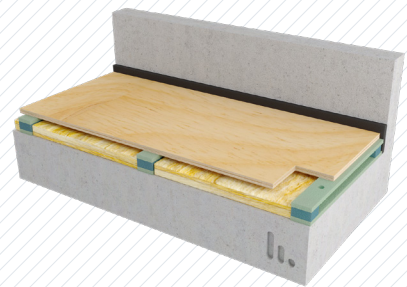
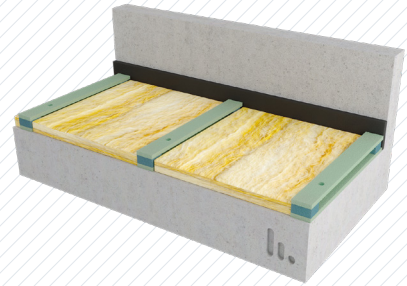
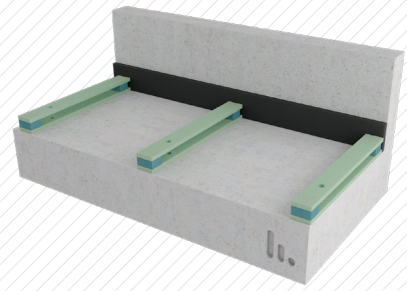
Take care to ensure that all board joints are located at the centre of a Stravifloor Batten batten so that the joint is supported.

---

### 6 / Damping Layer (optional)

Loose lay the Damping Layer sheet over the first board layer without any overlaps and ensure the entire floor is covered.

Stagger the Damping Layer sheets so that the joints are not located in the same place as the board joints underneath.



---

## 7 / Second Board Layer

Install the second board layer and stagger the boards so the joints are not located in the same place as the Stravifloor Batten joints underneath.

All layers must now be mechanically fixed together using screws which are short enough not to make contact with the supporting floor underneath. Use fixings at each corner (as a minimum) and two along the longest side (recommended).

---

## 8 / Floor Covering Trim & Caulk Perimeter

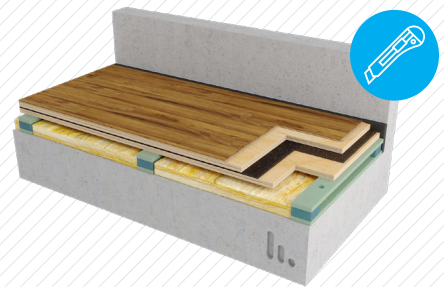
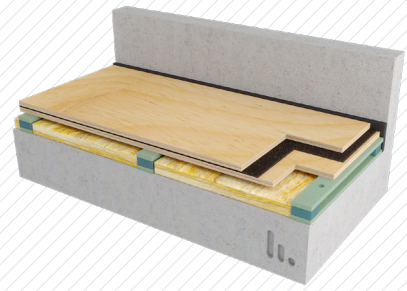
Install the final floor finish following the manufacturer's installation instructions.

Leave a small gap around the perimeter of the room to ensure that the final floor finish is not rigidly connected to the surrounding walls.

Trim any excess of the Perimeter Strip to the finished floor height. Seal with elastic caulking.



If the Stravifloor Batten floating floor system is a different height to the surrounding structure an edge profile will be required. If a rigid edge profile is used ensure that the height of it is less than the height of the total floor system so that it does not make contact with the supporting floor.



## DISCLAIMER

This information is accurate to the best of our knowledge at the time of issue. Information, data and recommendations provided are based on industry accepted testing and prior product usage. It is intended as descriptive of the general capabilities and performance of our products and does not endorse applicability for any particular project. We reserve the right to change products, performance, and data without notice. This document replaces all information supplied prior to the publication hereof.