

Notes

System **Stravifloor Jackup-R (EN)**

1. The structural floor should be clean, flat and leveled (F_25 as minimum - meaning a single $\frac{1}{4}$ " (6 mm) defect across 10-feet (3m). Subfloor shall be dry and clean of any debris (all dust, dirt, grease and foreign materials) before further installation.
2. A rigid connection should be avoided between the floating slab and all vertical elements (as walls, columns, ...) by adding a void or a layer of lateral isolation between the isolated slab and the vertical element.

For more detailed information ask for Stravifloor Jackup-R Installation Manual.

MINIMUM SYSTEM TOTAL BUILD-UP HEIGHT (BEFORE DEFLECTION): 4-3/8" (110MM)

Legend

First submission	2024/01/15	RTH	A
Revision Description	Date	Drawn	Rev.

Load table

Drawing based on



100 Sunrise Avenue, Unit 202
 Toronto, Ontario, M4A 1B3
 Canada
 PH: +1 905 265 7401
 info-ca@cdm-stravitec.com
 www.cdm-stravitec.com

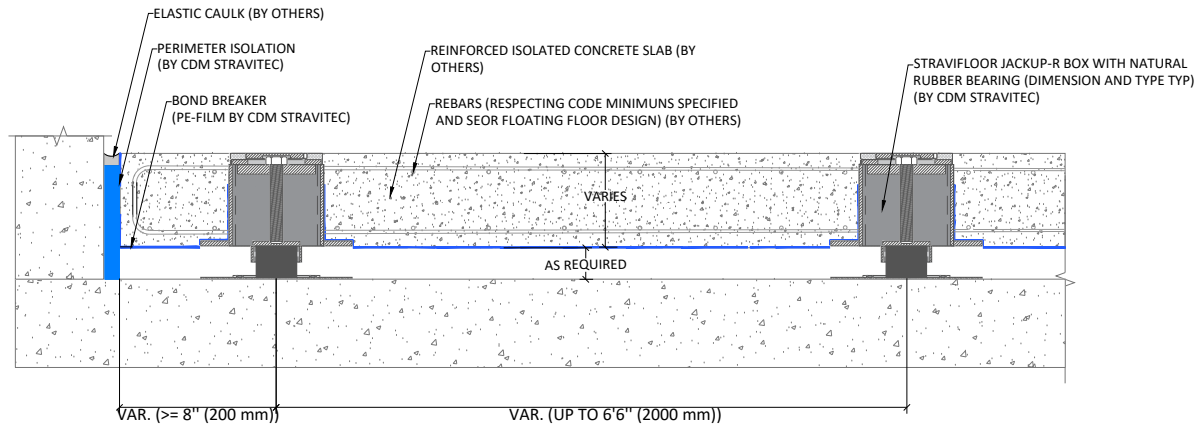
This drawing is exclusive property of CDM Stravitec, any reproduction or communication to third parties without prior authorisation is prohibited.

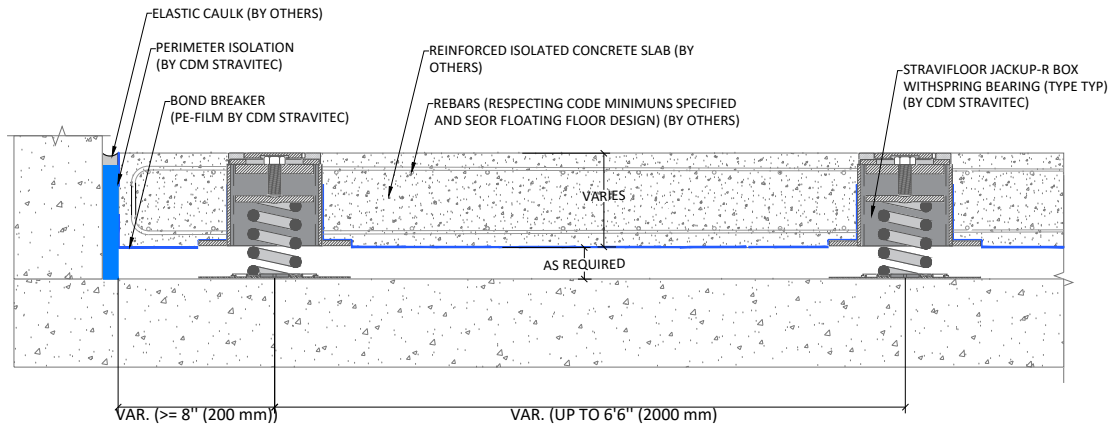
STRAVIFLOOR JACKUP-R WITH ELASTOMERIC BEARINGS

TYPICAL CROSS SECTION

Drawn: _____
 RTH 2024/01/15
 Design: _____
 MRO
 Check: _____
 MRO

Scale:
 1" = 1'
 Format:
 ANSI-A





Notes

System Stravifloor Jackup-R (EN)

1. The structural floor should be clean, flat and leveled (F₂₅ as minimum - meaning a single ¼" (6 mm) defect across 10-feet (3m). Subfloor shall be dry and clean of any debris (all dust, dirt, grease and foreign materials) before further installation.
2. A rigid connection should be avoided between the floating slab and all vertical elements (as walls, columns, ...) by adding a void or a layer of lateral isolation between the isolated slab and the vertical element.

For more detailed information ask for Stravifloor Jackup-R Installation Manual.

Minimum system total build-up height (before deflection): 4-3/16" (105mm)

Legend

First submission	2024/01/15	RTH	A
Revision Description	Date	Drawn	Rev.

Load table

Drawing based on



100 Sunrise Avenue, Unit 202
 Toronto, Ontario, M4A 1B3
 Canada
 PH: +1 905 265 7401
 info-ca@cdm-stravitec.com
 www.cdm-stravitec.com

This drawing is exclusive property of CDM Stravitec, any reproduction or communication to third parties without prior authorisation is prohibited.

STRAVIFLOOR JACKUP-R WITH SPRINGS

Typical Cross Section

Drawn: RTH 2024/01/15
 Design: MRO
 Check: MRO

Scale:
 1" = 1'
 Format:
 ANSI-A

Notes

System **Stravifloor Jackup-R (EN)**

1. The structural floor should be clean, flat and leveled (F₂₅ as minimum - meaning a single ¼" (6 mm) defect across 10-feet (3m). Subfloor shall be dry and clean of any debris (all dust, dirt, grease and foreign materials) before further installation.
2. A rigid connection should be avoided between the floating slab and all vertical elements (as walls, columns, ...) by adding a void or a layer of lateral isolation between the isolated slab and the vertical element.

For more detailed information ask for Stravifloor Jackup-R Installation Manual.

MINIMUM SYSTEM TOTAL BUILD-UP HEIGHT (BEFORE DEFLECTION): 4-3/8" (110MM) + INSULATION MATERIAL THICKNESS

Legend

First submission	2024/01/15	RTH	A
Revision Description	Date	Drawn	Rev.

Load table

Drawing based on



100 Sunrise Avenue, Unit 202
 Toronto, Ontario, M4A 1B3
 Canada
 PH: +1 905 265 7401
 info-ca@cdm-stravitec.com
 www.cdm-stravitec.com

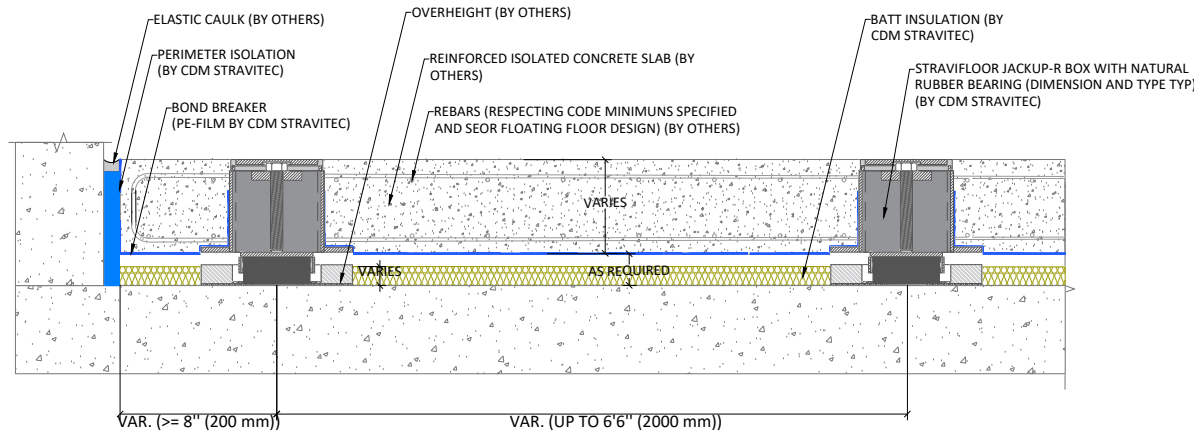
This drawing is exclusive property of CDM Stravitec, any reproduction or communication to third parties without prior authorisation is prohibited.

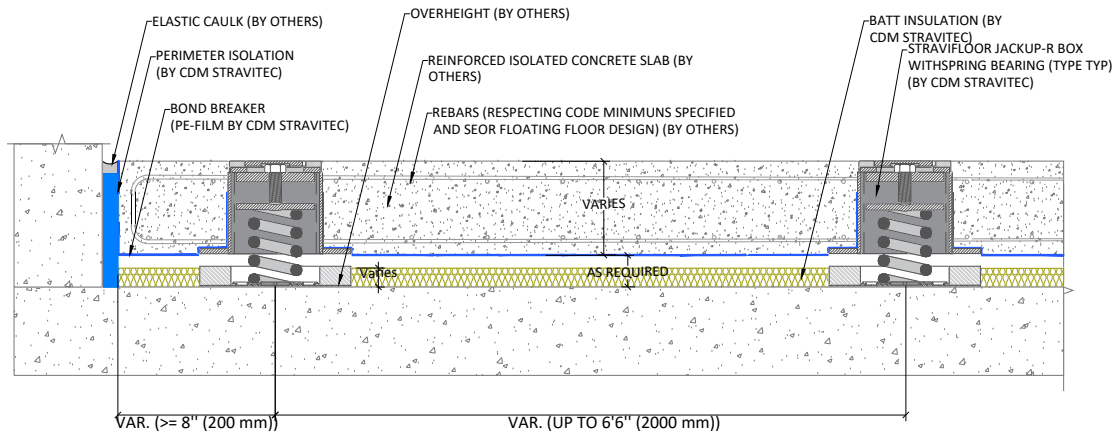
STRAVIFLOOR JACKUP-R WITH ELASTOMERIC BEARINGS, FRAME OVERHEIGHT AND INSULATION MATERIAL

Typical Cross Section

Drawn: _____
 RTH 2024/01/15
 Design: _____
 MRO
 Check: _____
 MRO

Scale:
 1" = 1'
 Format:
 ANSI-A





Notes

System Stravifloor Jackup-R (EN)

1. The structural floor should be clean, flat and leveled (F₂₅ as minimum - meaning a single 1/8" (6 mm) defect across 10-feet (3m). Subfloor shall be dry and clean of any debris (all dust, dirt, grease and foreign materials) before further installation.
2. A rigid connection should be avoided between the floating slab and all vertical elements (as walls, columns, ...) by adding a void or a layer of lateral isolation between the isolated slab and the vertical element.

For more detailed information ask for Stravifloor Jackup-R Installation Manual.

MINIMUM SYSTEM TOTAL BUILD-UP HEIGHT (BEFORE DEFLECTION): 4-3/16" (105MM) + INSULATION MATERIAL THICKNESS

Legend

First submission	2024/01/15	RTH	A
Revision Description	Date	Drawn	Rev.

Load table

Drawing based on



100 Sunrise Avenue, Unit 202
 Toronto, Ontario, M4A 1B3
 Canada
 PH: +1 905 265 7401
 info-ca@cdm-stravitec.com
 www.cdm-stravitec.com

This drawing is exclusive property of CDM Stravitec, any reproduction or communication to third parties without prior authorisation is prohibited.

STRAVIFLOOR JACKUP-R WITH SPRING BEARINGS, FRAME OVERHEIGHT AND INSULATION MATERIAL

Typical Cross Section

Drawn: RTH 2024/01/15
 Design: MRO
 Check: MRO

Scale: 1" = 1'
 Format: ANSI-A