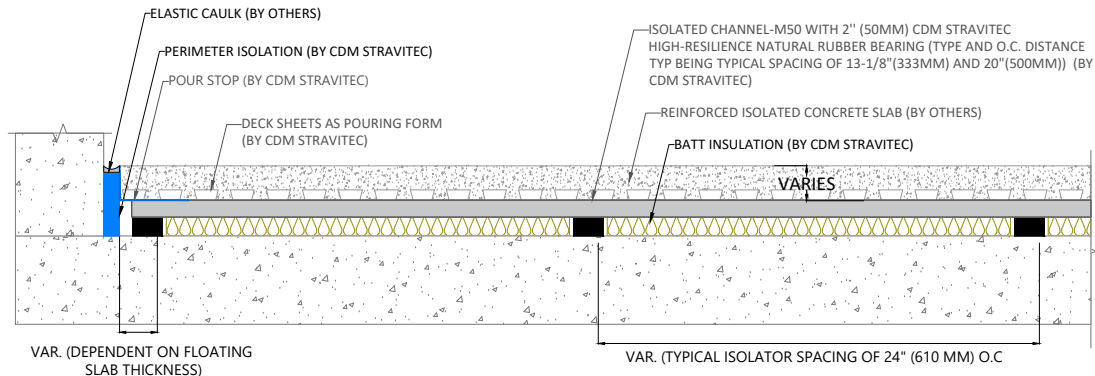


LATERAL SECTION



LONGITUDINAL SECTION

Notes

System Stravifloor Deck (EN)

1. Stravifloor Deck systems require a flat and level structural floor to be specified. All Stravifloor Decks are a fixed height, so the contour of the structural floor controls the flatness and levelness of the finished floated slab. (Note to Specifier: F_{-25} as minimum - meaning a single $\frac{1}{4}$ " deflect across 10-feet.)

2. A rigid connection should be avoided between the floating slab and all vertical elements (as walls, columns, ...) by adding a void or a layer of lateral isolation between the isolated slab and the vertical element.

For more detailed information ask for Stravifloor Deck Installation Manual.

MINIMUM SYSTEM TOTAL BUILD-UP HEIGHT (BEFORE DEFLATION): 4" (106 MM)

First submission	2024/12/17	RTH	A
Revision Description	Date	Drawn	Rev.



100 Sunrise Avenue, Unit 202
 Toronto, Ontario, M4A 1B3
 Canada
 PH: +1 905 265 7401
 info-ca@cdm-stravitec.com
 www.cdm-stravitec.com

This drawing is exclusive property of CDM Stravitec, any reproduction or communication to third parties without prior authorisation is prohibited.

STRAVIFLOOR DECK W/ 2" (50MM) ELASTOMERIC PADS

TYPICAL CROSS SECTION

Drawn: _____
 RTH 2024/12/17
 Design: _____
 CRU
 Check: _____
 CRU

Scale:
 1" = 1'
 Format:
 ANSI-A

Notes

System Stravifloor Deck (EN)

1. Stravifloor Deck systems require a flat and level structural floor to be specified. All Stravifloor Decks are a fixed height, so the contour of the structural floor controls the flatness and levelness of the finished floated slab. (Note to Specifier: F_{-25} as minimum - meaning a single $\frac{1}{4}$ " defect across 10-feet.)
2. A rigid connection should be avoided between the floating slab and all vertical elements (as walls, columns, ...) by adding a void or a layer of lateral isolation between the isolated slab and the vertical element.

For more detailed information ask for Stravifloor Deck Installation Manual.

MINIMUM SYSTEM TOTAL BUILD-UP HEIGHT (BEFORE DEFLECTION): 4-3/4" (120 MM)

First submission	2024/12/17	RTH	A
Revision Description	Date	Drawn	Rev.



100 Sunrise Avenue, Unit 202
 Toronto, Ontario, M4A 1B3
 Canada
 PH: +1 905 265 7401
 info-ca@cdm-stravitec.com
 www.cdm-stravitec.com

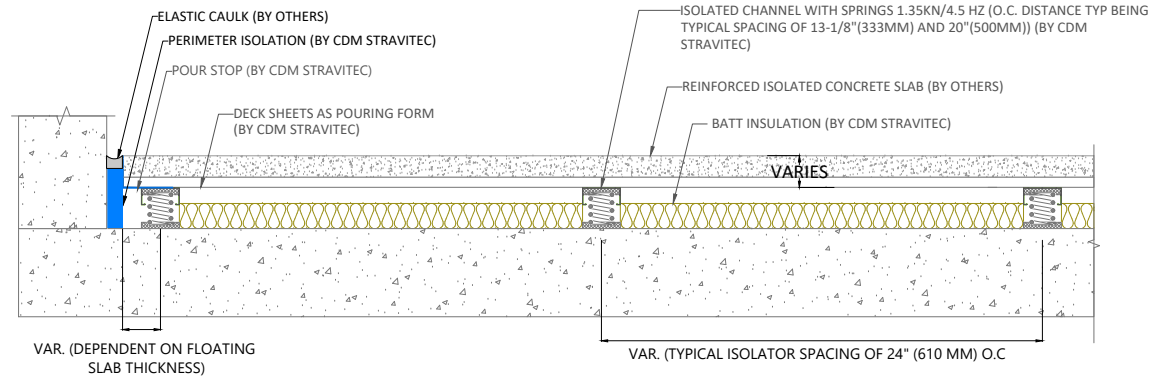
This drawing is exclusive property of CDM Stravitec, any reproduction or communication to third parties without prior authorisation is prohibited.

STRAVIFLOOR DECK W/ 1.35KN/4.5HZ SPRINGS

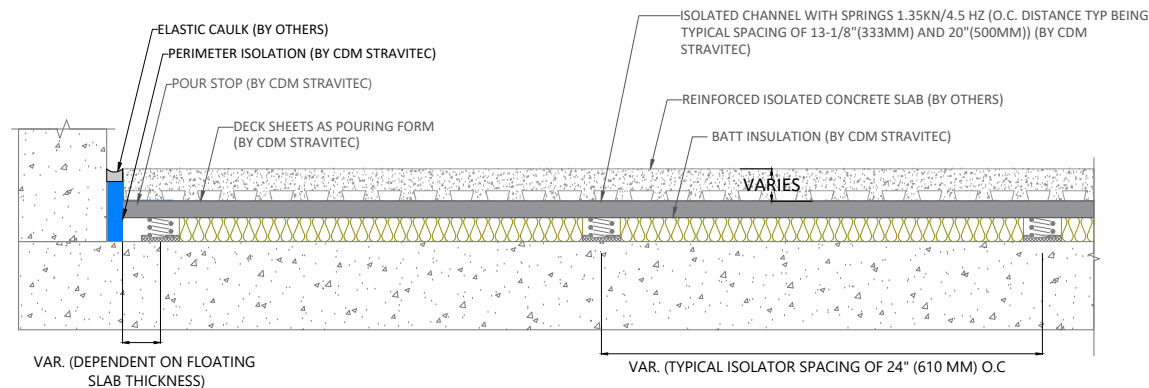
TYPICAL CROSS SECTION

Drawn: _____
 RTH 2024/12/17
 Design: _____
 CRU
 Check: _____
 CRU

Scale: _____
 N.T.S
 Format: _____
 ANSI-A



LATERAL SECTION



LONGITUDINAL SECTION

Notes

System Stravifloor Deck (EN)

1. Stravifloor Deck systems require a flat and level structural floor to be specified. All Stravifloor Decks are a fixed height, so the contour of the structural floor controls the flatness and levelness of the finished floated slab. (Note to Specifier: $F_{\underline{25}}$ as minimum - meaning a single $\frac{1}{4}$ " defect across 10-feet.)
2. A rigid connection should be avoided between the floating slab and all vertical elements (as walls, columns, ...) by adding a void or a layer of lateral isolation between the isolated slab and the vertical element.

For more detailed information ask for Stravifloor Deck Installation Manual.

MINIMUM SYSTEM TOTAL BUILD-UP HEIGHT (BEFORE DEFLECTION): 3-3/8" (86 MM)

First submission	2024/12/17	RTH	A
Revision Description	Date	Drawn	Rev.



100 Sunrise Avenue, Unit 202
 Toronto, Ontario, M4A 1B3
 Canada
 PH: +1 905 265 7401
 info-ca@cdm-stravitec.com
 www.cdm-stravitec.com

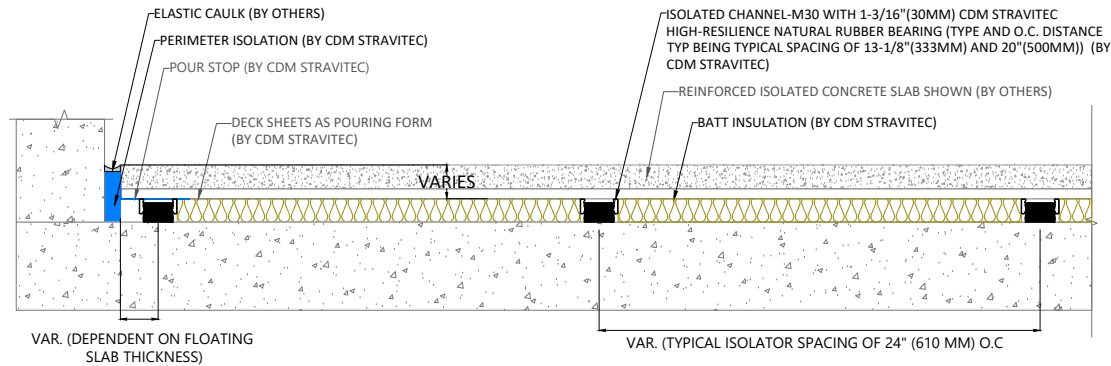
This drawing is exclusive property of CDM Stravitec, any reproduction or communication to third parties without prior authorisation is prohibited.

STRAVIFLOOR DECK W/ 30MM ELASTOMERIC PADS

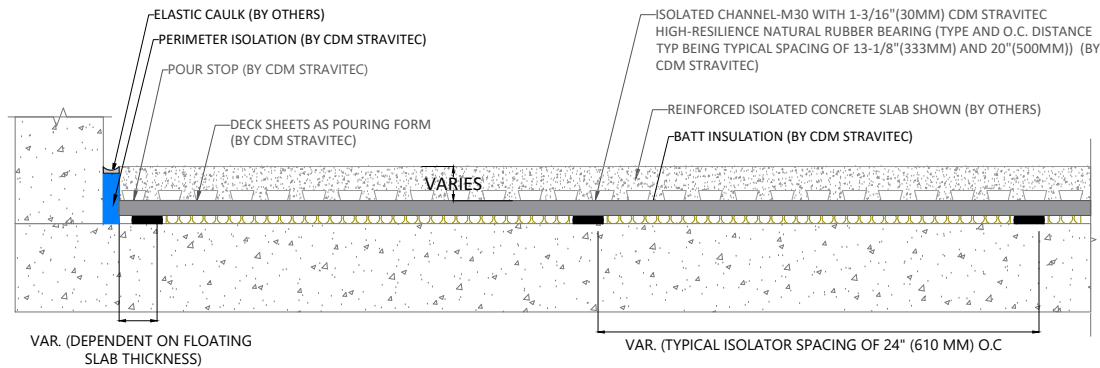
TYPICAL CROSS SECTION

Drawn: _____
 RTH 2024/12/17
 Design: _____
 CRU
 Check: _____
 CRU

Scale:
 1" = 1'
 Format:
 ANSI-A



LATERAL SECTION



LONGITUDINAL SECTION