

Notes	
System	Stravigym (EN)
<div>1. The structural floor should comply with the required tolerances regarding gradient (0,1 % or 1 mm/m) and smoothness (max. 2 mm). It should be dry and free of obstacles, discontinuities, dust, etc.</div> <div>2. A rigid connection should be avoided between the floating slab and all vertical elements (as walls, columns, ...) by adding a void or a layer of lateral isolation between the isolated slab and the vertical element.</div> <div>3. The Stravigym solution is suitable for applications that experience a defined maximum impact energy. For more detailed information refer to the related Stravigym solution datasheet.</div>	
The Stravigym solution is suitable for applications that experience a defined maximum impact energy. For more detailed information refer to the related Stravigym solution datasheet.	
MINIMUM SYSTEM TOTAL BUILD-UP HEIGHT (BEFORE DEFECTION): 68mm	

Legend

First submission	2025/11/17	VPR	A
Revision Description	Date	Drawn	Rev.

Load table

Drawing based on



100 Sunrise Avenue, Unit 202
Toronto, Ontario, M4A 1B3
Canada
PH: +1 905 265 7401
info-ca@cdm-stravitec.com
www.cdm-stravitec.com

This drawing is exclusive property of CDM Stravitec, any reproduction or communication to third parties without prior authorisation is prohibited.

STRAVIGYM SP

Typical sections_Stravigym SP

(US-CA)-01

VPR2025/11/17

Scale:

1 : 3

Format:

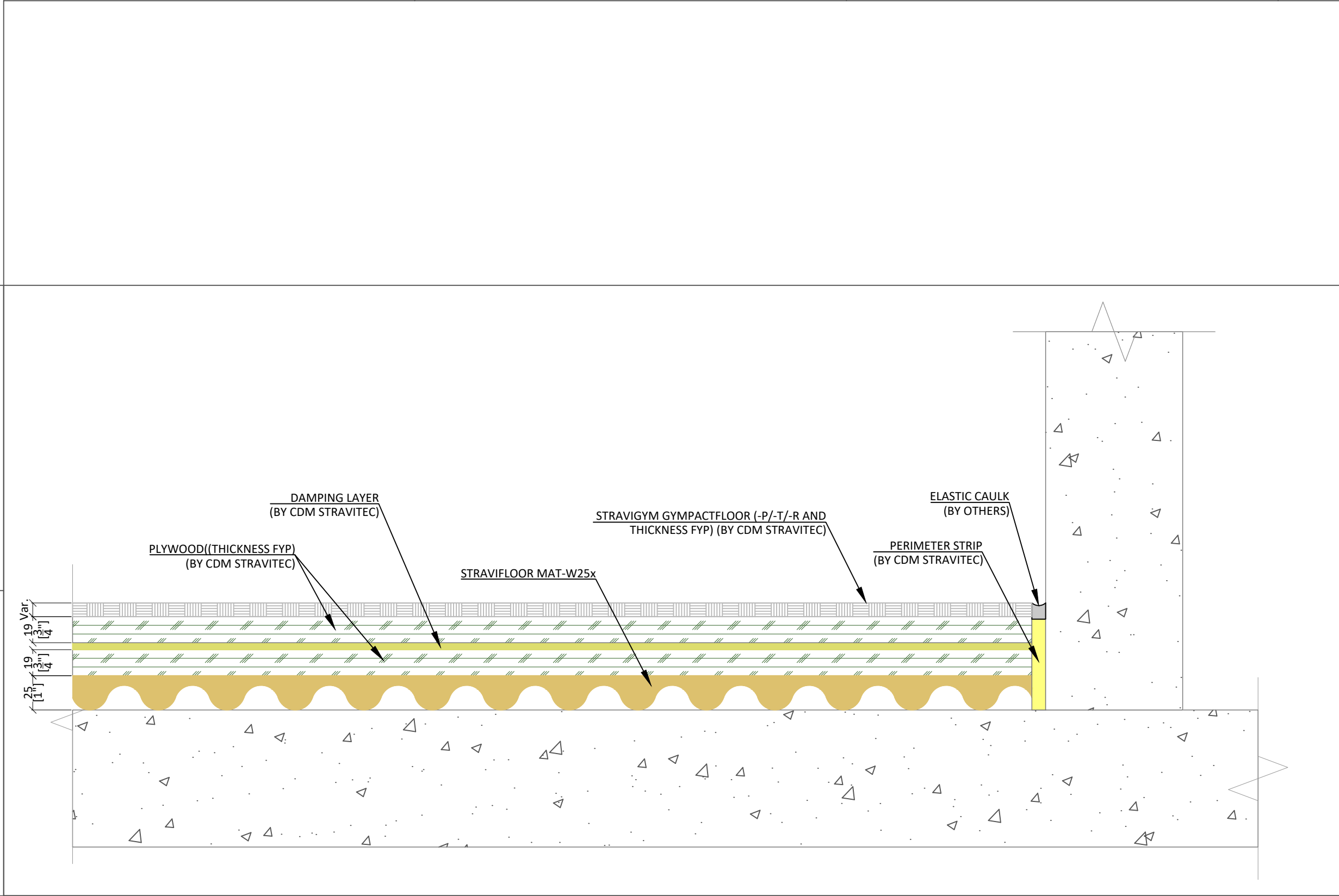
A3

Design:

Check:

BHU

Page 01 of 1



Notes

System Stravigym (EN)

1. The structural floor should comply with the required tolerances regarding gradient (0,1 % or 1 mm/m) and smoothness (max. 2 mm). It should be dry and free of obstacles, discontinuities, dust, etc.

2. A rigid connection should be avoided between the floating slab and all vertical elements (as walls, columns, ...) by adding a void or a layer of lateral isolation between the isolated slab and the vertical element.

3. The Stravigym solution is suitable for applications that experience a defined maximum impact energy. For more detailed information refer to the related Stravigym solution datasheet.

The Stravigym solution is suitable for applications that experience a defined maximum impact energy. For more detailed information refer to the related Stravigym solution datasheet.

MINIMUM SYSTEM TOTAL BUILD-UP HEIGHT (BEFORE DEFLECTION): 78mm

Legend

First submission	2025/11/17	VPR	A
Revision Description	Date	Drawn	Rev.

Load table

Drawing based on



100 Sunrise Avenue, Unit 202
Toronto, Ontario, M4A 1B3
Canada
PH: +1 905 265 7401
info-ca@cdm-stravitec.com
www.cdm-stravitec.com

This drawing is exclusive property of CDM Stravitec, any reproduction or communication to third parties without prior authorisation is prohibited.

STRAVIGYM SP WITH GYMPACTFLOOR

Typical sections_Stravigym SP

(US-CA)-02

VPR 2025/11/17


Design: _____

Check: _____

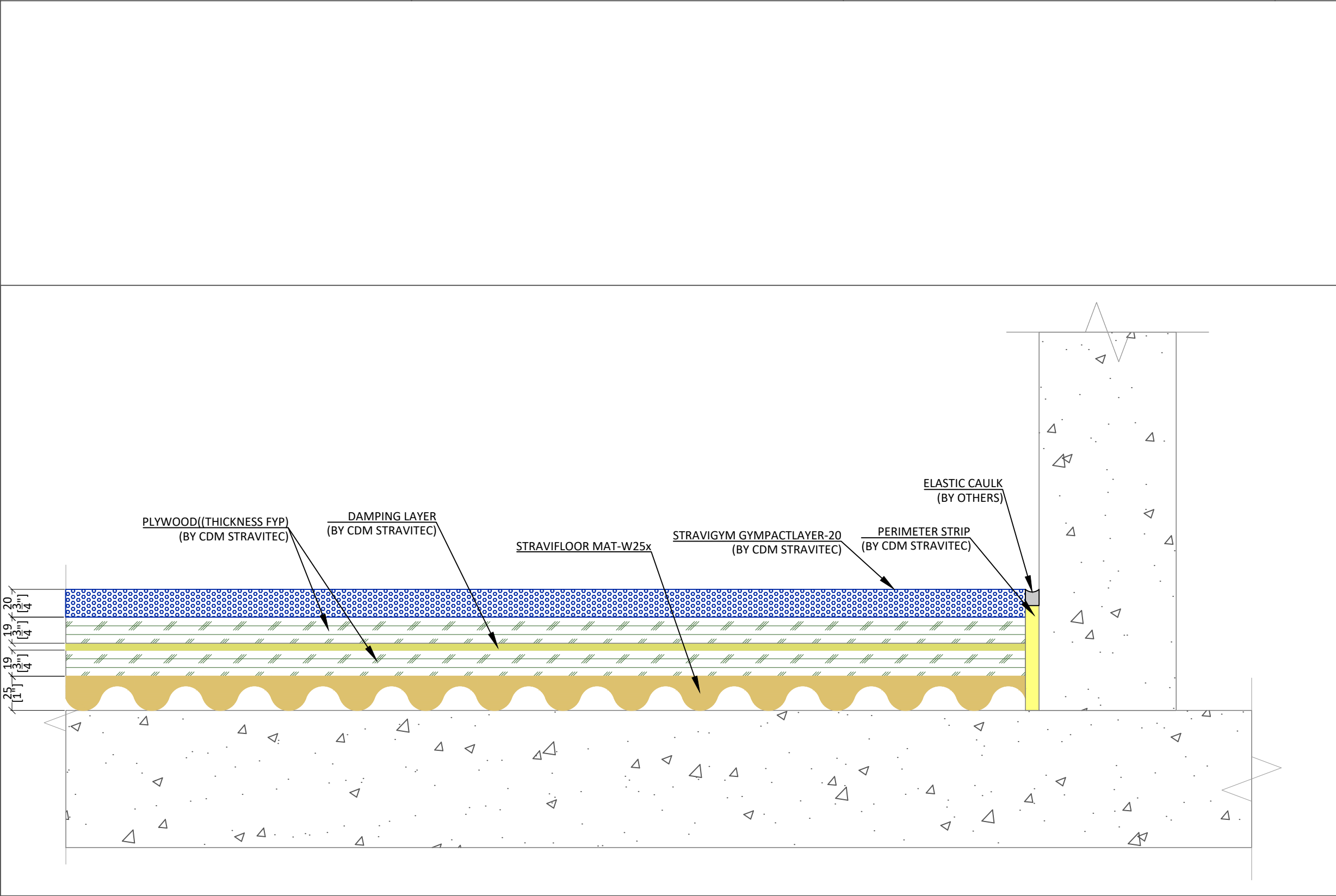
BHU

Scale: 1 : 3

Format: A3



Page 02 of 1



Notes

System Stravigym (EN)

1. The structural floor should comply with the required tolerances regarding gradient (0,1 % or 1 mm/m) and smoothness (max. 2 mm). It should be dry and free of obstacles, discontinuities, dust, etc.

2. A rigid connection should be avoided between the floating slab and all vertical elements (as walls, columns, ...) by adding a void or a layer of lateral isolation between the isolated slab and the vertical element.

3. The Stravigym solution is suitable for applications that experience a defined maximum impact energy. For more detailed information refer to the related Stravigym solution datasheet.

The Stravigym solution is suitable for applications that experience a defined maximum impact energy. For more detailed information refer to the related Stravigym solution datasheet.

MINIMUM SYSTEM TOTAL BUILD-UP HEIGHT (BEFORE DEFLECTION): 88mm

Legend

First submission	2025/11/17	VPR	A
Revision Description	Date	Drawn	Rev.

Load table

Drawing based on



100 Sunrise Avenue, Unit 202
Toronto, Ontario, M4A 1B3
Canada
PH: +1 905 265 7401
info-ca@cdm-stravitec.com
www.cdm-stravitec.com

This drawing is exclusive property of CDM Stravitec, any reproduction or communication to third parties without prior authorisation is prohibited.

STRAVIGYM SP W/ GYMPACTLAYER-20

Typical sections_Stravigym SP

(US-CA)-03

VPR 2025/11/17

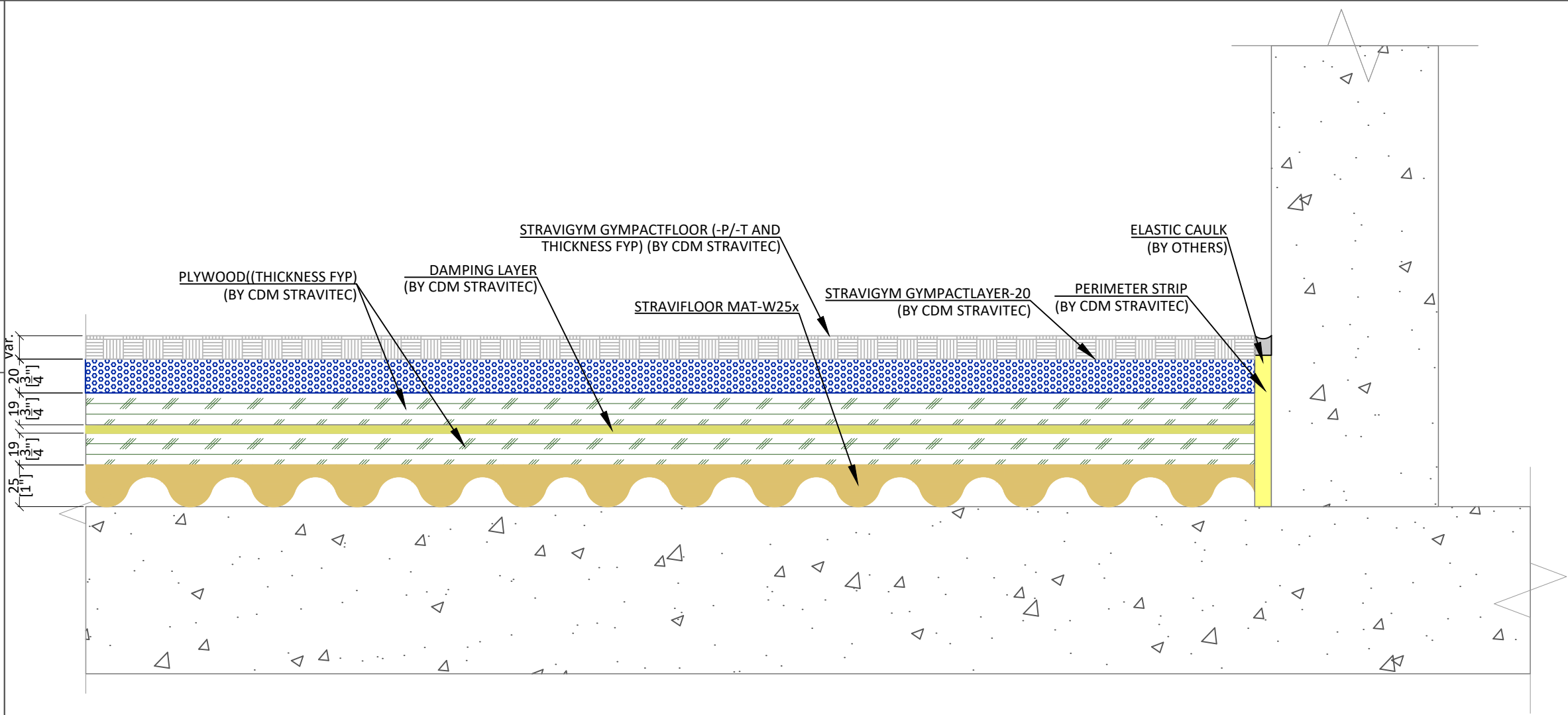
Design: _____

Check: _____

BHU

Scale: 1 : 3

Format: A3



Notes

System Stravigym (EN)

1. The structural floor should comply with the required tolerances regarding gradient (0,1 % or 1 mm/m) and smoothness (max. 2 mm). It should be dry and free of obstacles, discontinuities, dust, etc.

2. A rigid connection should be avoided between the floating slab and all vertical elements (as walls, columns, ...) by adding a void or a layer of lateral isolation between the isolated slab and the vertical element.

3. The Stravigym solution is suitable for applications that experience a defined maximum impact energy. For more detailed information refer to the related Stravigym solution datasheet.

The Stravigym solution is suitable for applications that experience a defined maximum impact energy. For more detailed information refer to the related Stravigym solution datasheet.

MINIMUM SYSTEM TOTAL BUILD-UP HEIGHT (BEFORE DEFLECTION): 98mm

Legend

First submission	2025/11/17	VPR	A
Revision Description	Date	Drawn	Rev.

Load table

Drawing based on



100 Sunrise Avenue, Unit 202
Toronto, Ontario, M4A 1B3
Canada
PH: +1 905 265 7401
info-ca@cdm-stravitec.com
www.cdm-stravitec.com

This drawing is exclusive property of CDM Stravitec, any reproduction or communication to third parties without prior authorisation is prohibited.

STRAVIGYM SP W/ GYMPACTLAYER-20 & GYMPACTFLOOR

Typical sections_Stravigym SP

(US-CA)-04

VPR 2025/11/17

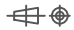
Design: _____

Check: _____

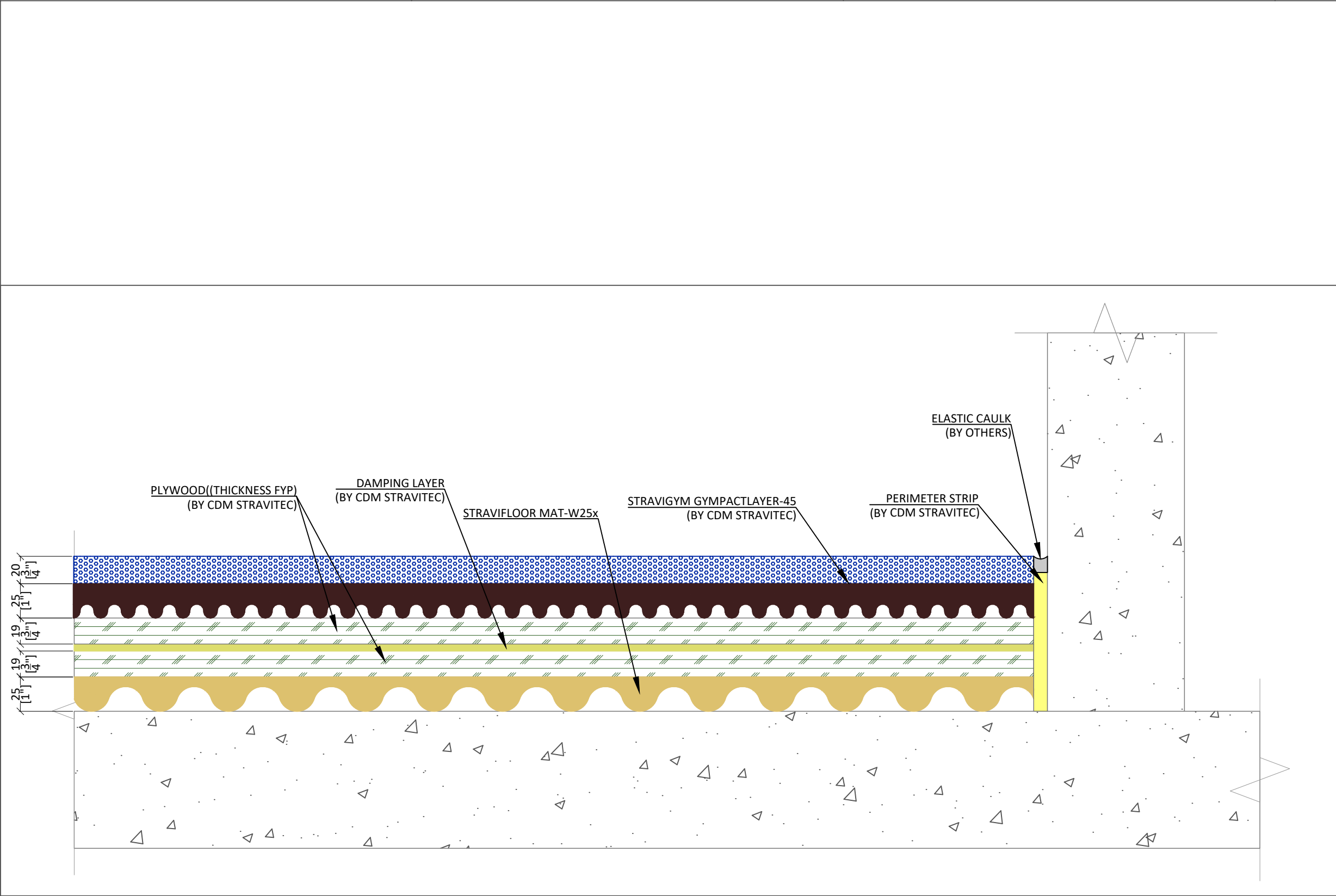
BHU

Scale: 1 : 3

Format: A3



Page 04 of 1



Notes

System Stravigym (EN)

1. The structural floor should comply with the required tolerances regarding gradient (0,1 % or 1 mm/m) and smoothness (max. 2 mm). It should be dry and free of obstacles, discontinuities, dust, etc.

2. A rigid connection should be avoided between the floating slab and all vertical elements (as walls, columns, ...) by adding a void or a layer of lateral isolation between the isolated slab and the vertical element.

3. The Stravigym solution is suitable for applications that experience a defined maximum impact energy. For more detailed information refer to the related Stravigym solution datasheet.

The Stravigym solution is suitable for applications that experience a defined maximum impact energy. For more detailed information refer to the related Stravigym solution datasheet.

MINIMUM SYSTEM TOTAL BUILD-UP HEIGHT (BEFORE DEFLECTION): 113mm

Legend

First submission	2025/11/17	VPR	A
Revision Description	Date	Drawn	Rev.

Load table

Drawing based on



100 Sunrise Avenue, Unit 202
Toronto, Ontario, M4A 1B3
Canada
PH: +1 905 265 7401
info-ca@cdm-stravitec.com
www.cdm-stravitec.com

This drawing is exclusive property of CDM Stravitec, any reproduction or communication to third parties without prior authorisation is prohibited.

STRAVIGYM SP W/ GYMPACTLAYER-45

Typical sections_Stravigym SP

(US-CA)-05

VPR 2025/11/17

Design:

Check:

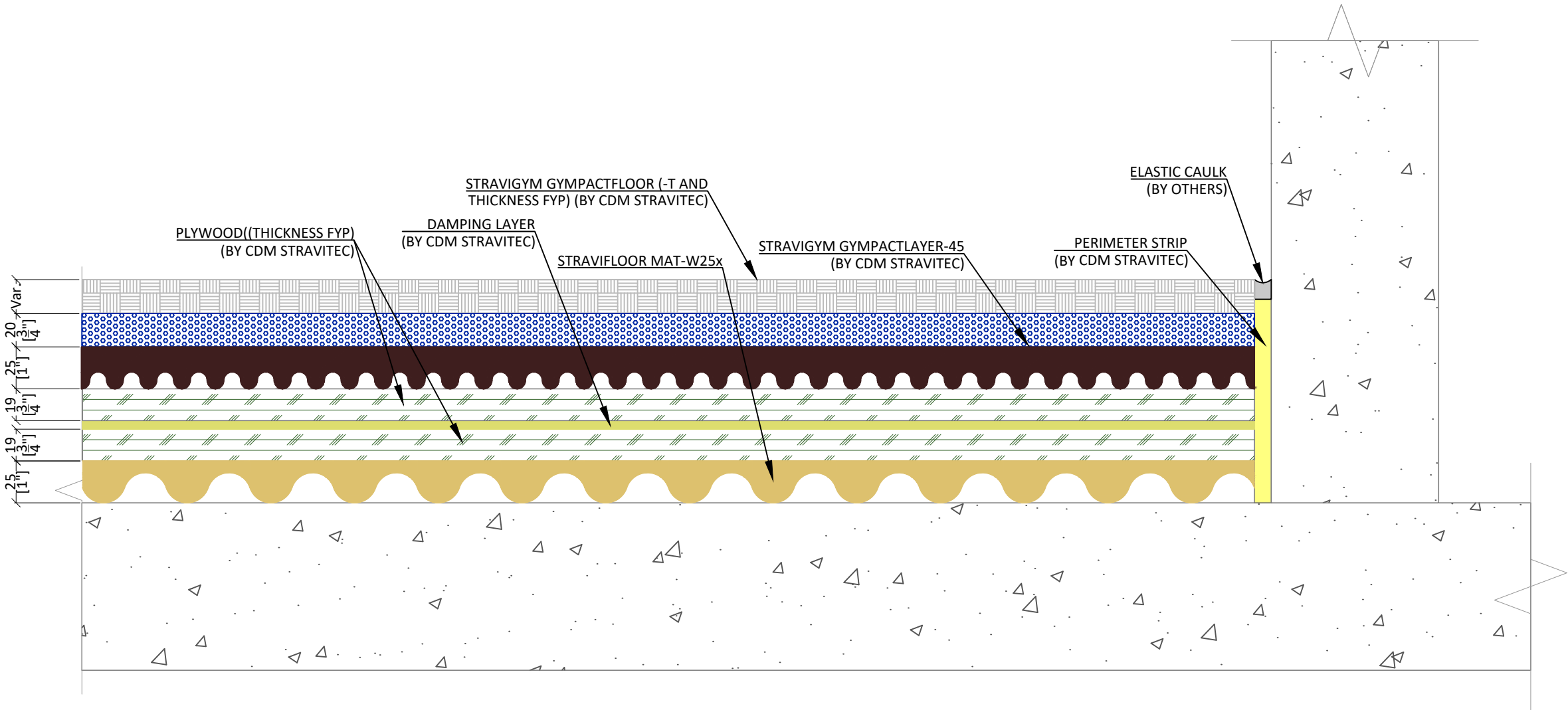
BHU

Scale:

1 : 3

Format:

A3



Notes

System Stravigym (EN)

1. The structural floor should comply with the required tolerances regarding gradient (0,1 % or 1 mm/m) and smoothness (max. 2 mm). It should be dry and free of obstacles, discontinuities, dust, etc.

2. A rigid connection should be avoided between the floating slab and all vertical elements (as walls, columns, ...) by adding a void or a layer of lateral isolation between the isolated slab and the vertical element.

3. The Stravigym solution is suitable for applications that experience a defined maximum impact energy. For more detailed information refer to the related Stravigym solution datasheet.

The Stravigym solution is suitable for applications that experience a defined maximum impact energy. For more detailed information refer to the related Stravigym solution datasheet.

MINIMUM SYSTEM TOTAL BUILD-UP HEIGHT (BEFORE DEFLECTION): 133mm

Legend

First submission	2025/11/17	VPR	A
Revision Description	Date	Drawn	Rev.

Load table

Drawing based on



100 Sunrise Avenue, Unit 202
Toronto, Ontario, M4A 1B3
Canada
PH: +1 905 265 7401
info-ca@cdm-stravitec.com
www.cdm-stravitec.com

This drawing is exclusive property of CDM Stravitec, any reproduction or communication to third parties without prior authorisation is prohibited.

STRAVIGYM SP W/ GYMPACTLAYER-45 & GYMPACTFLOOR

Typical sections_Stravigym SP

(US-CA)-06

VPR 2025/11/17


Design: _____

Check: _____

BHU

Scale: 1 : 3

Format: A3



Page 06 of 1