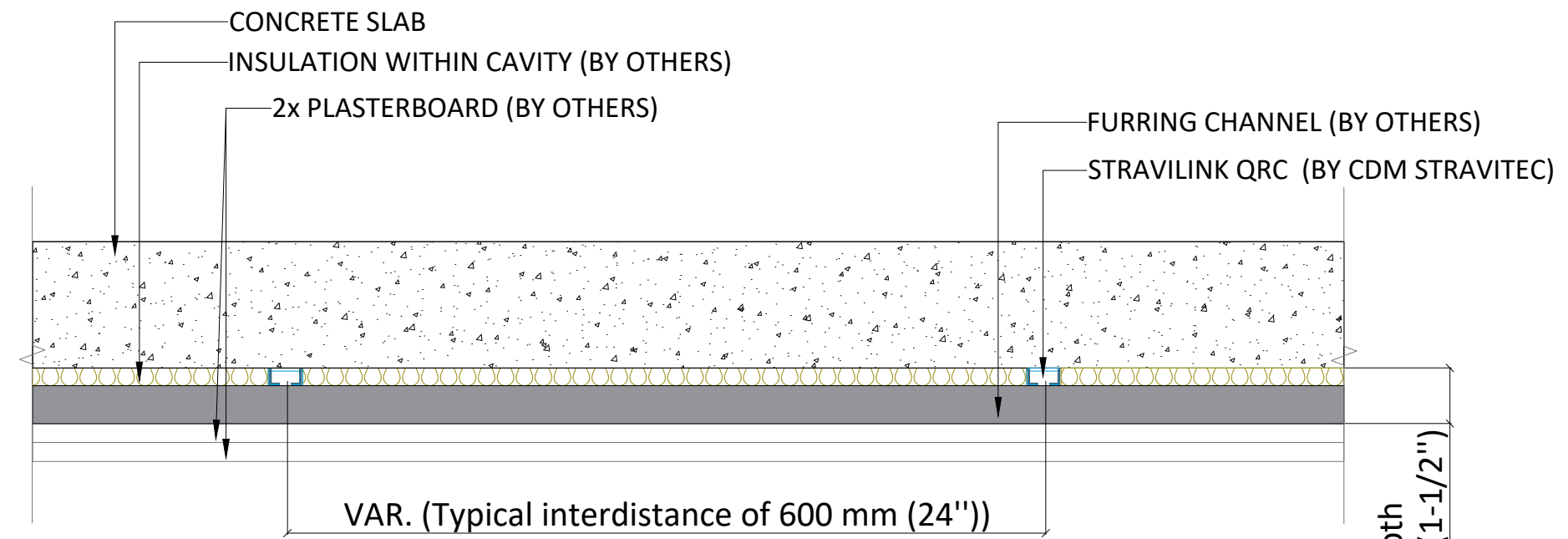


Void depth
from 38 mm (1-1/2")



Void depth
from 38 mm (1-1/2")

Notes

Legend

Revision	Description	Date	Drawn	Rev.
0302/2025	ERA	A		

Load table

Drawing based on

cdm
stravitec

342 N. Queen St., Warehouse D
Lancaster, PA 17603
United States
PH:+1 (888) 454-6236
info-us@cdm-stravitec.com
www.cdm-stravitec.com

This drawing is exclusive property of CDM Stravitec, any reproduction or communication to third parties without prior authorisation is prohibited.

Stravilink QRC on Ceiling Setup (Concrete Slab)

Typical Cross Section - Stravilink QRC (US-CA)-01

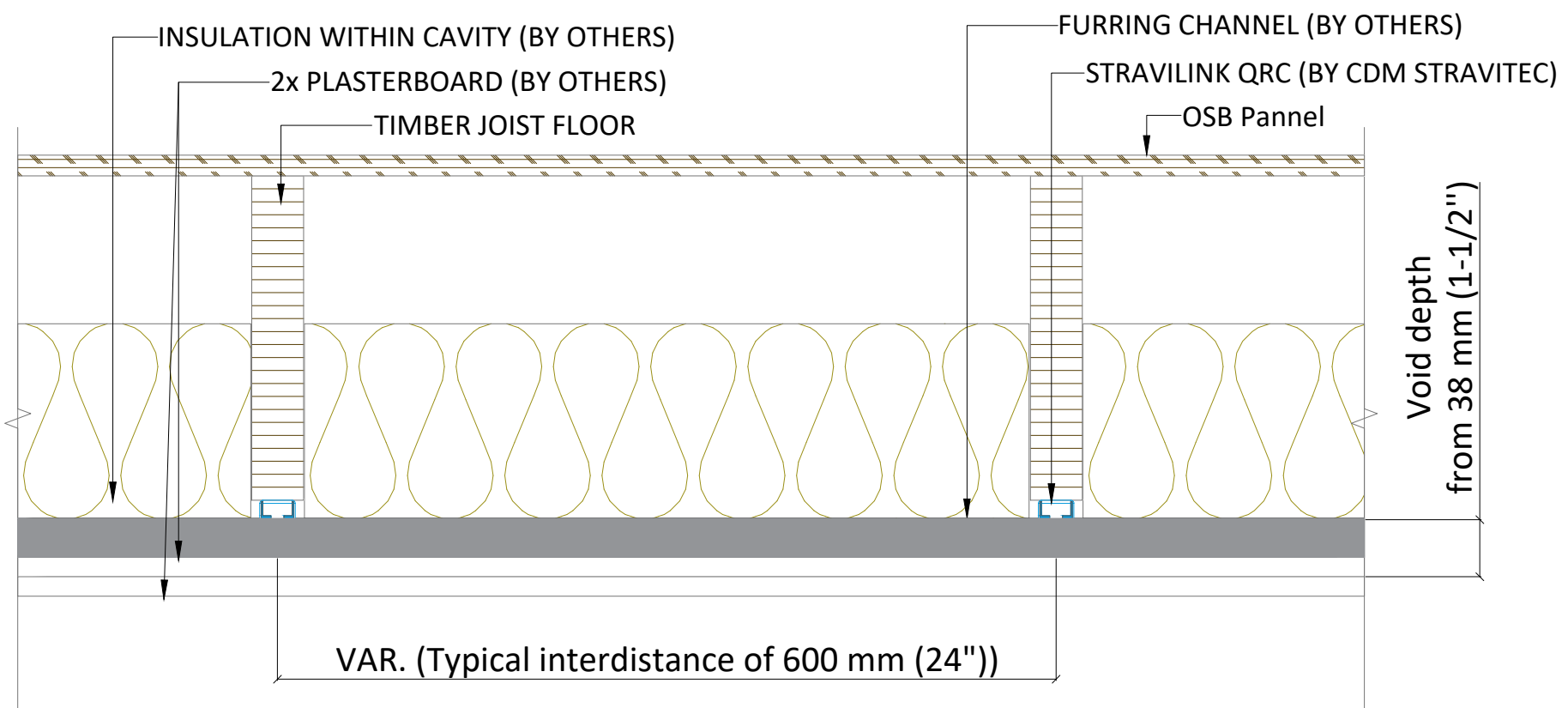
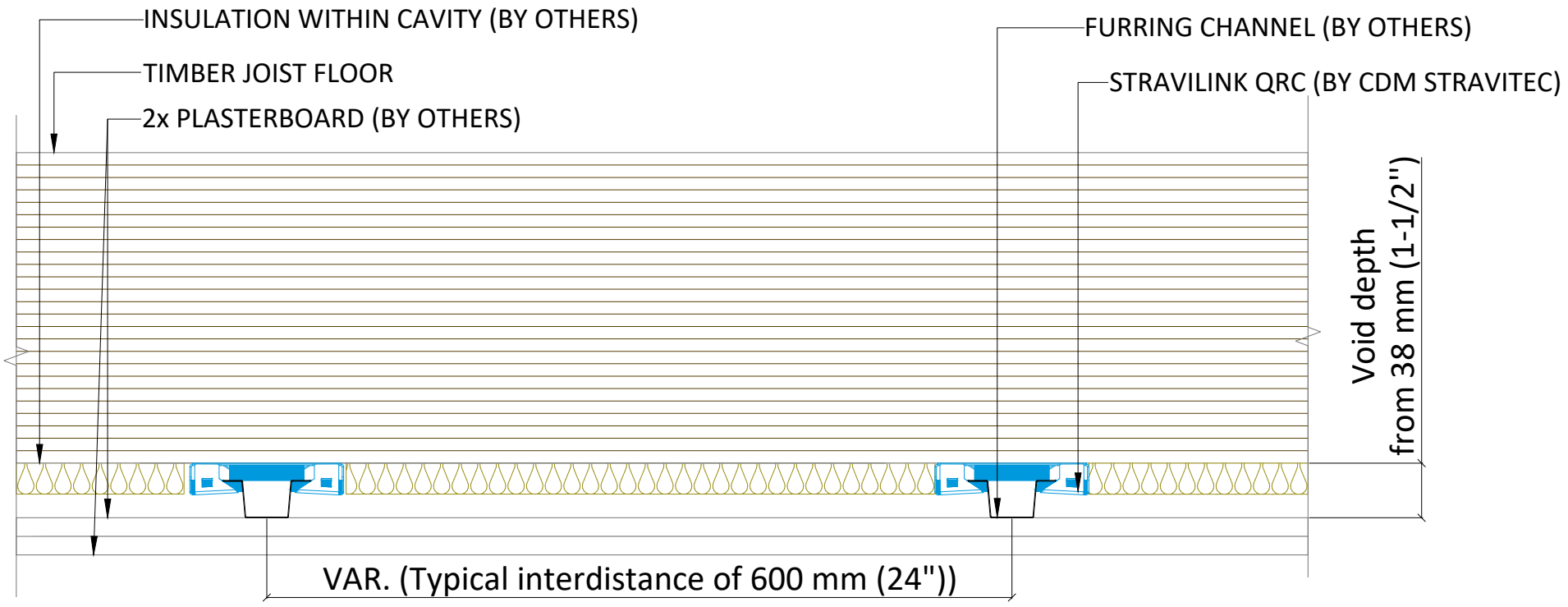
Drawn: ERA 0302/2025

Design: MRO

Check: MRO

Scale: 2 51/128" = 1'

Format: ANSI-B



Notes

Legend

First submission	0302/2025	ERA	A
Revision Description	Date	Drawn	Rev.

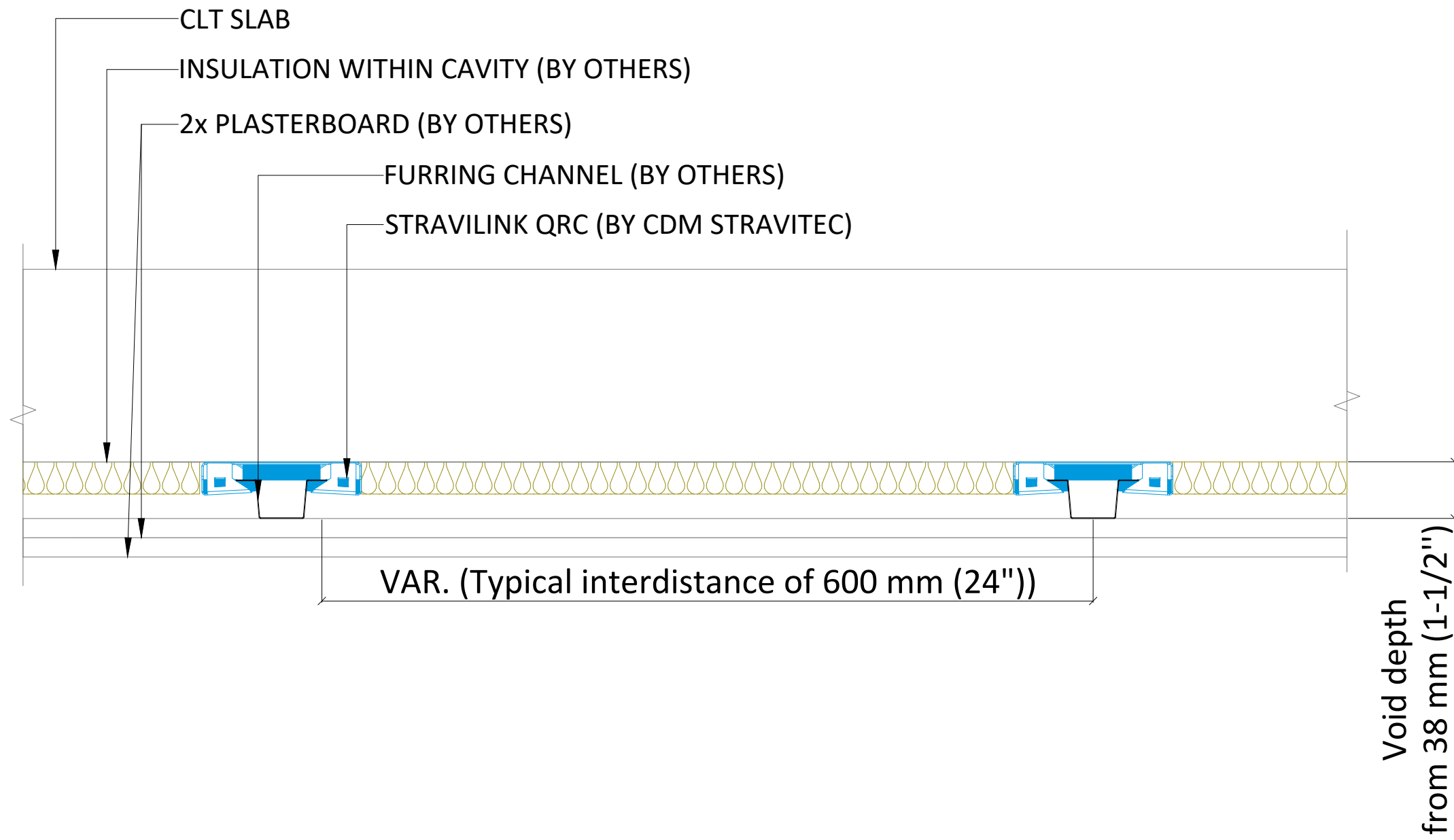
Load table

Drawing based on

342 N. Queen St., Warehouse D
Lancaster, PA 17603
United States
PH:+1 (888) 454-6236
info-us@cdm-stravitec.com
www.cdm-stravitec.com

Stravilink QRC on Ceiling Setup (Timber Joist)

Typical Cross Section - Stravilink QRC (US-CA)-02
Scale: 2 51/128" = 1'
Format: ANSI-B
Drawn: ERA 0302/2025
Design: MRO
Check: MRO



Notes

Legend

First submission	0302/2025	ERA	A
Revision Description	Date	Drawn	Rev.

Load table

Drawing based on

342 N. Queen St., Warehouse D
Lancaster, PA 17603
United States
PH:+1 (888) 454-6236
info-us@cdm-stravitec.com
www.cdm-stravitec.com

Stravilink QRC on Ceiling Setup (CLT)

Typical Cross Section - Stravilink QRC (US-CA)-03

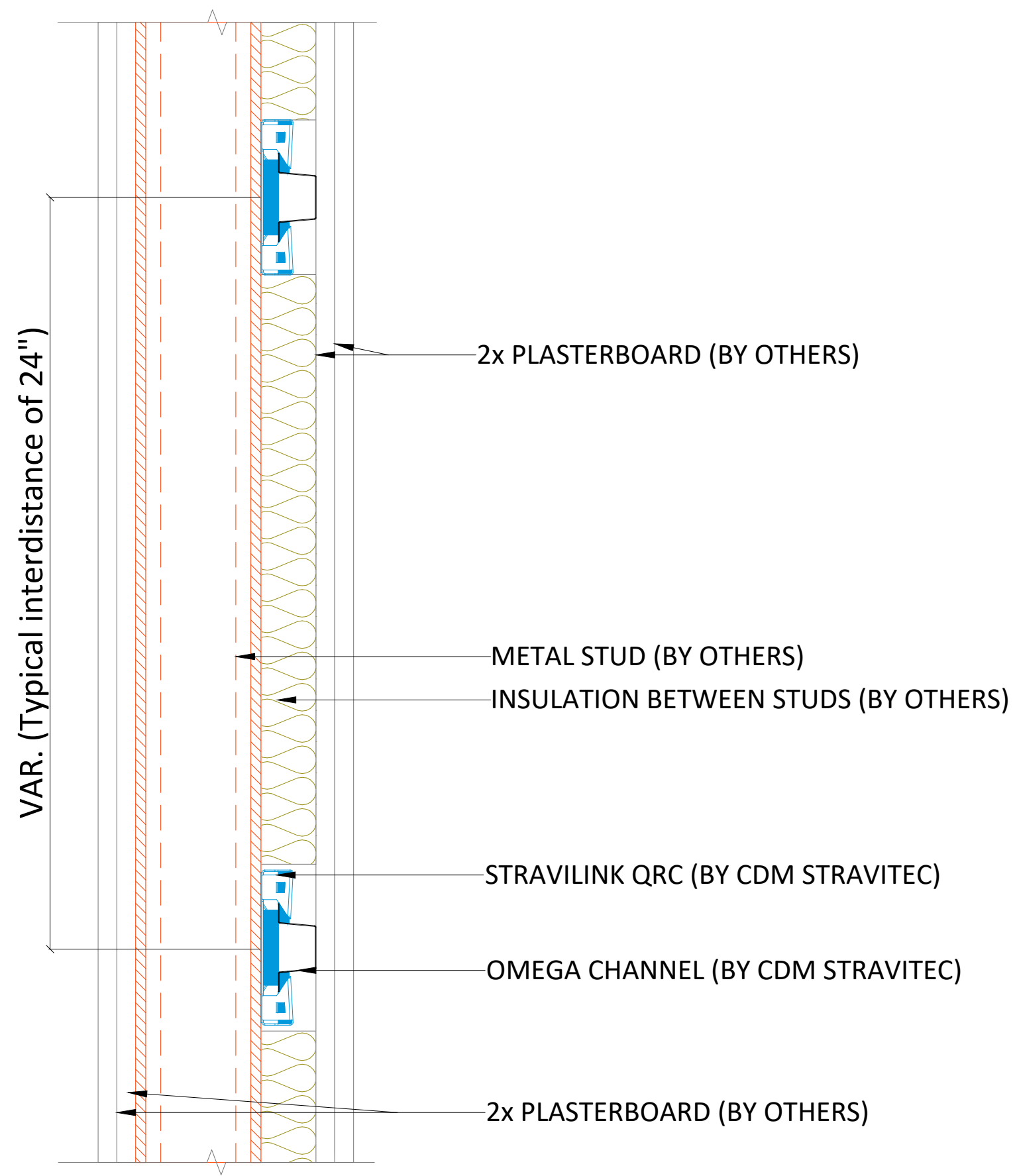
Drawn: ERA 0302/2025

Design: MRO

Check: MRO

Scale: 3" = 1'

Format: ANSI-B



Notes

Legend

Revision Description	Date	Drawn	Rev.
First submission	0302/2025	ERA	A

Load table

Drawing based on



342 N. Queen St., Warehouse D
Lancaster, PA 17603
United States
PH:+1 (888) 454-6236
info-us@cdm-stravitec.com
www.cdm-stravitec.com

Stravilink on Wall Setup

Typical Cross Section - Stravilink QRC (US-CA)-04

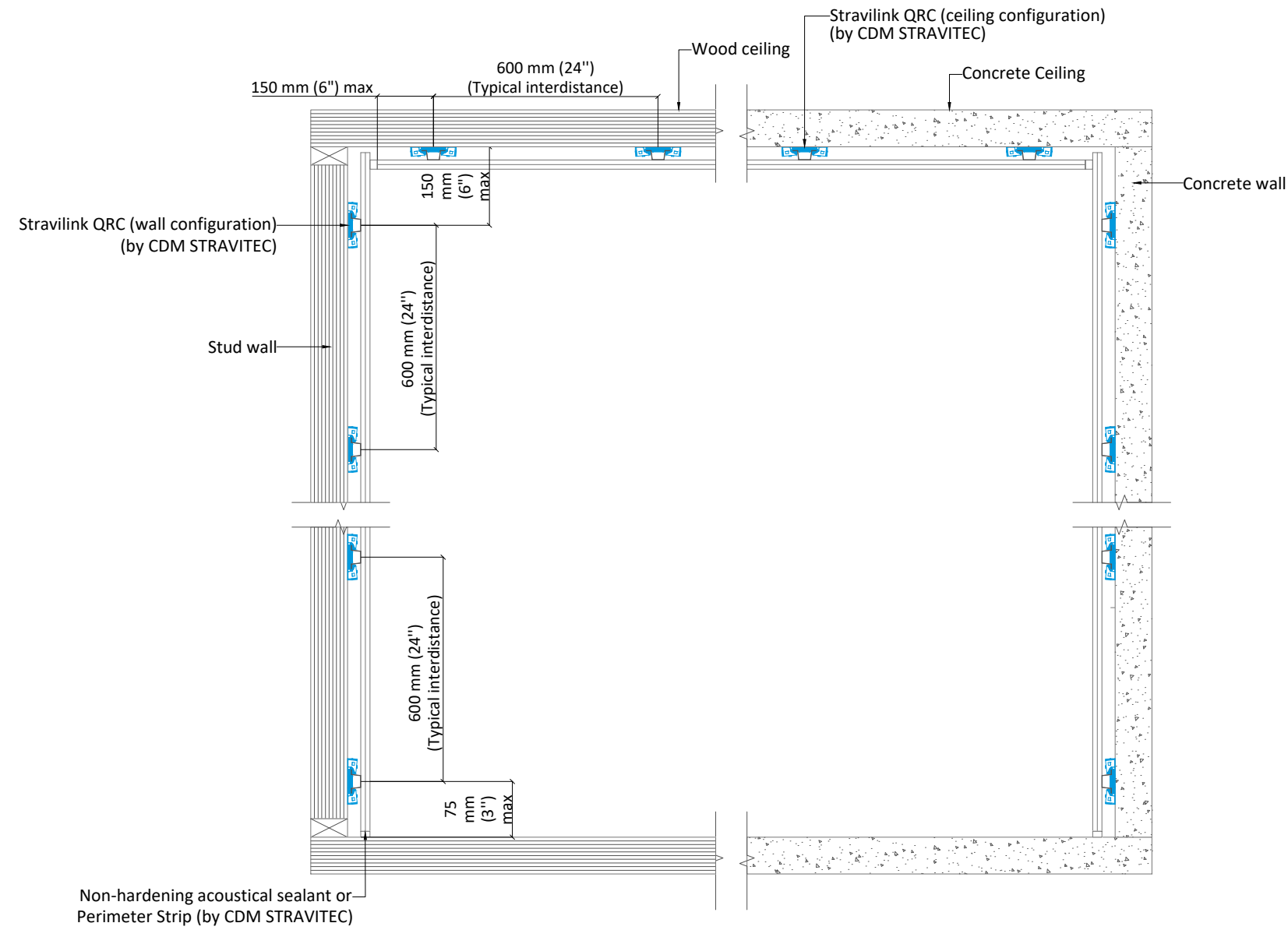
Drawn: ERA 0302/2025

Design: MRO

Check: MRO

Scale: 3" = 1'

Format: ANSI-B



Notes

Legend

Revision Description	Date	Drawn	Rev.
First submission	0302/2025	ERA	A

Load table

Drawing based on



342 N. Queen St., Warehouse D
Lancaster, PA 17603
United States
PH:+1 (888) 454-6236
info-us@cdm-stravitec.com
www.cdm-stravitec.com

This drawing is exclusive property of CDM Stravitec, any reproduction or communication to third parties without prior authorisation is prohibited.

Stravilink QRC: Typical Assemblies I

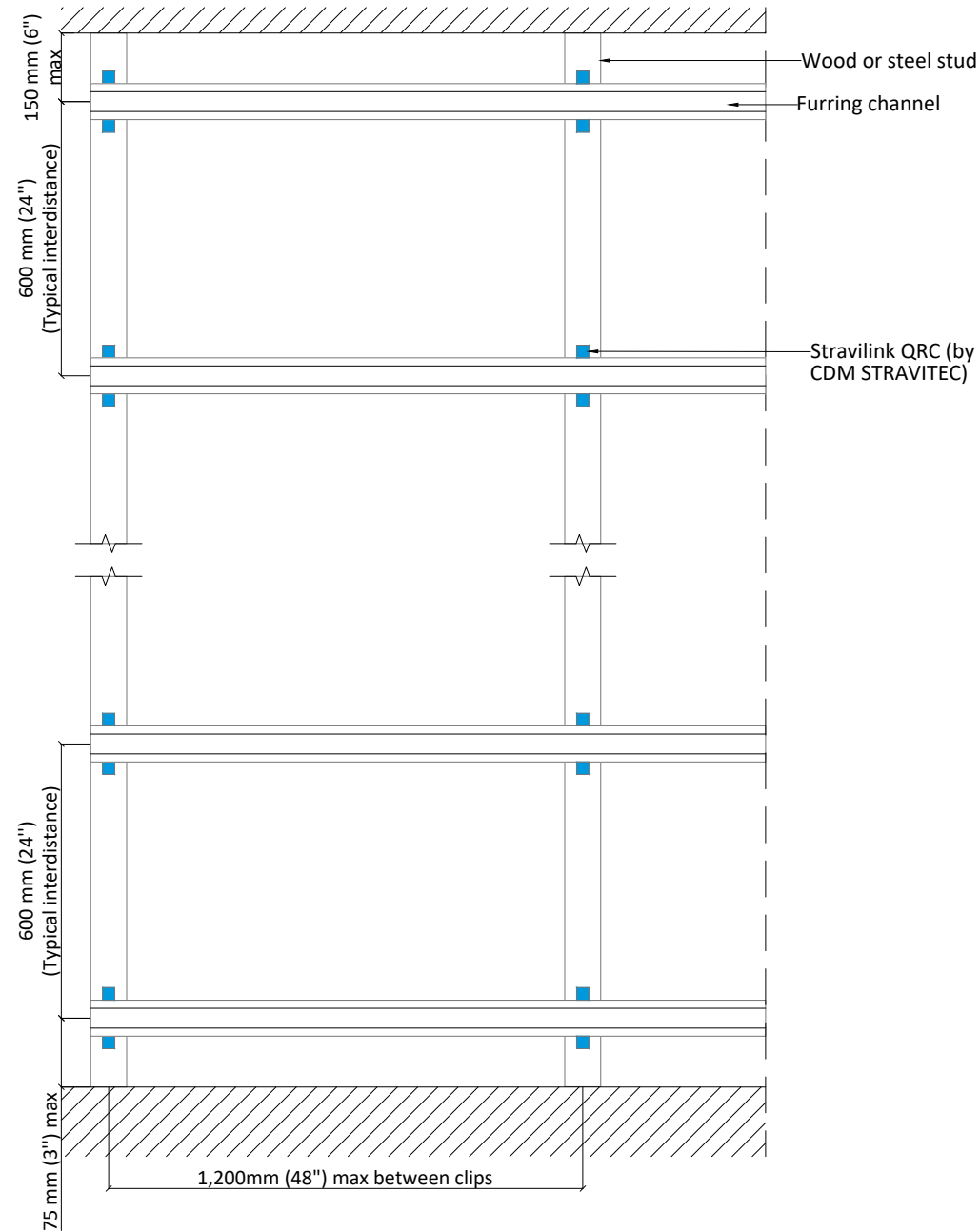
Typical Cross Section - Stravilink QRC (US-CA)-05

Drawn: ERA 0302/2025
Design: MRO
Check: MRO

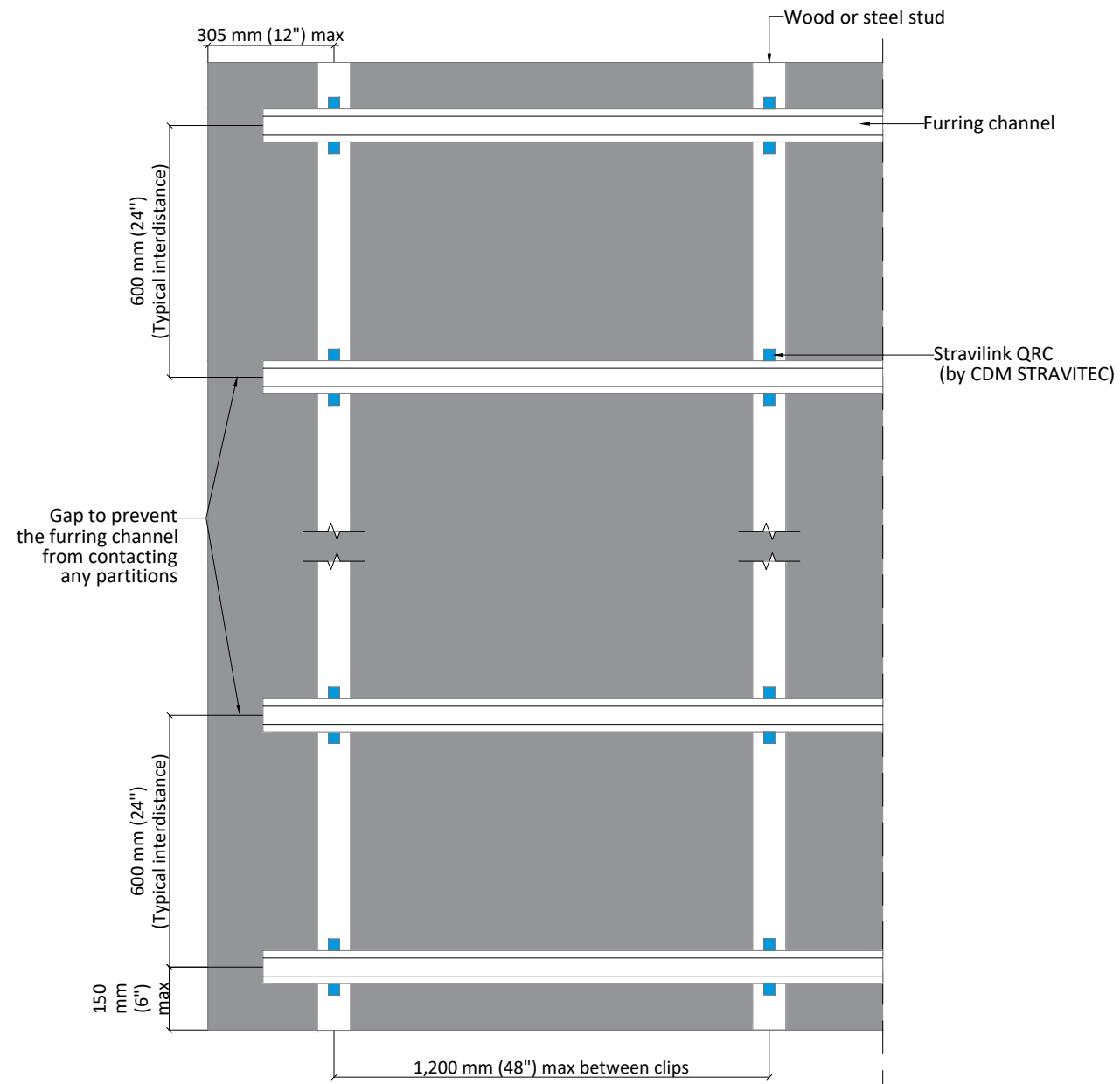
Scale:
3/4" = 1'

Format:
ANSI-B

WALL LAYOUT



CEILING LAYOUT



Notes

Legend

First submission	0302/2025	ERA	A
Revision Description	Date	Drawn	Rev.

Load table

Drawing based on



342 N. Queen St., Warehouse D
Lancaster, PA 17603
United States
PH:+1 (888) 454-6236
info-us@cdm-stravitec.com
www.cdm-stravitec.com

This drawing is exclusive property of CDM Stravitec, any reproduction or communication to third parties without prior authorisation is prohibited.

Stravilink QRC: Typical Assemblies ||

Typical Cross Section - Stravilink QRC (US-CA)-06

Drawn: ERA 0302/2025
Design: MRO
Check: MRO

Scale: 3/4" = 1'

Format:

