

Stravibase Sleeve Datasheet



Stravibase Sleeve is used to acoustically decouple the shear dowels or uplift ties (holding-down bolts) that cross over the isolation system, transferring shear and uplift loads between both sides of the vibration isolation joint (cut).



PHYSICAL & MECHANICAL PROPERTIES

Material type	Color	Shore hardness (ISO 37)	Density [g/cm ³ (lb/ft ³)]	Chemical resistance (ISO 175)	Temperature range
EPDM	Black	70 +/- 5 A	1.21 (75.5)	< 1% ⁽¹⁾	-40/120°C (-40/248°F)

Length	Internal diam. [mm (inches)]	Thickness [mm (inches)]	External diam. [mm (inches)]	Load resistance [kN (kips)]	Max. service load [kN (kips)]	Static stiffness ⁽²⁾ [(MN/mm)/lm ((kips/inch)/lft)]	Dynamic stiffness ⁽²⁾ [(MN/mm)/lm ((kips/inch)/lft)]
Variable	51.5 (2)	8 (5/16)	67.5 (2-5/8)	180 (40.5)	80 (18)	210 (6097)	558 (16202)

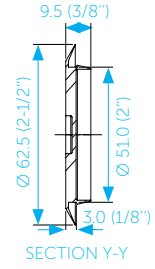
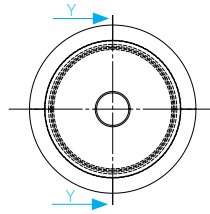
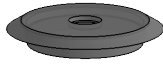
⁽¹⁾% impact on tensile strength

⁽²⁾Static and dynamic stiffness have been given for unit length [lm (lft)]

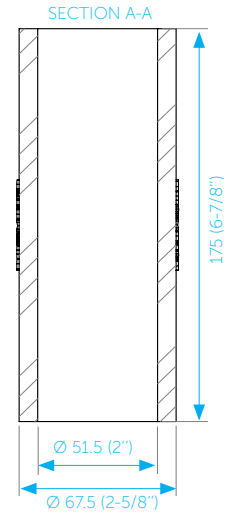
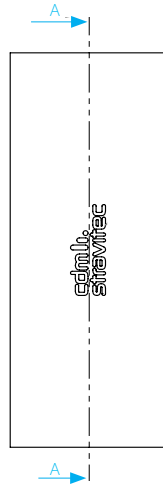


SYSTEM COMPONENTS & DIMENSIONS

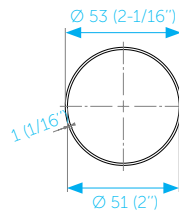
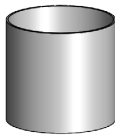
End Cap



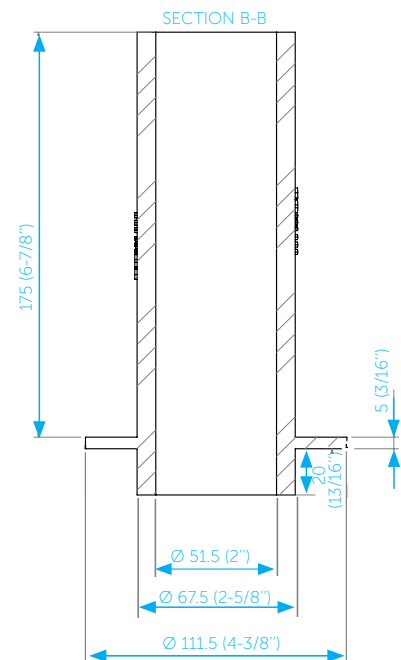
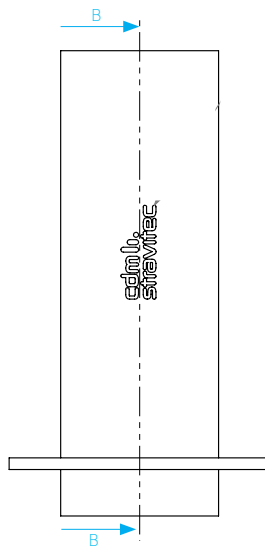
Extension Tube



Extension Ring



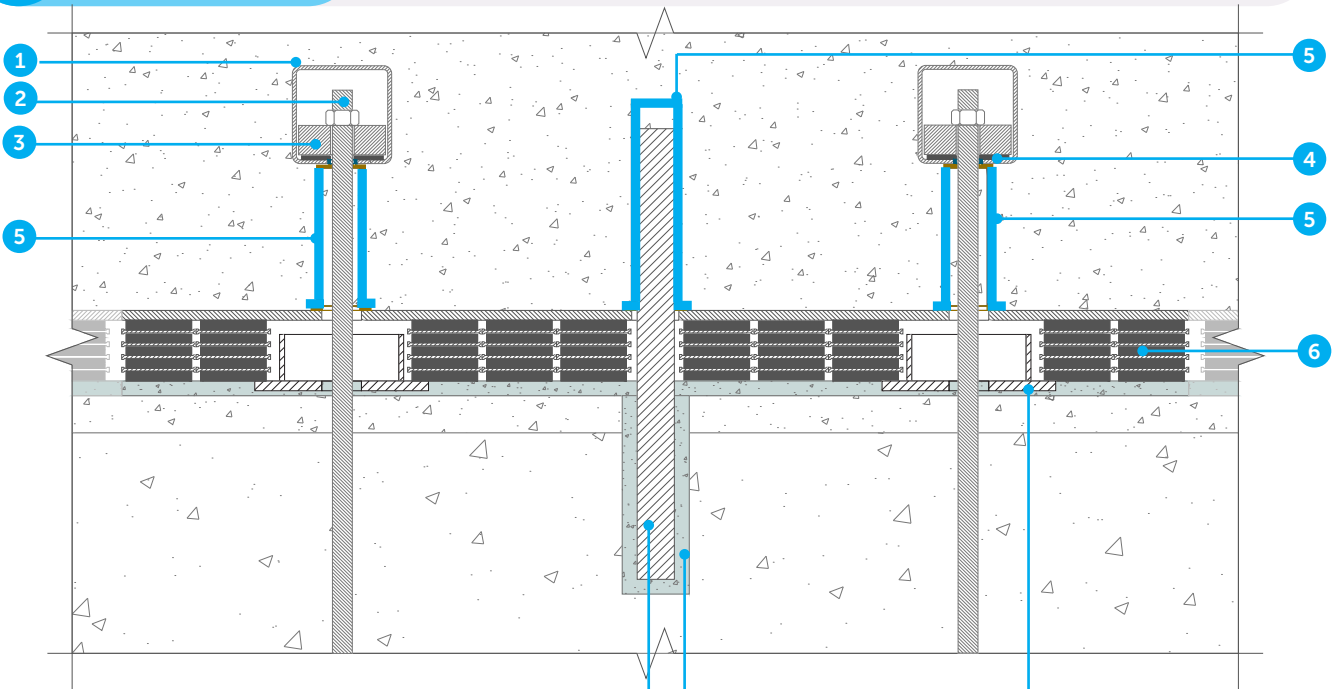
Base Tube



Note:
All dimensions in millimeters (inches).

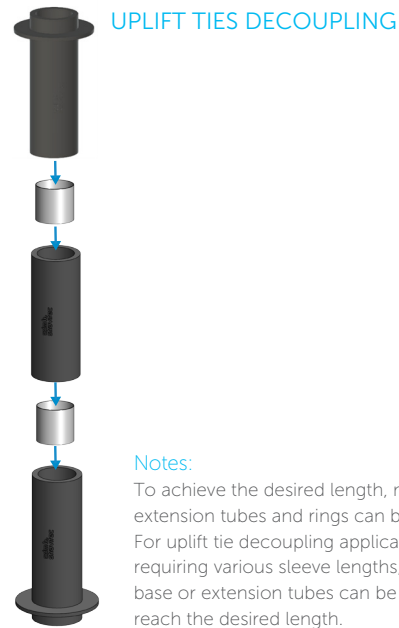
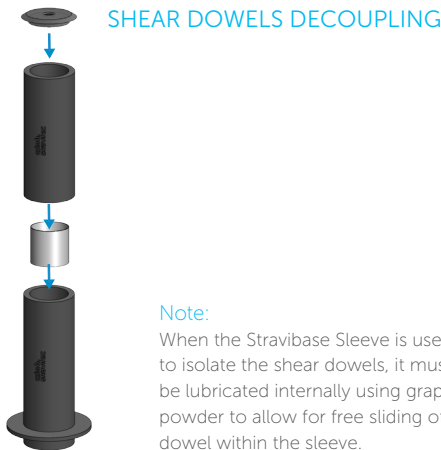


TYPICAL ASSEMBLIES



1. Uplift socket
2. Uplift tie rebar
3. Uplift steel washer
4. Stabilizer bearing

5. Stravibase Sleeve
6. Stravibase VHS
7. Shear dowel
8. Grouting
9. Failsafe



DISCLAIMER

This information is accurate to the best of our knowledge at the time of issue. Information, data and recommendations provided are based on industry accepted testing and prior product usage. It is intended as descriptive of the general capabilities and performance of our products and does not endorse applicability for any particular project. We reserve the right to change products, performance, and data without notice. This document replaces all information supplied prior to the publication hereof. The renders and details present on this document are intended solely for illustration purposes only. The actual components of the final solution may undergo variations, intricately adjusted to the unique details of each project.