

Stravigym SP

Installation Manual

Installation Tools and Components

- Utility knife
- Pen or marker
- Tape measure
- Hand-held circular saw and/or jigsaw
- Screwdriver and screws
- Manual transpallet (optional)
- Personal protective equipment

1 / Supporting Floor & System Components Preparation

Unpack and unroll all the system components and allow them to acclimatize for 24 hours prior to installation. The structural floor should be clean, flat and levelled ($F_{p,25}$ as minimum – meaning a single $\frac{1}{4}$ " (6 mm) defect across 10-feet (3 m). Subfloor shall be dry and clean of any debris (all dust, dirt, grease and foreign materials) before further installation.

2 / Perimeter Isolation

All walls, columns and service penetrations through the floating floor should be isolated using Perimeter Strips. The height of the strips should be the distance between the supporting floor and the finished level of the floating floor.



3 / Stravigym Mat-W25_x

Stravigym Mat-W25_x can be loose laid without the use of mechanical fixings or adhesive. It should be installed profiled side down ensuring that any air trapped underneath is removed. Sheets of Stravigym Mat-W25_x should be carefully butt jointed together to ensure no gaps are visible.

4 / Board Layer 1

Loose lay the first board layer (Plywood or OSB/3) perpendicular to the Stravigym Mat-W25_x layer.

5 / Damping Layer

Loose lay the Damping Layer sheet over the first board layer without any overlaps and ensure the entire floor is covered.

The Damping Layer joints should be staggered so they are not located in the same place as the board joints.

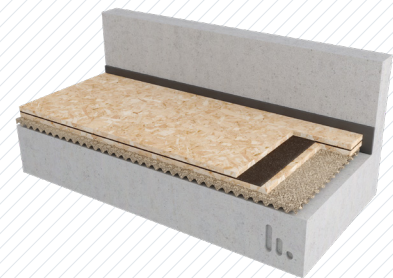
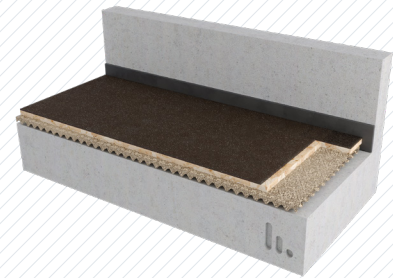
6 / Board Layer 2

Install the second board layer perpendicular to the first board layer.

The second layer of boards should be staggered so the joints are not located in the same place as the Damping Layer joints underneath.

All layers must now be mechanically attached to each other with screws that are short enough so that they do not make contact with the supporting floor after deflection of the system.

It is recommended that a screw be placed every 16" (406 mm).



7 / Stravigym GympactLayer

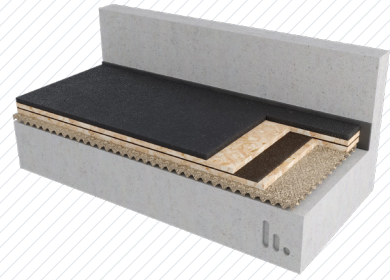
Install Stravigym GympactLayer by loose laying it on the top board layer. If the Stravigym GympactLayer is composed of more than one layer (as is the case for Stravigym GympactLayer-45) stagger the sheets to ensure the joints of the two layers are not located in the same place. The profiled sheet is always the first one to be installed – with the profile facing down onto the board layer.

For enhanced stability the Stravigym GympactLayer can be permanently fixed to the board by using either a double-sided adhesive tape or Sika Tacky ST, a two component polyurethane adhesive (or similar).

8 / Floor Covering & Other Finishing Details

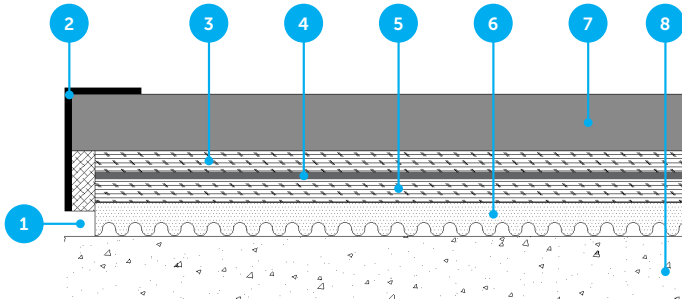
Install the final floor finish using the manufacturers installation instructions.

Ensure that the final floor finish is not rigidly connected to the surrounding walls.





If the Stravigym floating floor system is a different height to the surrounding structure an edge profile will be required. If a rigid edge profile is used ensure that the height of it is less than the height of the total floor system so that it does not make contact with the supporting floor after deflection ($1 > \text{deflection} + \text{creep}$).



1. Gap (can be filled with an elastic adhesive and sealant)
2. Edge Profile
3. Board layer
4. Damping Layer
5. Board layer
6. Stravigym Mat-W25x
7. Impact Layers + Floor Covering
8. Structural Floor



If different Stravigym floating floor systems are being installed a rubber edge profile can be used to transition to different floor heights.

DISCLAIMER

This information is accurate to the best of our knowledge at the time of issue. Information, data and recommendations provided are based on industry accepted testing and prior product usage. It is intended as descriptive of the general capabilities and performance of our products and does not endorse applicability for any particular project. We reserve the right to change products, performance, and data without notice. This document replaces all information supplied prior to the publication hereof.