



# Stravigym GympactTile<sup>\*</sup>

## Datasheet

Stravigym GympactTile is a [recycled rubber tile](#) that can be used alone (1.25" (30 mm), 2" (50 mm) and 2.75" (70 mm)), to provide a standard level of acoustical performance. It can also be installed as impact absorption layer of Stravigym systems to achieve even higher acoustical performance.

Stravigym GympactTile is compatible with most gym areas and physical activities.

### SYSTEM DIMENSION

Product	Installed size**	Thickness	Weight (lbs/kg)
Stravigym GympactTile-30		1.25"/30 mm	19.3 lbs/ 8.75 kg
Stravigym GympactTile-50	24" x 24"/610 x 610 mm	2"/50 mm	24 lbs/ 11 kg
Stravigym GympactTile-70		2.75"/70 mm	29 lbs/ 13 kg

\*\*Stravigym GympactTile is manufactured to a bigger dimension and compressed during installation.

\*Previously known as GYMPACT-Tile



## PHYSICAL & MECHANICAL PROPERTIES

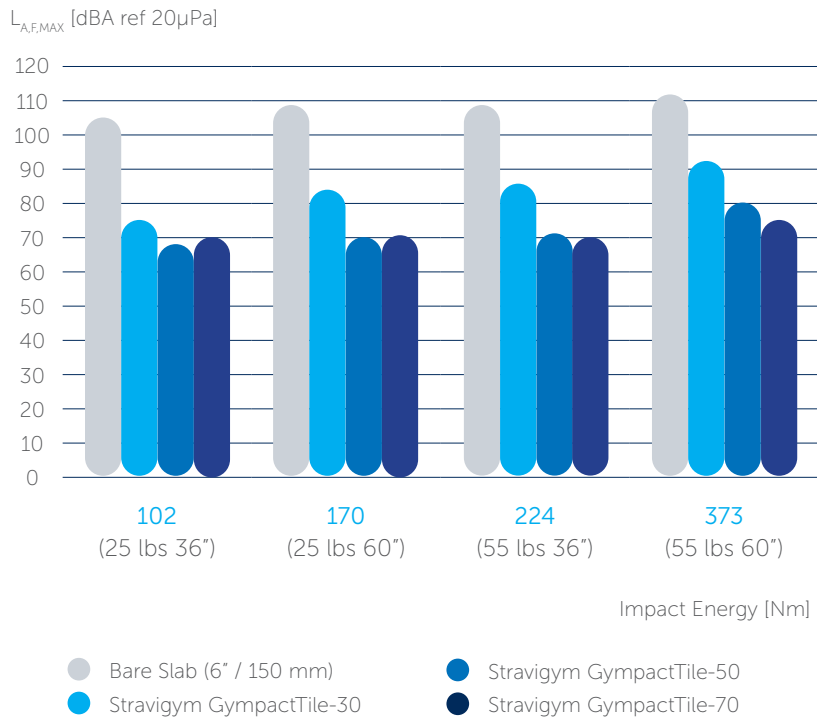
Test Description	Standard	Results
Freeze/Thaw	ASTM C67	No deterioration
Rubber Deterioration/Air Oven	ASTM D573	No deterioration
Slip Resistance	ASTM E303	Dry 102/Wet 62
Slip Resistance	ASTM D2047	Dry 0.81/Wet 0.82
Compression Deflection	ASTM D1667	29.5 PSI to 25% Compression
Compression Set	ASTM D395	4.37% Permanent Set
Tensile Strength	ASTM D412	107 PSI
Elongation at Break	ASTM D412	165%
Tear Strength	ASTM D624	33.1 Lbs/Inch
Wear Surface Density (Durability)		>60 lbs/CuFt.



### Drop-Weight Tests

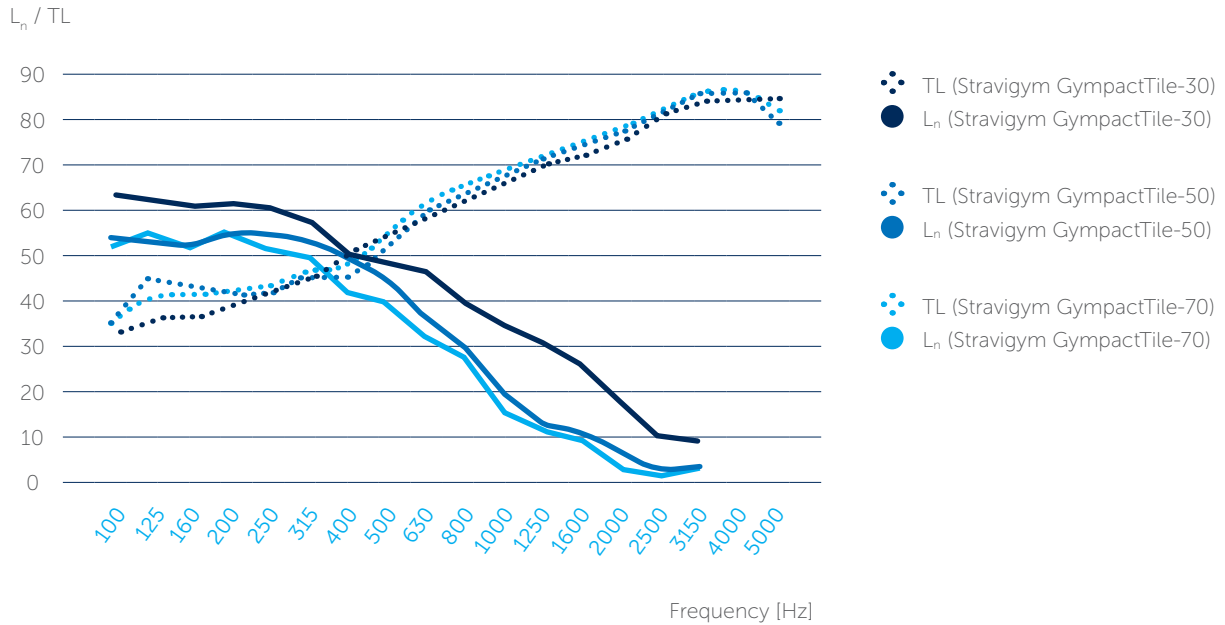
#### Test Setups

- Stravigym GympactTile-30/-50/-70
- 6" (150 mm) concrete slab



## Airborne & Impact Sound Transmission

Note: the test setups are the same as used for the drop-weight test.



Rating	Stravigym GympactTile-30	Stravigym GympactTile-50	Stravigym GympactTile-70
STC (ASTM E90)	55	54	57
IIC (ASTM E492)	56	62	64
ΔIIC (ASTM 2179)	26	27	28

Version 2023-1 - All information provided in this document is subject to legal disclaimers. © 2023 CDM Stravitec nv. All rights reserved.

## DISCLAIMER

This information is accurate to the best of our knowledge at the time of issue. Information, data and recommendations provided are based on industry accepted testing and prior product usage. It is intended as descriptive of the general capabilities and performance of our products and does not endorse applicability for any particular project. We reserve the right to change products, performance, and data without notice. This document replaces all information supplied prior to the publication hereof.