

Stravifloor Mat-W

Installation Manual

Installation Tools and Components

- Stanley knife
- Personal protective equipment (PPE)

1 / Supporting Floor Preparation

Ensure the installation area is completely watertight and the supporting floor is fully cured, dry, clean, smooth, level and structurally sound prior to installation.

Installation area should be free of dust, solvent, wax, grease, wax, sealers, asphalt, curing and hardening compounds, alkaline salts, old adhesive residue, and other extraneous materials, according to ASTM F710.

2 / Lateral Isolation Strip

All adjacent walls should be isolated using Perimeter Strip. The height of this isolation should be the distance between the supporting floor and the finished level of the floor.



3 / Underscreed Layer

Unpack and unroll the mat (dimple-side down), store it in the room where the installation will take place and allow it to acclimate to its environment for 24 hours or more before installation, maintaining a constant room temperature between 65°F - 95°F (18°C - 35°C).

Install the mat side by side onto the subfloor with the wavy side directing to the structural floor, removing all trapped air and cut to the desired length. Proceed the installation covering the entire floor. After completion, the Stravifloor Mat-W layer should cover the entire flooring area without gaps. Never fasten the underscreed layer mechanically to the subfloor.

4 / Underscreed Layer 2 (optional)

Two or three layers of Stravifloor Mat-W can be stacked to improve performance. In this case, all layers should be criss-crossed, so the top layer joints are not located in the same place as the layer joints underneath.

5a / Protection Layer

A protection foil covering the entire flooring area can be installed prior to the screed. Overlaps of minimum 4" (100 mm) should be made. Also cover the perimeter strip with the protection foil. Never fasten the protection foil mechanically, using screws, nails or staples.

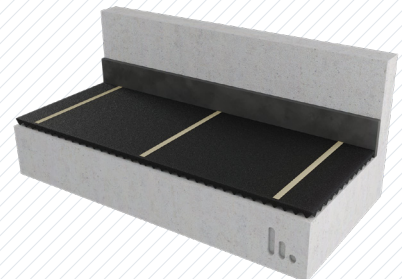
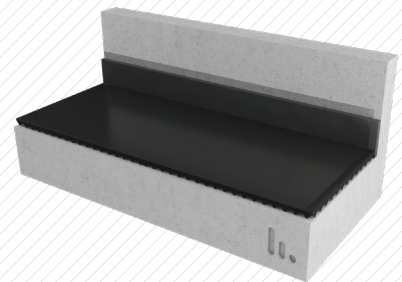
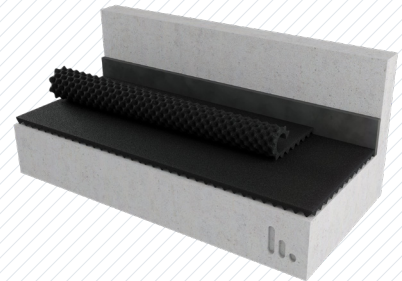
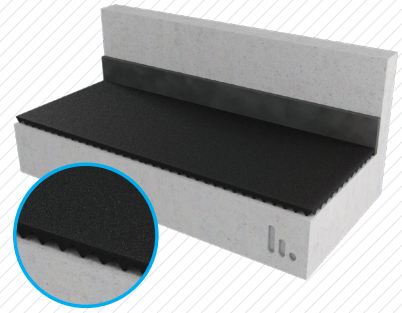
5b / Or taped joints

If a protective layer of polythene is not installed the joints of Stravifloor Mat-W should be taped together with building grade self-adhesive tape (minimum 2" (50 mm) wide).



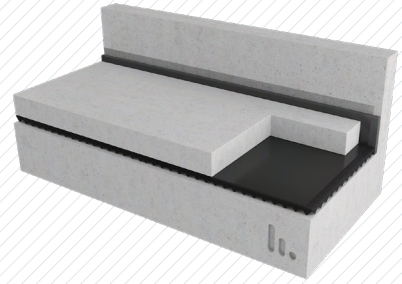
Recommended Duct Tapes:

- Spada® AT 132
- 3M Value Duct Tape 1900



6 / Screed or Reinforced Concrete Slab

Install screed or reinforced concrete floating slab. If the finishing includes a skirting board, make sure that there is no rigid contact between skirting board and floating floor.



DISCLAIMER

This information is accurate to the best of our knowledge at the time of issue. Information, data and recommendations provided are based on industry accepted testing and prior product usage. It is intended as descriptive of the general capabilities and performance of our products and does not endorse applicability for any particular project. We reserve the right to change products, performance, and data without notice. This document replaces all information supplied prior to the publication hereof.