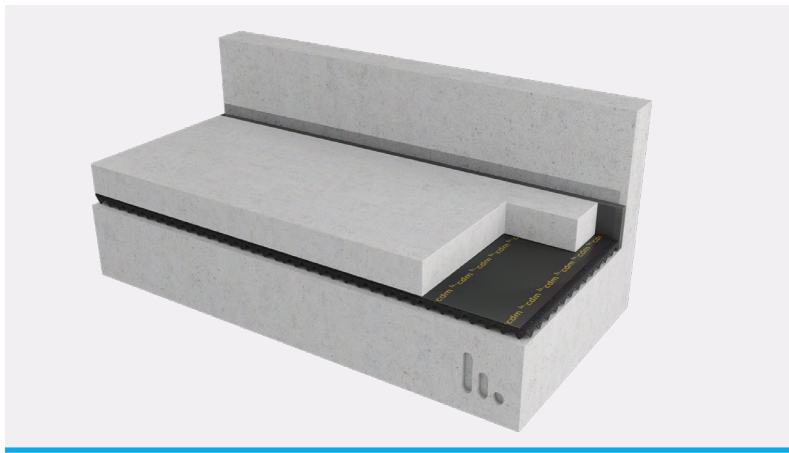


Stravifloor Mat-W8_a^{*} Datasheet



Stravifloor Mat-W8_a is a mat made of 100% regenerated crumb rubber for **impact noise isolation** of floating slabs and screeds.



SYSTEM COMPONENTS & DIMENSIONS

- Mat dimension: 1.25 m x 10 m x 8/4 mm
- Pallet information: 8 rolls/pallet - pallet: 1200x800x1400 mm - 460 kg



PHYSICAL & MECHANICAL PROPERTIES

Mechanical properties

Max. total load 0.10 MPa	Max. occasional load 0.25 MPa	Density⁽¹⁾ 710 kg/m ³	Surface weight⁽¹⁾ 4.26 kg/m ²
Tensile strength⁽²⁾ > 0.35 MPa	Elongation at break⁽²⁾ > 40 %	Creep rate⁽³⁾ 0.22 % H/dec	Cdyn⁽⁴⁾ 20 MN/m ³

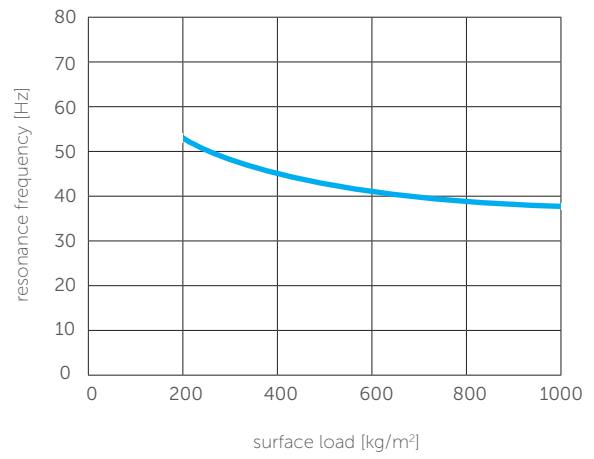
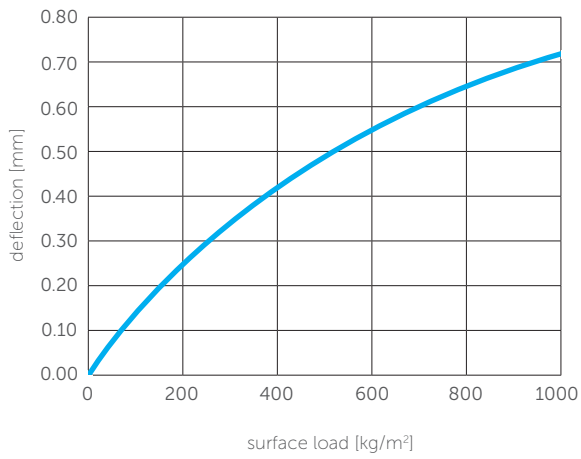
⁽¹⁾ISO 845 - ⁽²⁾ISO 37 - ⁽³⁾ISO 8013, at 0.02 mPa - ⁽⁴⁾EN 29052-1

Thermal Properties

Temperature range -30°C / 70°C	Reaction to fire Class E ⁽¹⁾ / Class B2 ⁽²⁾	Thermal conductivity 0.13 W/m°C ⁽³⁾	Thermal resistance 0.064 m ² C/W ⁽³⁾
--	---	--	--

⁽¹⁾EN 13501-1 - ⁽²⁾DIN 4102 - ⁽³⁾EN 12667

*Previously known as CDM-MTA-8/4

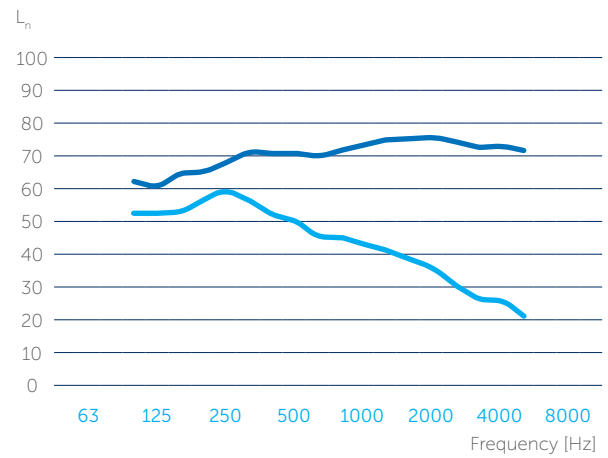
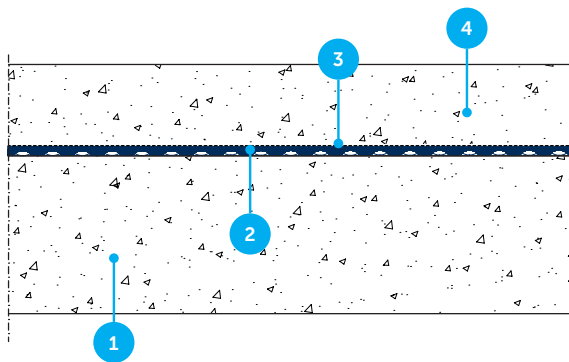


ACOUSTICAL RESULTS

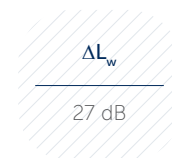
Test Report ECO-SCAN A-2015_ZO_198-G042*

1. Standard reinforced concrete floor (140 mm)
2. Stravifloor Mat-W8_a
3. PE-foil (0.2 mm)
4. Floating floor: reinforced concrete slab (100 mm)

*Laboratory report available upon request



● L_n
● $L_{n,0}$



DISCLAIMER

This information is accurate to the best of our knowledge at the time of issue. Information, data and recommendations provided are based on industry accepted testing and prior product usage. It is intended as descriptive of the general capabilities and performance of our products and does not endorse applicability for any particular project. We reserve the right to change products, performance, and data without notice. This document replaces all information supplied prior to the publication hereof.