

# Stravilink WH3<sup>\*</sup>

## Datasheet



Stravilink WH3 is a [resilient wall brace](#) used to isolate a wall from an adjacent support.



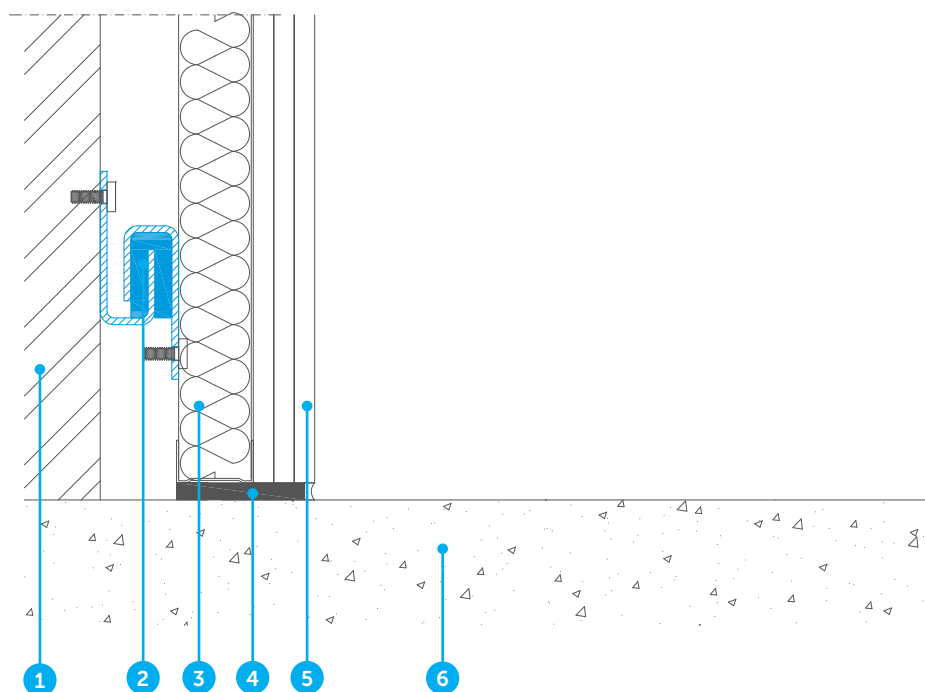
### BENEFITS

- Standard wall tie designed to take a horizontal load of 0 to 200N (45 lbs) with a design load of 100N (22.5 lbf)
- Cost effective
- Quick and easy to install
- Minimum void depth between walls is 41 mm (1-39/64")
- Steel elements are Zinc plated
- Other types available upon request
- To specify which Stravilink WH3 wall tie you require CDM Stravitec's engineers will need the following information:
  - Decoupled structure is supported or not
  - Horizontal and vertical loads

<sup>\*</sup>Previously known as CDM-WH3



## TYPICAL ASSEMBLIES



- |                     |  |
|---------------------|--|
| 1. Wall             | 4. Plasterboards                       |
| 2. Stravilink WH3   | 5. Structural reinforced concrete slab |
| 3. Absorption layer | 6. Stravilink WallStrip                |

### DISCLAIMER

This information is accurate to the best of our knowledge at the time of issue. Information, data and recommendations provided are based on industry accepted testing and prior product usage. It is intended as descriptive of the general capabilities and performance of our products and does not endorse applicability for any particular project. We reserve the right to change products, performance, and data without notice. This document replaces all information supplied prior to the publication hereof.