

Stravilink WallBatten^{*}

Datasheet

Stravilink WallBatten is a [resilient wall batten](#) used to isolate a dry wall construction from an adjacent support.



BENEFITS

- Cost effective
- Quick and easy to install
- Standard thicknesses are 56 mm (2-13/64") and 96 mm (3-25/32")
- Other thicknesses available to order
- A resilient strip should be installed to support the base of the wall and to decouple the perimeter of the wall
- To specify which Stravilink WallBatten wall batten you require CDM Stravitec's engineers will need the following information:

The required performance level - this will determine the type of Stravilink WallBatten

The height and weight of the supported wall - this will determine the supply of the base isolation strip

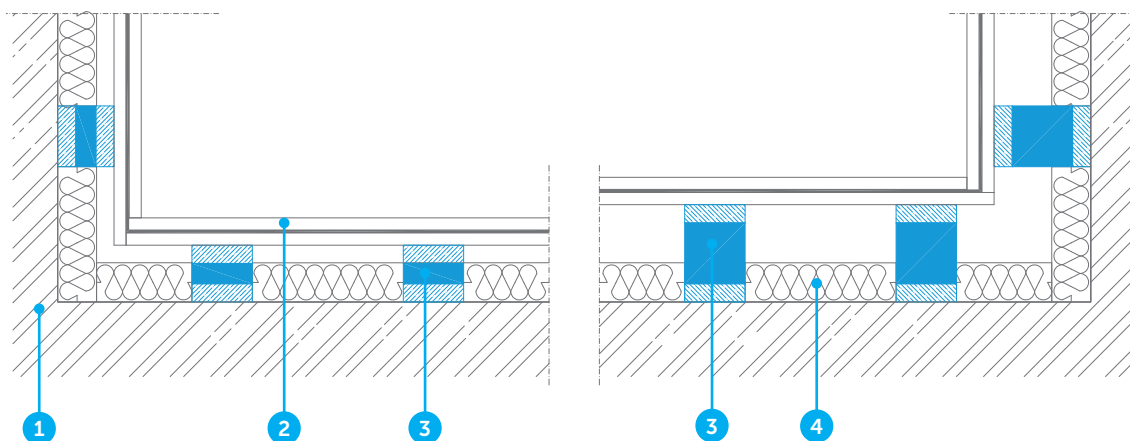
Details of any items supported off the walls - such as televisions etc.

The supporting wall - for us to recommend which fixings would be best to use

*Previously known as CDM-WALL-T



TYPICAL ASSEMBLIES



1. Wall
2. Plasterboard, gypsum board or dry lining with optional damping layer
3. Stravilink WallBatten
4. Absorption layer

DISCLAIMER

This information is accurate to the best of our knowledge at the time of issue. Information, data and recommendations provided are based on industry accepted testing and prior product usage. It is intended as descriptive of the general capabilities and performance of our products and does not endorse applicability for any particular project. We reserve the right to change products, performance, and data without notice. This document replaces all information supplied prior to the publication hereof.