

Stravilink CC40^{*}

Datasheet

Stravilink CC40 Elastomer Acoustic Suspension Hangers have been designed to suspend acoustic ceilings using 47 mm (1-27/32") standard profile (or CDM Stravitec Profile-U47/17-3000), improving airborne isolation performance.



BENEFITS

- Cost effective
- Quick and easy to install

Hangers can be ordered in two different stiffnesses:

Stravilink CC40-150	10-20 kg (22-44 lbs) per hanger
Stravilink CC40-350	20-45 kg (44-99 lbs) per hanger

- Natural frequency between 12 and 18Hz
- Failsafe easily engaged - as shown
- System comes optional with an elastomer washer to allow direct fixation to the ceiling
- Variable void depths are achievable (Stravilink CC40 hanger depth is 40 mm (1-37/64"))
- Steel elements are Zinc plated
- For optimum results resilient perimeter strips should be used to provide lateral isolation between the suspended ceiling and adjacent walls. A wide range of roll sizes are available
- To specify which Stravilink CC40 hangers you require CDM Stravitec's engineers will need the following information:

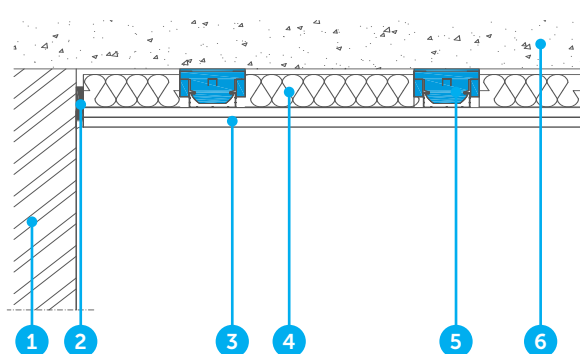
The weight and construction of the supported ceiling - this will determine the type of hanger

The required void between the supporting soffit and the suspended ceiling

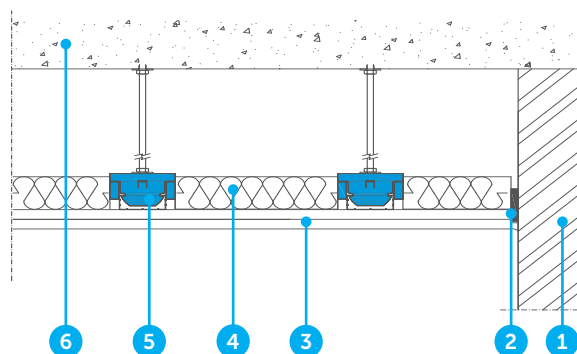
*Previously known as CDM-CC40



TYPICAL ASSEMBLIES



1. Wall
2. Perimeter Strip
3. Plasterboards, gypsum board or dry lining



4. Absorption layer
5. Stravilink CC40
6. Structural reinforced concrete slab

DISCLAIMER

This information is accurate to the best of our knowledge at the time of issue. Information, data and recommendations provided are based on industry accepted testing and prior product usage. It is intended as descriptive of the general capabilities and performance of our products and does not endorse applicability for any particular project. We reserve the right to change products, performance, and data without notice. This document replaces all information supplied prior to the publication hereof.