



Stravilink WallStrip^{*}

Datasheet

The [resilient strip, Stravilink WallStrip](#), has been specially designed to minimize the flanking transmissions of load bearing walls, and improve the vibration and structural noise isolation of load bearing walls thanks to the decrease of unwanted noise transmissions through the building.



BENEFITS

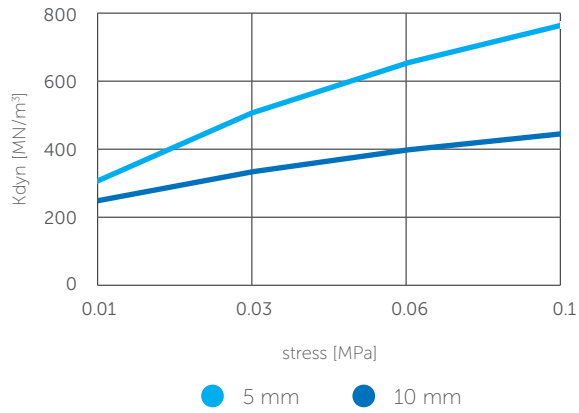
- High load capacity, offering a wide range of workloads
- Tuned dynamic performance versus static stiffness
- Structural function by decreasing cracks effects on the wall
- Excellent resistance to alkaline water environment (direct contact with wet concrete)
- Excellent adhesion to materials such as gypsum and concrete due to its rugged surface, ensuring an excellent lateral stiffness
- Excellent long term behaviour (low creep / differential deflection)
- Standard thicknesses of 5 mm (0.2") and 10 mm (0.4")
- Standard widths of 130 mm (5-1/8") and 200 mm (7-7/8") (other widths available on request)
- Quick and easy to install
- In order to specify the correct Stravilink WallStrip solution our engineers will need to know the required acoustic performance, wall type and dimensions, and possible live loads.
- If necessary this system can work in parallel with special resilient fastening systems, as Stravilink WH**, to reinforce the lateral stiffness of the isolated wall.

*Previously known as CDM-WALL-STRIP
**Previously known as CDM-WH

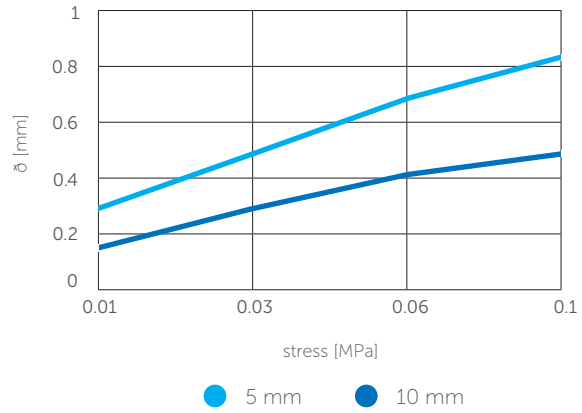


PHYSICAL & MECHANICAL PROPERTIES

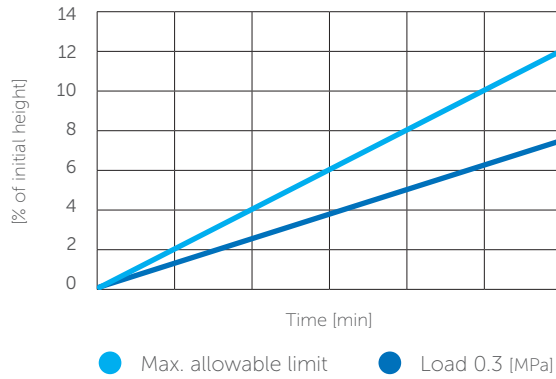
Dynamic Stiffness



Deflection



Additional Deflection by Creep



Thermal Conductivity

Reaction to fire

Density

0.13 W/m°C⁽¹⁾

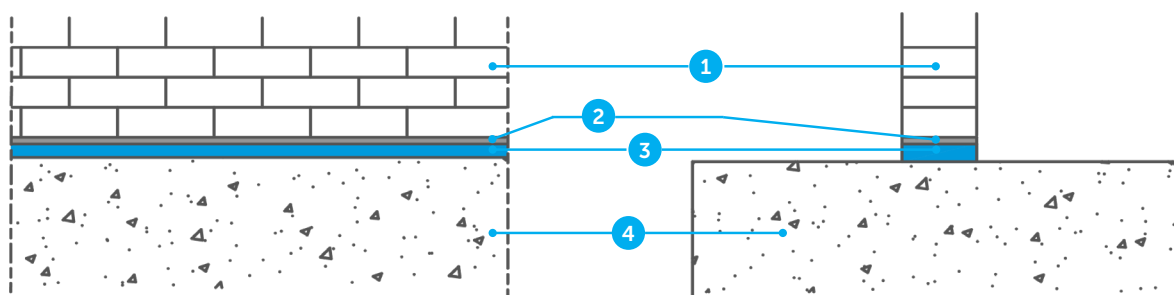
Class E⁽²⁾ / Class B2⁽³⁾

710 kg/m⁽⁴⁾

⁽¹⁾ EN 12667
⁽²⁾ EN 13501-1
⁽³⁾ DIN 4102
⁽⁴⁾ ISO 845



TYPICAL ASSEMBLIES



1. Masonry
2. Mortar bed (optional)

3. Stravilink WallStrip
4. Base structure

DISCLAIMER

This information is accurate to the best of our knowledge at the time of issue. Information, data and recommendations provided are based on industry accepted testing and prior product usage. It is intended as descriptive of the general capabilities and performance of our products and does not endorse applicability for any particular project. We reserve the right to change products, performance, and data without notice. This document replaces all information supplied prior to the publication hereof.