

Notes	
System	Stravifloor Channel (EN)
<p>1. The structural floor should comply with the required tolerances regarding gradient (0,1 % or 1 mm/m) and smoothness (max. 2 mm). It should be dry and free of obstacles, discontinuities, dust, etc.</p> <p>2. A rigid connection should be avoided between the floating slab and all vertical elements (as walls, columns, ...) by adding a void or a layer of lateral isolation between the isolated slab and the vertical element.</p> <p>For more detailed information ask for Stravifloor Channel Installation Manual.</p> <p>MINIMUM SYSTEM TOTAL BUILD-UP HEIGHT (BEFORE DEFLECTION): 86 mm</p>	

Legend

First submission	2025/12/04	VPR	A
Revision Description	Date	Drawn	Rev.

Load table

Drawing based on



Reutenbeek 9-11
B-3090 Overijse Belgium
PH: +32 2 687 79 07
FX: +32 2 687 35 52
info@cdm-stravitec.com
www.cdm-stravitec.com

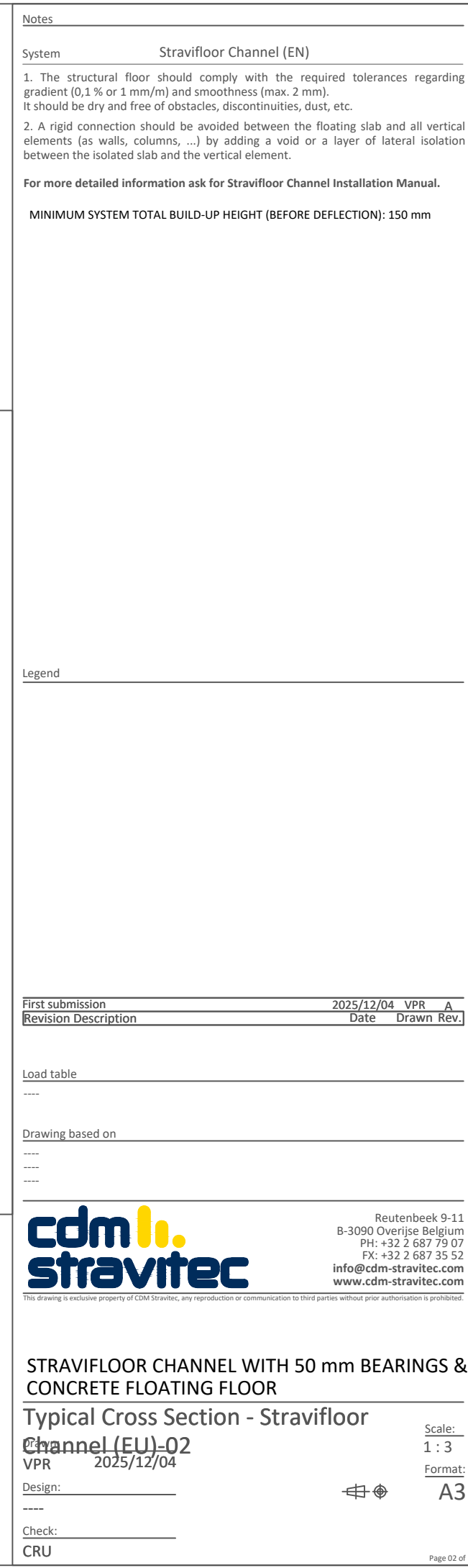
This drawing is exclusive property of CDM Stravitec, any reproduction or communication to third parties without prior authorisation is prohibited.

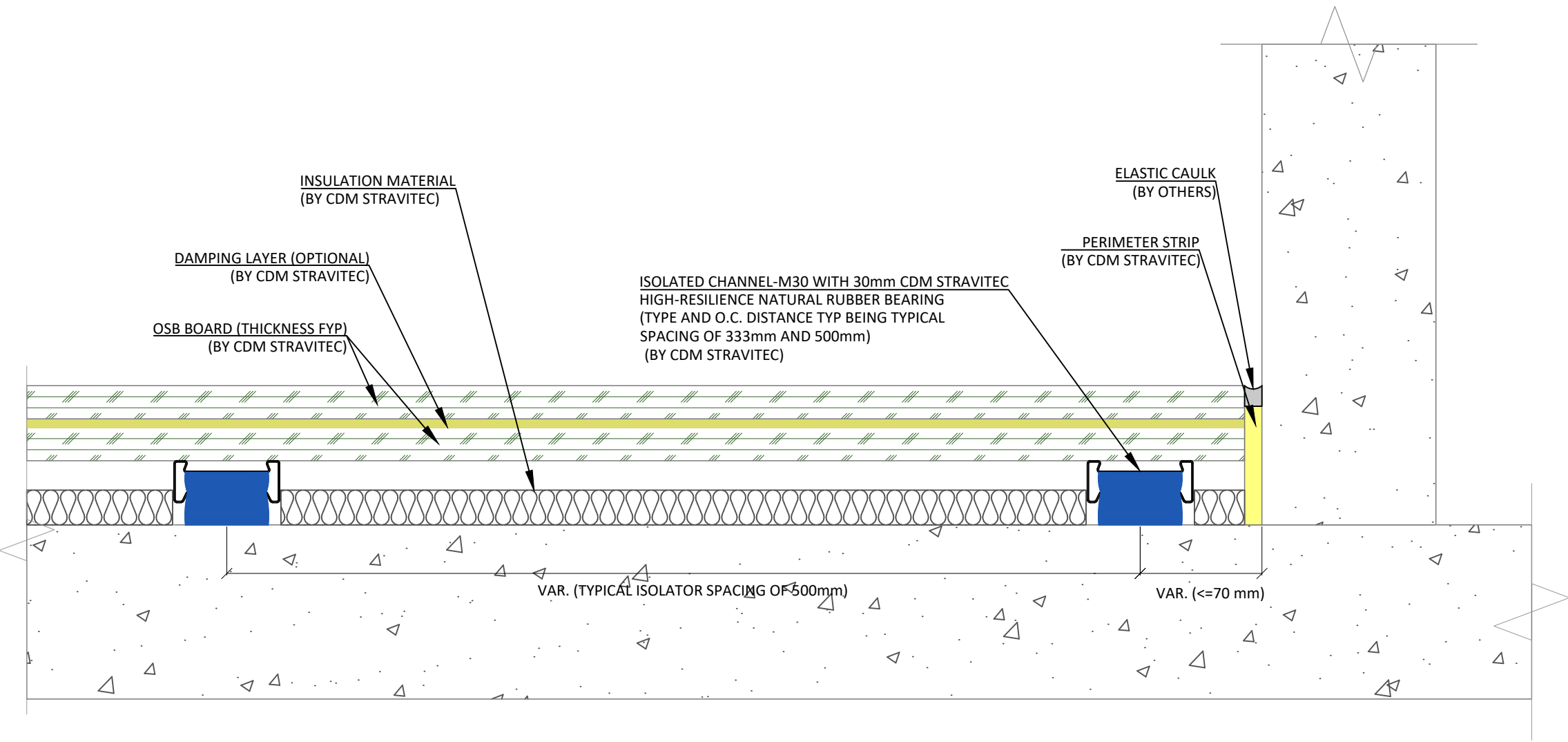
STRAVIFLOOR CHANNEL WITH 50 mm BEARINGS & PANELIZED FLOATING FLOOR

Typical Cross Section - Stravifloor Channel (EU)-01

Design: VPR
Check: CRU

Scale: 1 : 3
Format: A3





Notes

System Stravifloor Channel (EN)

1. The structural floor should comply with the required tolerances regarding gradient (0,1 % or 1 mm/m) and smoothness (max. 2 mm). It should be dry and free of obstacles, discontinuities, dust, etc.

2. A rigid connection should be avoided between the floating slab and all vertical elements (as walls, columns, ...) by adding a void or a layer of lateral isolation between the isolated slab and the vertical element.

For more detailed information ask for Stravifloor Channel Installation Manual.

MINIMUM SYSTEM TOTAL BUILD-UP HEIGHT (BEFORE DEFLECTION): 67 mm

Legend

First submission	2025/12/04	VPR	A
Revision Description	Date	Drawn	Rev.

Load table

Drawing based on



Reutenbeek 9-11
B-3090 Overijse Belgium
PH: +32 2 687 79 07
FX: +32 2 687 35 52
info@cdm-stravitec.com
www.cdm-stravitec.com

This drawing is exclusive property of CDM Stravitec, any reproduction or communication to third parties without prior authorisation is prohibited.

STRAVIFLOOR CHANNEL WITH 30 mm BEARINGS & PANELIZED FLOATING FLOOR

Typical Cross Section - Stravifloor Channel (EU)-03

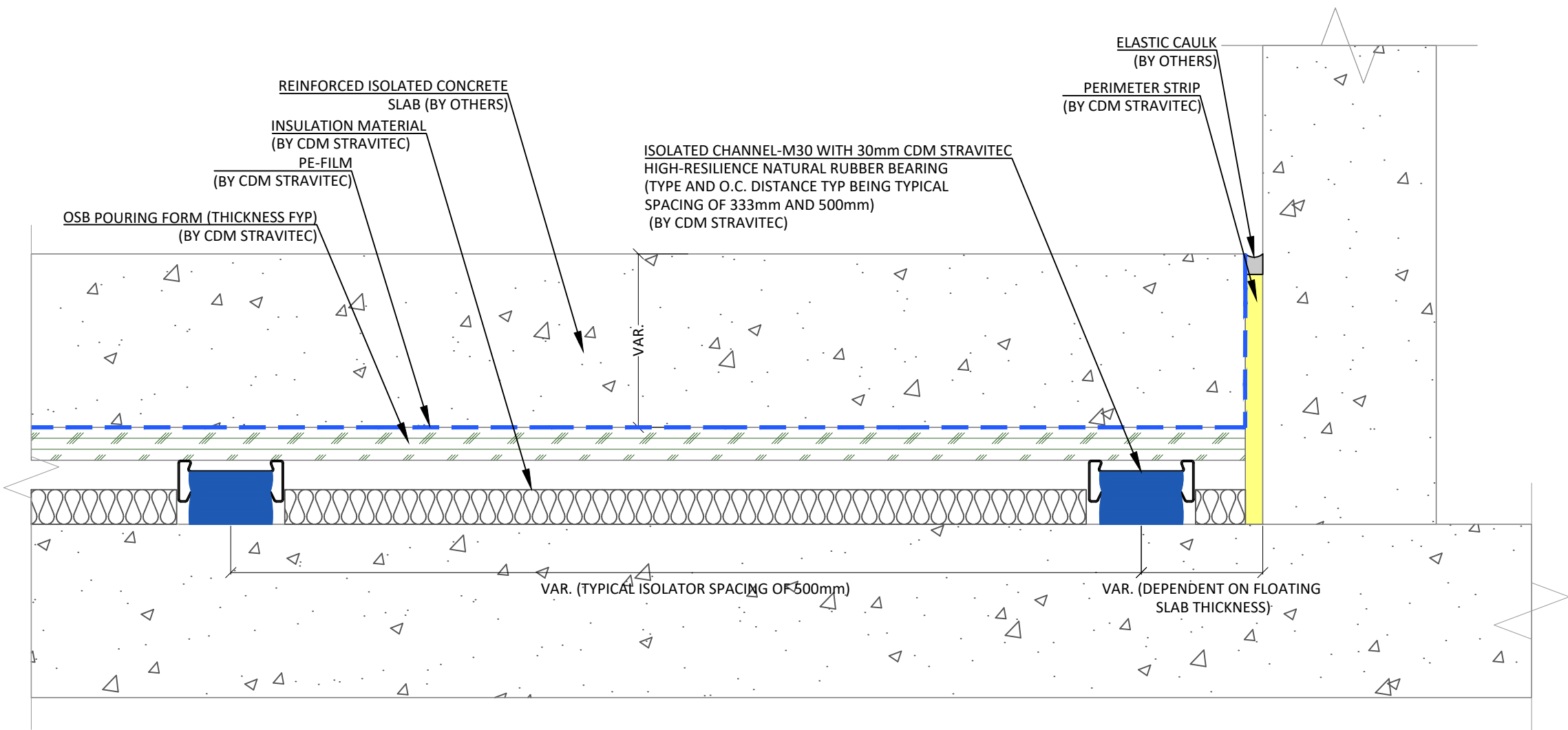
Scale: 1 : 3

Format: A3

Design: CRU

Check: CRU

Page 03 of 1



Notes

System Stravifloor Channel (EN)

1. The structural floor should comply with the required tolerances regarding gradient (0,1 % or 1 mm/m) and smoothness (max. 2 mm). It should be dry and free of obstacles, discontinuities, dust, etc.

2. A rigid connection should be avoided between the floating slab and all vertical elements (as walls, columns, ...) by adding a void or a layer of lateral isolation between the isolated slab and the vertical element.

For more detailed information ask for Stravifloor Channel Installation Manual.

MINIMUM SYSTEM TOTAL BUILD-UP HEIGHT (BEFORE DEFLECTION): 130 mm

Legend

First submission	2025/12/04	VPR	A
Revision Description	Date	Drawn	Rev.

Load table

Drawing based on



Reutenbeek 9-11
B-3090 Overijse Belgium
PH: +32 2 687 79 07
FX: +32 2 687 35 52
info@cdm-stravitec.com
www.cdm-stravitec.com

This drawing is exclusive property of CDM Stravitec, any reproduction or communication to third parties without prior authorisation is prohibited.

STRAVIFLOOR CHANNEL WITH 30 mm BEARINGS & CONCRETE FLOATING FLOOR

Typical Cross Section - Stravifloor Channel (EU)-04

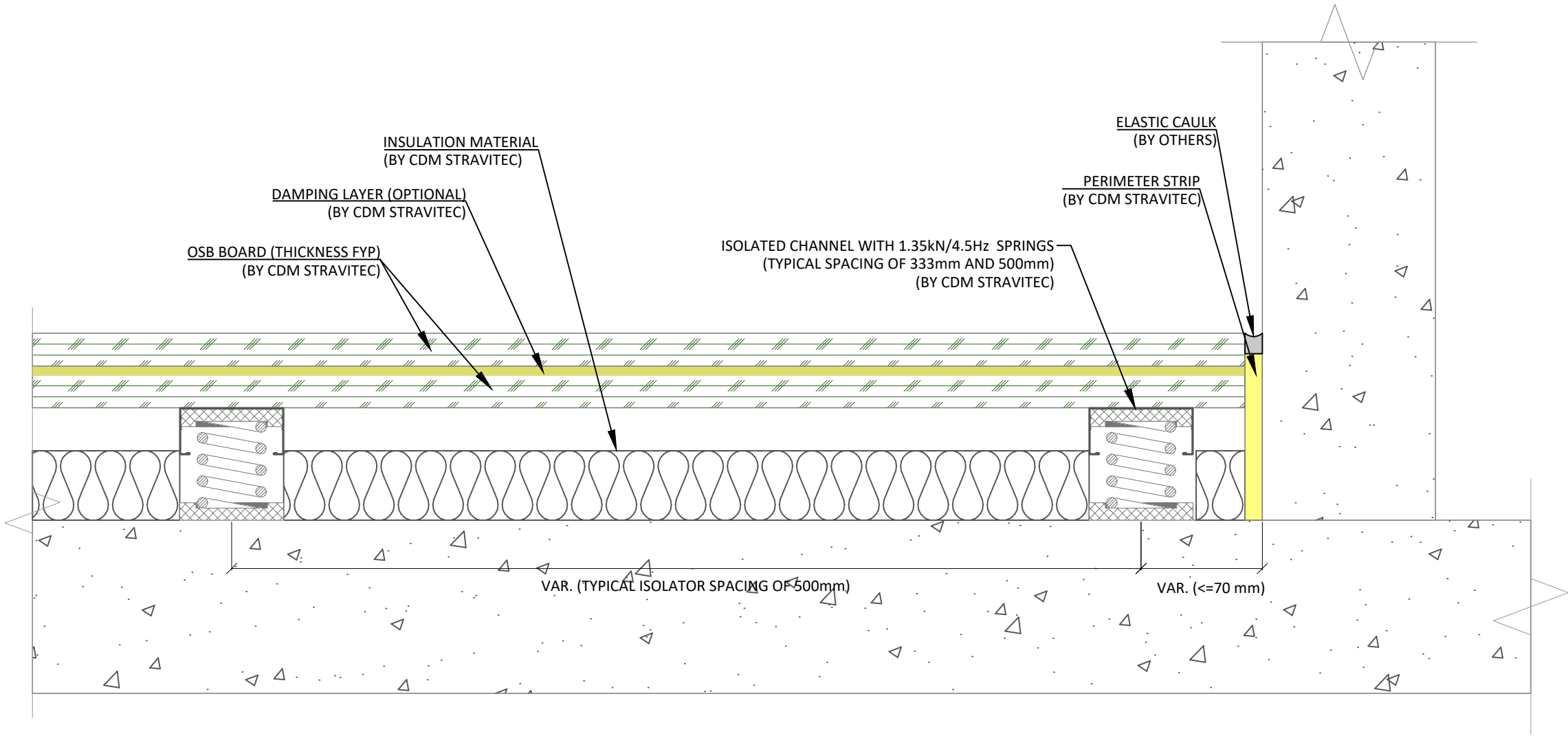
Design: CRU

Check: CRU

Scale: 1 : 3

Format: A3

Page 04 of 1



Notes	
System	Stravifloor Channel (EN)
<p>1. The structural floor should comply with the required tolerances regarding gradient (0,1 % or 1 mm/m) and smoothness (max. 2 mm). It should be dry and free of obstacles, discontinuities, dust, etc.</p> <p>2. A rigid connection should be avoided between the floating slab and all vertical elements (as walls, columns, ...) by adding a void or a layer of lateral isolation between the isolated slab and the vertical element.</p> <p>For more detailed information ask for Stravifloor Channel Installation Manual.</p>	
MINIMUM SYSTEM TOTAL BUILD-UP HEIGHT (BEFORE DEFLECTION): 94mm	

Legend

First submission	2025/12/04	VPR	A
Revision Description	Date	Drawn	Rev.

Load table

Drawing based on



Reutenbeek 9-11
B-3090 Overijse Belgium
PH: +32 2 687 79 07
FX: +32 2 687 35 52
info@cdm-stravitec.com
www.cdm-stravitec.com

This drawing is exclusive property of CDM Stravitec, any reproduction or communication to third parties without prior authorisation is prohibited.

STRAVIFLOOR CHANNEL WITH SPRING 4.5 Hz/ 1.35 kN & PANELIZED FLOATING FLOOR

Typical Cross Section - Stravifloor Channel (EU)-05

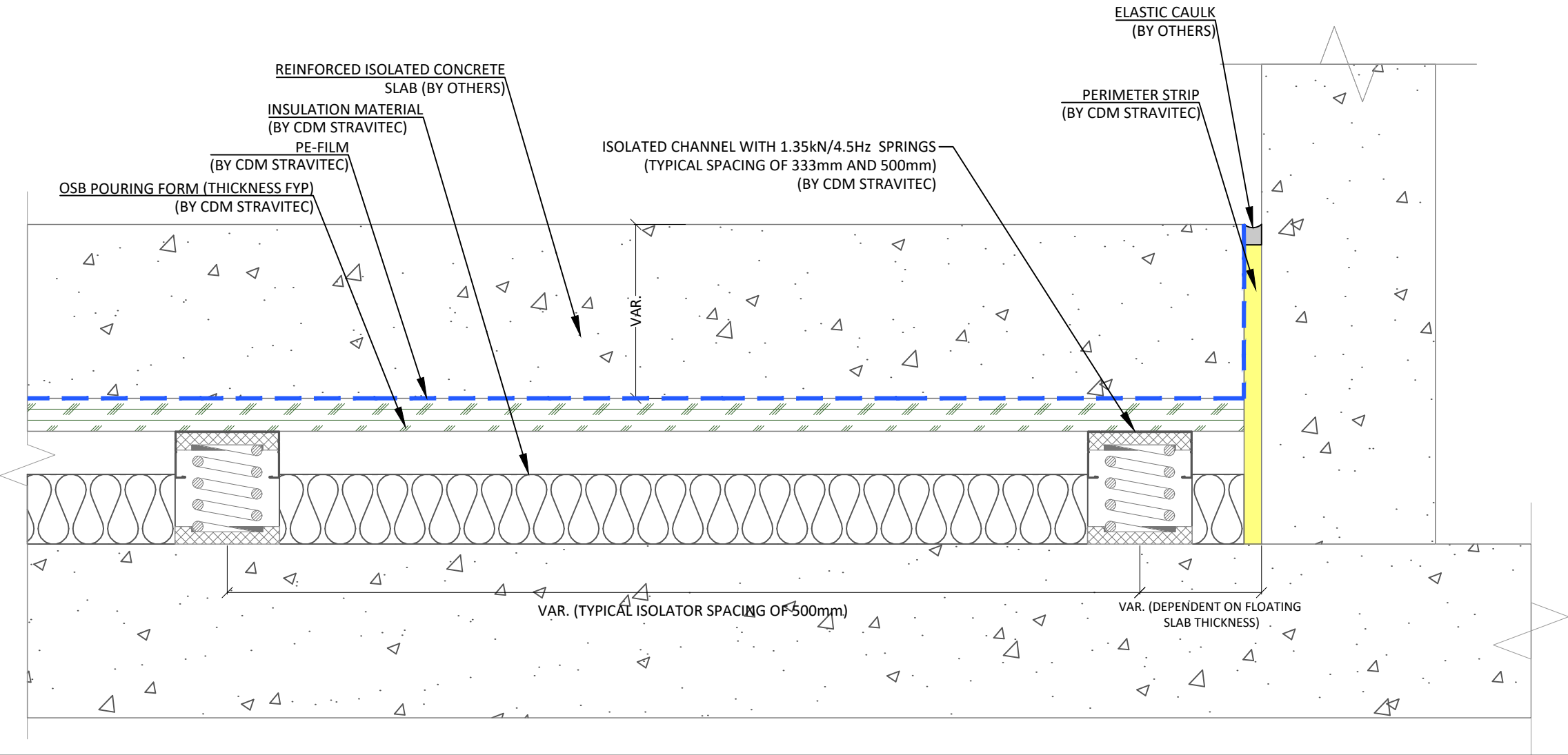
Design: VPR 2025/12/04

Check: CRU

Scale: 1 : 3

Format: A3

Page 05 of 1



Notes	
System	Stravifloor Channel (EN)
<div>1. The structural floor should comply with the required tolerances regarding gradient (0,1 % or 1 mm/m) and smoothness (max. 2 mm). It should be dry and free of obstacles, discontinuities, dust, etc.</div> <div>2. A rigid connection should be avoided between the floating slab and all vertical elements (as walls, columns, ...) by adding a void or a layer of lateral isolation between the isolated slab and the vertical element.</div>	
For more detailed information ask for Stravifloor Channel Installation Manual.	
MINIMUM SYSTEM TOTAL BUILD-UP HEIGHT (BEFORE DEFLECTION): 100mm	

Legend			
First submission		2025/12/04	VPR A
Revision Description		Date	Drawn Rev.

Load table

Drawing based on



Reutenbeek 9-11

B-3090 Overijse Belgium

PH: +32 2 687 79 07

FX: +32 2 687 35 52

info@cdm-stravitec.com

www.cdm-stravitec.com

This drawing is exclusive property of CDM Stravitec, any reproduction or communication to third parties without prior authorisation is prohibited.

STRAVIFLOOR CHANNEL WITH SPRING 4.5 Hz/ 1.35 kN & CONCRETE FLOATING FLOOR


Typical Cross Section - Stravifloor Channel (EU)-06

Design: VPR 2025/12/04

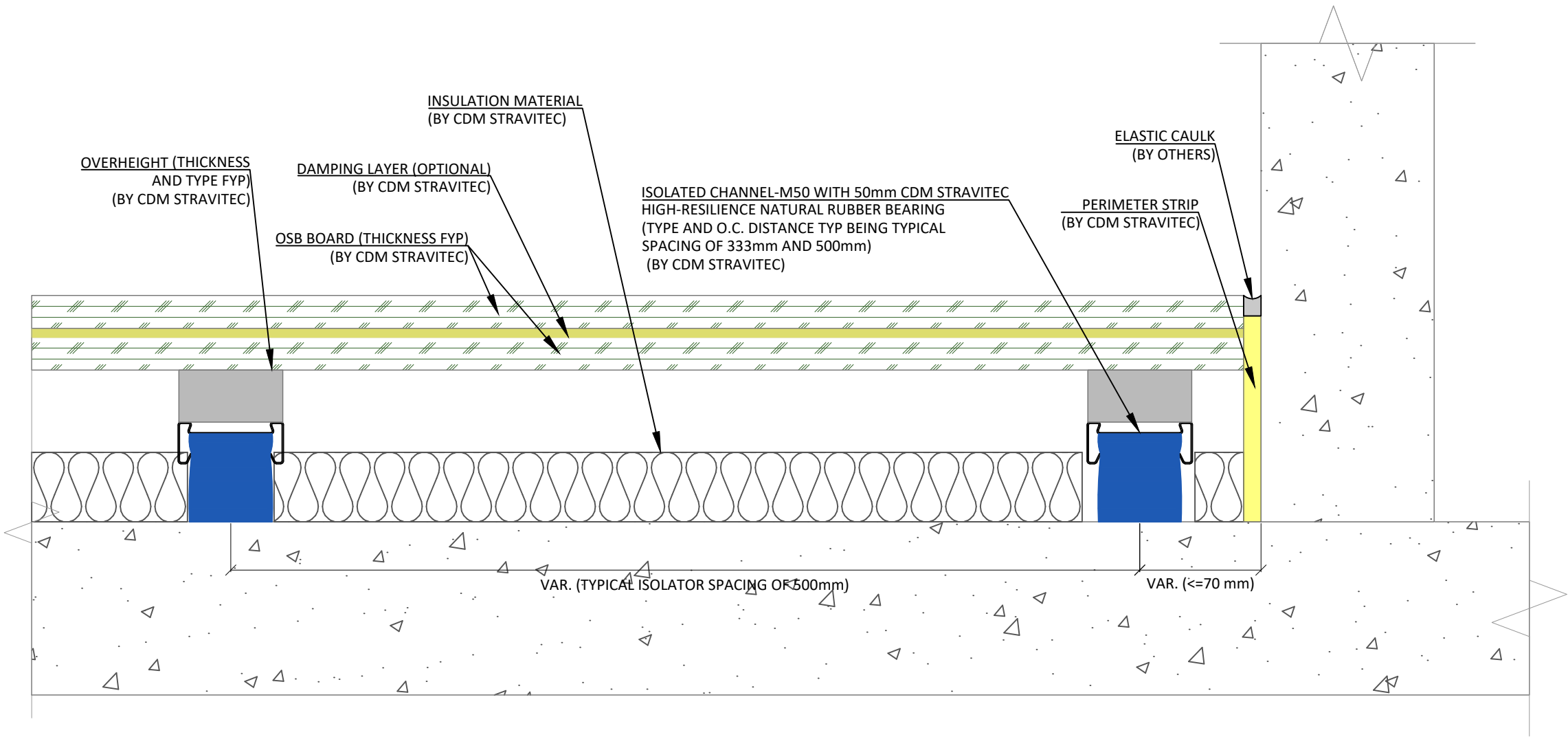
Check: CRU

Scale: 1 : 3

Format: A3



Page 06 of 1



Notes

System Stravifloor Channel (EN)

1. The structural floor should comply with the required tolerances regarding gradient (0,1 % or 1 mm/m) and smoothness (max. 2 mm). It should be dry and free of obstacles, discontinuities, dust, etc.

2. A rigid connection should be avoided between the floating slab and all vertical elements (as walls, columns, ...) by adding a void or a layer of lateral isolation between the isolated slab and the vertical element.

For more detailed information ask for Stravifloor Channel Installation Manual.

Legend

First submission	2025/12/04	VPR	A
Revision Description	Date	Drawn	Rev.

Load table

Drawing based on



Reutenbeek 9-11
B-3090 Overijse Belgium
PH: +32 2 687 79 07
FX: +32 2 687 35 52
info@cdm-stravitec.com
www.cdm-stravitec.com

This drawing is exclusive property of CDM Stravitec, any reproduction or communication to third parties without prior authorisation is prohibited.

STRAVIFLOOR CHANNEL WITH 50 mm BEARINGS & PANELIZED FLOATING FLOOR WITH OVERHEIGHT

Typical Cross Section - Stravifloor Channel (EU)-07

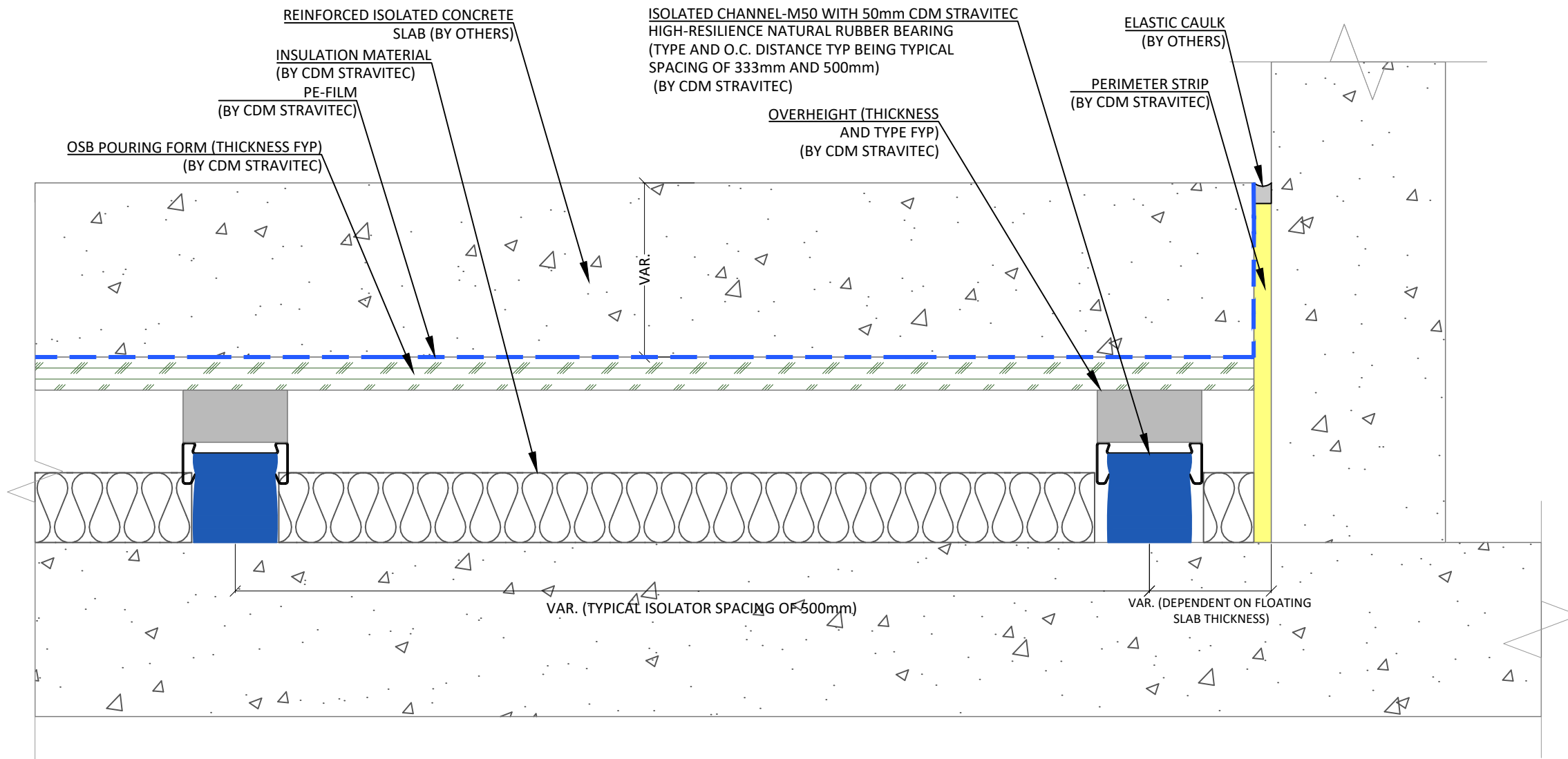
Design: VPR 2025/12/04

Check: CRU

Scale: 1 : 3

Format: A3

Page 07 of 1



Notes

SystemStravifloor Channel (EN)

1. The structural floor should comply with the required tolerances regarding gradient (0,1 % or 1 mm/m) and smoothness (max. 2 mm). It should be dry and free of obstacles, discontinuities, dust, etc.

2. A rigid connection should be avoided between the floating slab and all vertical elements (as walls, columns, ...) by adding a void or a layer of lateral isolation between the isolated slab and the vertical element.

For more detailed information ask for Stravifloor Channel Installation Manual.

Legend

First submission	2025/12/04	VPR	A
Revision Description	Date	Drawn	Rev.

Load table

Drawing based on

cdm**stravitec**

This drawing is exclusive property of CDM Stravitec, any reproduction or communication to third parties without prior authorisation is prohibited.

Reutenbeek 9-11
B-3090 Overijse Belgium
PH: +32 2 687 79 07
FX: +32 2 687 35 52
info@cdm-stravitec.com
www.cdm-stravitec.com

STRAVIFLOOR CHANNEL WITH 50 mm BEARINGS & CONCRETE FLOATING FLOOR WITH OVERHEIGHT

Typical Cross Section - Stravifloor Channel (EU)-08

Design: VPR 2025/12/04

Check: CRU

Scale: 1 : 3

Format: A3

Page 08 of 1

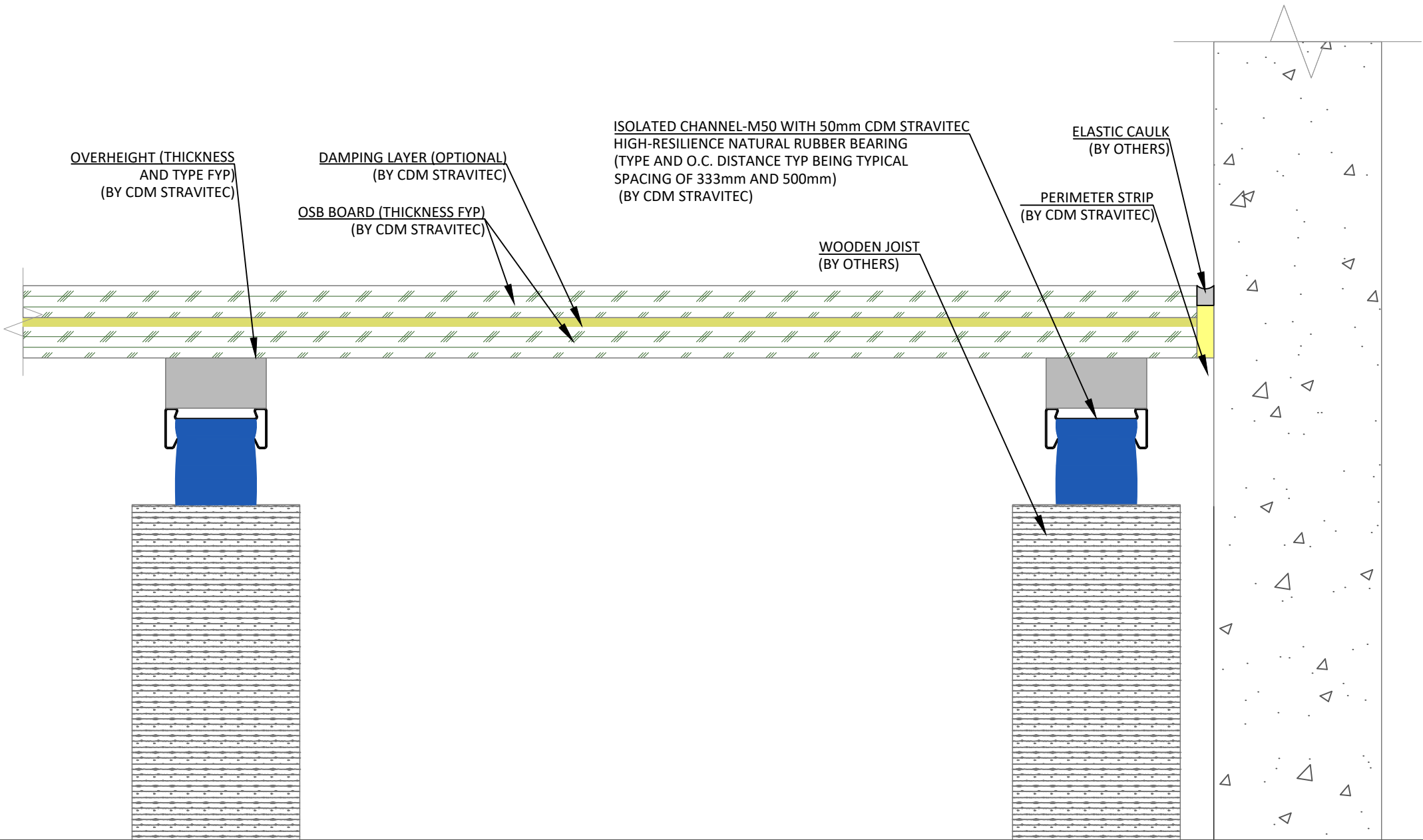
Notes

System Stravifloor Channel (EN)

1. The structural floor should comply with the required tolerances regarding gradient (0,1 % or 1 mm/m) and smoothness (max. 2 mm). It should be dry and free of obstacles, discontinuities, dust, etc.

2. A rigid connection should be avoided between the floating slab and all vertical elements (as walls, columns, ...) by adding a void or a layer of lateral isolation between the isolated slab and the vertical element.

For more detailed information ask for Stravifloor Channel Installation Manual.



Legend

First submission	2025/12/04	VPR	A
Revision Description	Date	Drawn	Rev.

Load table

Drawing based on



Reutenbeek 9-11
B-3090 Overijse Belgium
PH: +32 2 687 79 07
FX: +32 2 687 35 52
info@cdm-stravitec.com
www.cdm-stravitec.com

This drawing is exclusive property of CDM Stravitec, any reproduction or communication to third parties without prior authorisation is prohibited.

STRAVIFLOOR CHANNEL WITH 50 mm BEARINGS & PANELIZED FLOATING FLOOR WITH OVERHEIGHT AND WOODEN JOISTS

Typical Cross Section - Stravifloor Channel (EU)-09

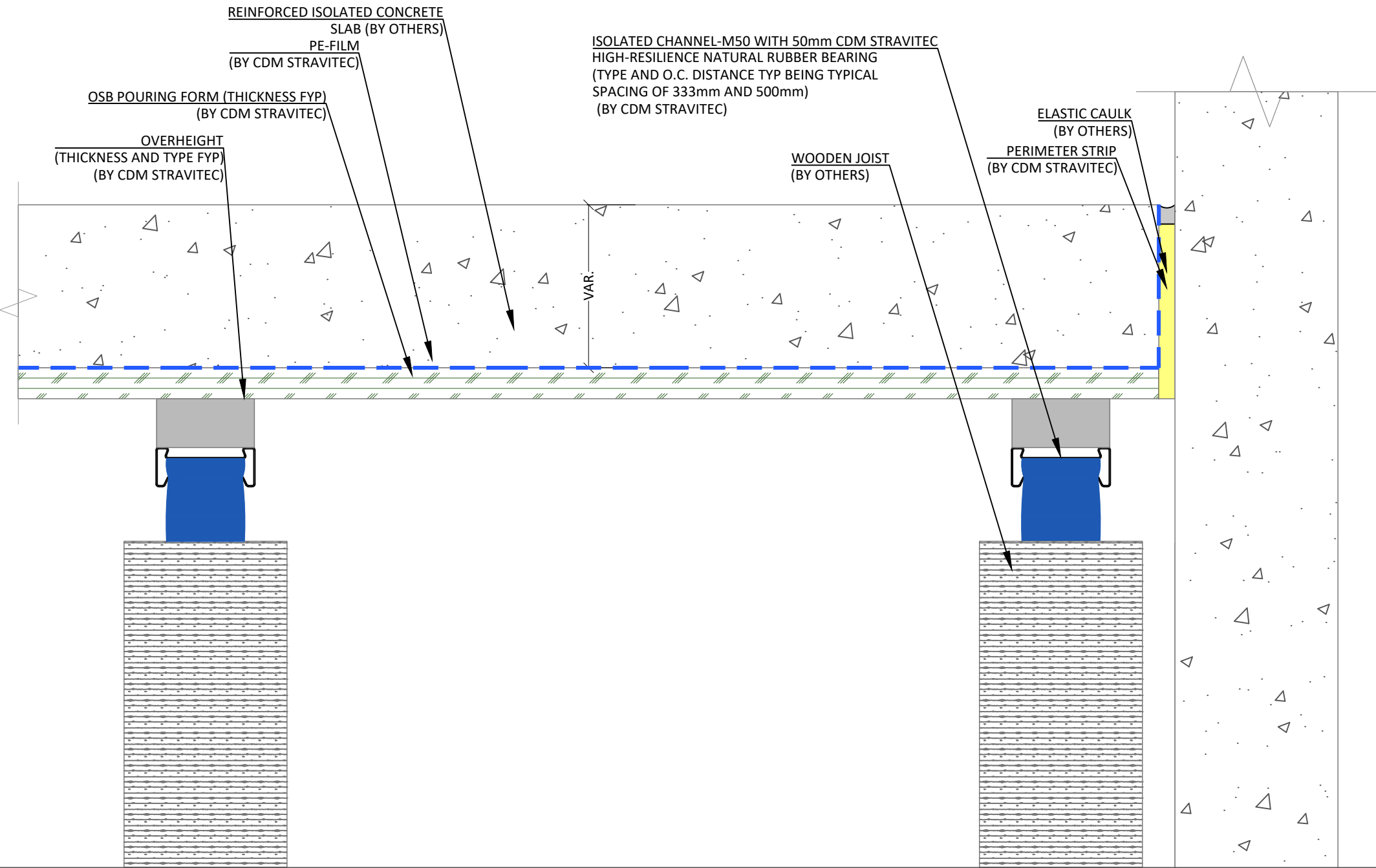
Design: VPR

Check: CRU

Scale: 1 : 3

Format: A3

Page 09 of 1



Notes

System Stravifloor Channel (EN)

1. The structural floor should comply with the required tolerances regarding gradient (0,1 % or 1 mm/m) and smoothness (max. 2 mm). It should be dry and free of obstacles, discontinuities, dust, etc.

2. A rigid connection should be avoided between the floating slab and all vertical elements (as walls, columns, ...) by adding a void or a layer of lateral isolation between the isolated slab and the vertical element.

For more detailed information ask for Stravifloor Channel Installation Manual.

Legend

First submission	2025/12/04	VPR	A
Revision Description	Date	Drawn	Rev.

Load table

Drawing based on



Reutenbeek 9-11
B-3090 Overijse Belgium
PH: +32 2 687 79 07
FX: +32 2 687 35 52
info@cdm-stravitec.com
www.cdm-stravitec.com

This drawing is exclusive property of CDM Stravitec, any reproduction or communication to third parties without prior authorisation is prohibited.

STRAVIFLOOR CHANNEL WITH 50 mm BEARINGS & CONCRETE FLOATING FLOOR WITH OVERHEIGHT AND WOODEN JOISTS

Typical Cross Section - Stravifloor Channel (EU)-10

Design: VPR 2025/12/04

Check: CRU

Scale: 1 : 3

Format: A3