

Stravilink WallFix^{*} Datasheet

Stravilink WallFix is a [sound-insulating wall](#) construction used to soundproof internal partition walls or structural walls. The system is comprised of a Stravilink WallFix-Base, a metal runner with isolation strip and elastomer washers to fix the horizontal runner to the floor and ceiling and a Stravilink WallFix-Bracket connector used to decouple the double wall from the structural wall.

By decoupling the internal partition wall or double wall from all sides, Stravilink WallFix effectively breaks the physical transmission of vibration noise between structural components.

The partition wall is completely free-standing and can be erected with any void. The insulation value depends on the cavity depth, which with this system can be determined on an individual basis.



CHARACTERISTICS

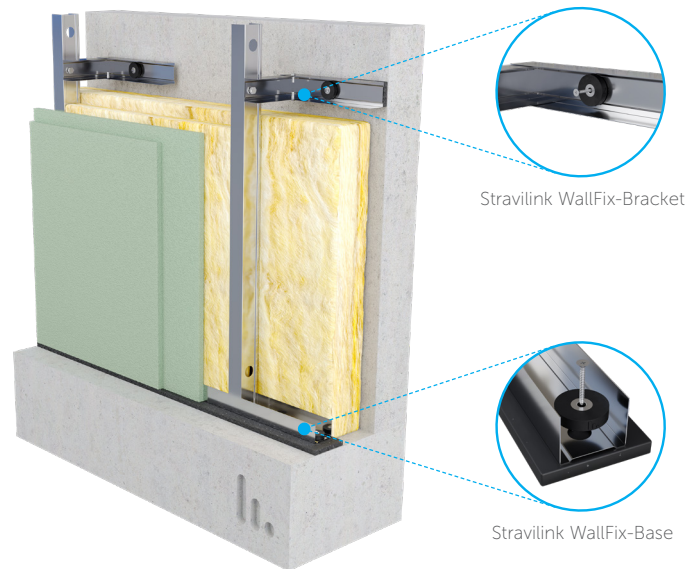
- Available in 50, 75 and 100 mm version
- Suited to fix 2 gypsum boards of 12.5 mm at each side
- Elastomer washer combined with metal washer to limit the number of operations
- Oversized hole in runner to avoid rigid connection

^{*}Previously known as CDM-WALL-FIX



SYSTEM COMPONENTS & DIMENSIONS

- Stravilink WallFix-Base metal runner 50, 75 or 100 mm
- Stravilink WallFix-Bracket metal connector
- Stravilink WallFix-Washer (4 pieces / runner)
- Hammer plugs 60 mm



Stravilink WallFix-Base

Material 0.6 mm sendzimir galvanized steel	Hole Diameter Ø 30 mm / 600 mm between centres
Dimensions 40 x 50/75/100 x 2400 mm	Elastomer Strip (Glued) 10 mm thick upcycled rubber

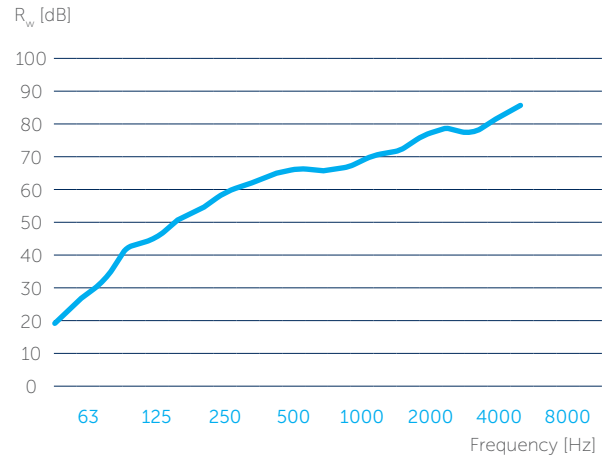
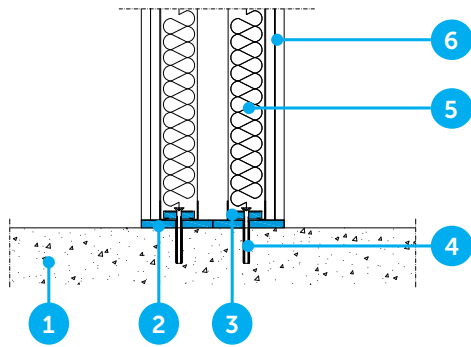
Stravilink WallFix-Bracket

Material 0.6 mm sendzimir galvanized steel	Hole Diameter Ø 30 mm
Dimensions 40 x 50 x 200 mm	Elastomer Strip (Glued) 10 mm thick upcycled rubber



2 x Stravilink WallFix-Base (50 mm) - Wall thickness 190 mm

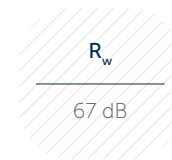
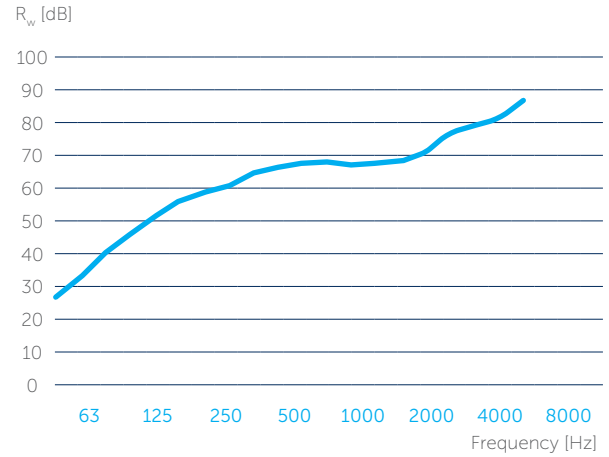
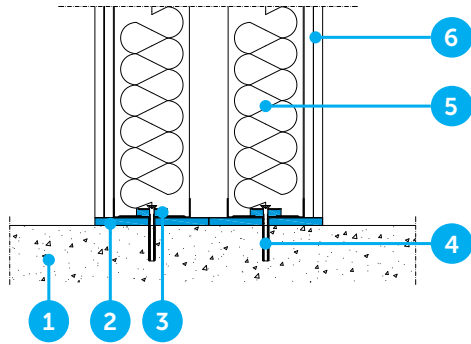
1. Structural floor
2. Stravilink WallFix-Base
3. Stravilink WallFix-Washer
4. Hammer plug 60 mm (no steel washer needed)
5. Mineral wool 40 mm
6. 2 x 12.5 mm gypsum board



* Measurement conform NBN EN ISO 10140-2:2010.
Laboratory report available upon request.

2 x Stravilink WallFix-Base (100 mm) - Wall thickness 290 mm

1. Structural floor
2. Stravilink WallFix-Base
3. Stravilink WallFix-Washer
4. Hammer plug 60 mm (no steel washer needed)
5. Mineral wool 80 mm
6. 2 x 12.5 mm gypsum board



DISCLAIMER

This information is accurate to the best of our knowledge at the time of issue. Information, data and recommendations provided are based on industry accepted testing and prior product usage. It is intended as descriptive of the general capabilities and performance of our products and does not endorse applicability for any particular project. We reserve the right to change products, performance, and data without notice. This document replaces all information supplied prior to the publication hereof.