

# Stravifloor Mat-W25<sub>x</sub><sup>\*</sup> Datasheet



Stravifloor Mat-W25<sub>x</sub> is a mat made of upcycled polyurethane foam and cellular rubber for **rolling noise isolation** of floating slabs and screeds.



## SYSTEM COMPONENTS & DIMENSIONS

- Mat dimension: 1.25 m x 5 m x 25/7 mm
- Pallet information: 6 rolls/pallet - pallet: 1200x800x1400 mm - 255 kg



## PHYSICAL & MECHANICAL PROPERTIES

### Mechanical properties

<b>Max. service load</b> 0.1 MPa	<b>Max. occasional load</b> 1 MPa	<b>Density<sup>(1)</sup></b> 400 kg/m <sup>3</sup>	<b>Surface weight<sup>(1)</sup></b> 6.4 kg/m <sup>2</sup>
<b>Tensile strength<sup>(2)</sup></b> > 0.25 MPa	<b>Elongation at break<sup>(2)</sup></b> > 50 %	<b>Creep rate<sup>(3)</sup></b> 0.86 % H/dec	<b>Cdyn<sup>(4)</sup></b> 6 MN/m <sup>3</sup>

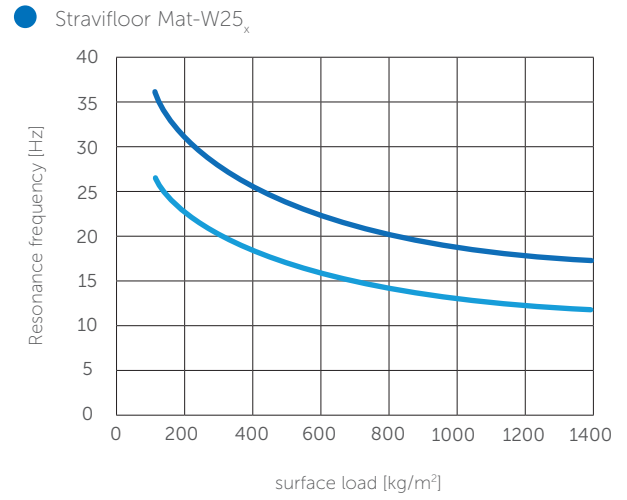
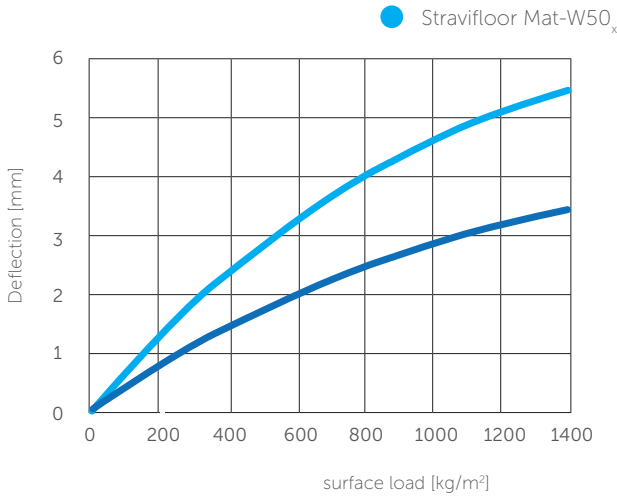
<sup>(1)</sup>ISO 845 - <sup>(2)</sup>ISO 37 - <sup>(3)</sup>ISO 8013, at 0.02 mPa - <sup>(4)</sup>EN 29052-1

### Thermal Properties

<b>Temperature range</b> -30°C / 80°C	<b>Reaction to fire</b> Class E <sup>(1)</sup> / Class B2 <sup>(2)</sup>	<b>Thermal conductivity</b> 0.10 W/m°C <sup>(3)</sup>	<b>Thermal resistance</b> 0.250 m <sup>2</sup> C/W <sup>(3)</sup>
--	---	--	--

<sup>(1)</sup>EN 13501-1 - <sup>(2)</sup>DIN 4102 - <sup>(3)</sup>EN 12667

\*Previously known as CDM-MTX-25/7



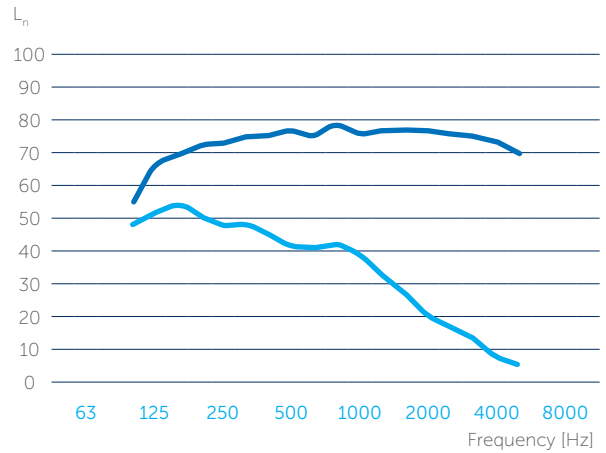
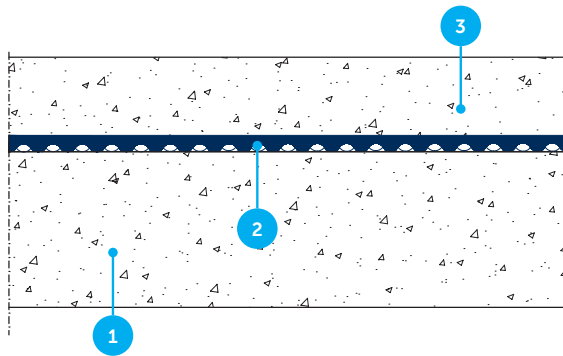
\*The total thickness is obtained by stacking two layers.

## ACOUSTICAL RESULTS

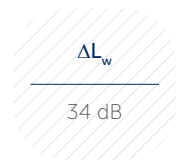
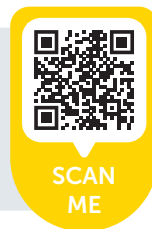
### Test Report Itecons ACL279-17\* - Test Setup

1. Standard reinforced concrete floor (140 mm)
2. Stravifloor Mat-W25<sub>x</sub>
3. Floating floor: reinforced concrete slab (70 mm)

\*Laboratory report available upon request



Other Stravifloor Jackup-E assemblies available on our test data platform Stravi-dB.



### DISCLAIMER

This information is accurate to the best of our knowledge at the time of issue. Information, data and recommendations provided are based on industry accepted testing and prior product usage. It is intended as descriptive of the general capabilities and performance of our products and does not endorse applicability for any particular project. We reserve the right to change products, performance, and data without notice. This document replaces all information supplied prior to the publication hereof.