

Stravifloor Mat-W_x Datasheet



Stravifloor Mat-W_x is a mat made of recycled polyurethane foam and cellular rubber for [impact noise isolation](#) of floating slabs and screeds



PHYSICAL & MECHANICAL PROPERTIES

- Mat dimension: 1.25 m x 5 m x 25 mm (49" x 197" x 1")
- Pallet: 6 rolls/pallet - pallet size: 1200 x 800 x 1400 mm (47" x 31-1/2" x 95") 240 kg (529 lbs)

Mechanical properties

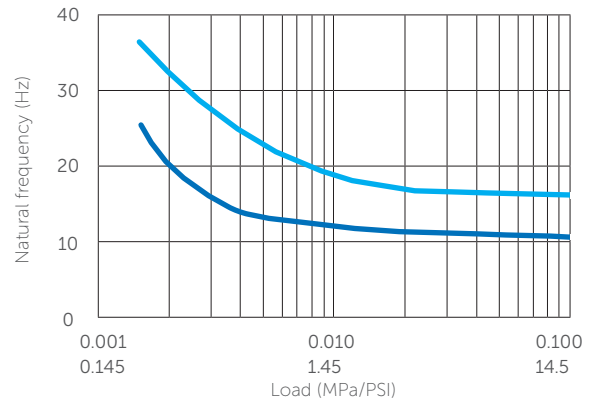
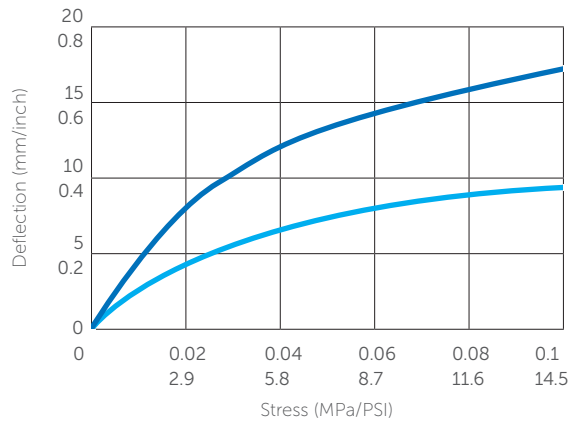
| | | | |
|---|--|--|---|
| Max. total load 0.1 MPa 14.5 PSI | Max. occasional load 1 MPa 145 PSI | Density⁽¹⁾ 400 kg/m ³ 25 lbs/ft ³ | Surface weight⁽¹⁾ 6.4 kg/m ² 1.31 lbs/ft ² |
| Tensile strength⁽²⁾ 0.25 MPa 36.26 PSI | Elongation at break⁽²⁾ > 50 % | Creep rate⁽³⁾ 1.65 % H/dec | Cdyn⁽⁴⁾ 6 MN/m ³ |

⁽¹⁾ISO 845 - ⁽²⁾ISO 37 - ⁽³⁾ISO 8013, at 0.02 mPa (2.9 PSI) - ⁽⁴⁾EN 29052-1

Thermal Properties

| | | | |
|--|---|---|--|
| Temperature range -30°C / 80°C | Reaction to fire Class E ⁽¹⁾ / Class B2 ⁽²⁾ | Thermal conductivity 0.1 W/m°C ⁽³⁾ | Thermal resistance 0.25 m ² °C/W ⁽³⁾ |
|--|---|---|--|

⁽¹⁾EN 13501-1 - ⁽²⁾DIN 4102 - ⁽³⁾EN 12667



- Stravifloor Mat-W25_x
- Stravifloor Mat-W50_x

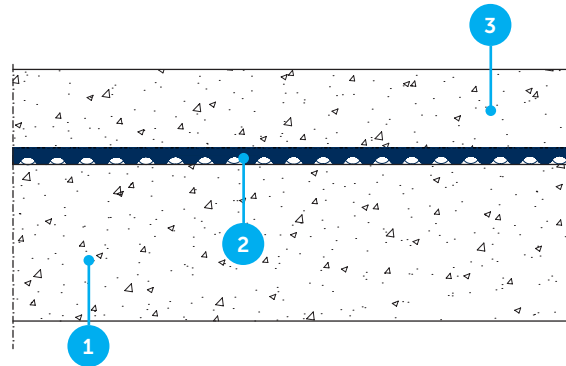


ACOUSTICAL RESULTS

Test Report Itecons ACL033-18* + Test Setup

1. Standard reinforced concrete floor 140 mm (5.5")
2. 1-layer Stravifloor Mat-W25_x 25 mm (1")
3. Floating floor: reinforced concrete slab (70 mm) (2-3/4")

*Laboratory report available upon request



DISCLAIMER

This information is accurate to the best of our knowledge at the time of issue. Information, data and recommendations provided are based on industry accepted testing and prior product usage. It is intended as descriptive of the general capabilities and performance of our products and does not endorse applicability for any particular project. We reserve the right to change products, performance, and data without notice. This document replaces all information supplied prior to the publication hereof.