

# Stravifloor Deck

## Installation Manual

### Installation Tools and Components

- Stanley knife
- Ink marker
- Pocket tape measure
- Cross line laser (optional)
- Chalk line with gear ratio
- Leverage sheet metal snips
- Angle grinder (w/ carborundum disks)
- Battery powered screwdriver (w/ self-drilling screws)
- Adhesive spray and tape (if the perimeter isolation is done with a material different than the self-adhesive CDM Stravitec's Perimeter Strip)
- Personal protective equipment (PPE)

## 1 / Subfloor & System Components Preparation

The structural floor should comply with the required tolerances regarding the gradient (0,1% or 1 mm/m) and smoothness (max. 2 mm) prior to installation of the CDM Stravitec floating floor.

The subfloor should be dry and clean of any debris (dust, dirt, grease, foreign objects) prior to installation.

Unpack and unroll the various components and allow them to acclimatise to their environment for 24 hours or more before installation.

## 2 / Lateral Isolation Strip

Install Perimeter Strips against any walls, columns, and other vertical structural and non-structural elements.

The perimeter isolation strip should cover the entire lateral section from subfloor level to the top level of the finish flooring layer.



### 3 / Stravifloor Channel

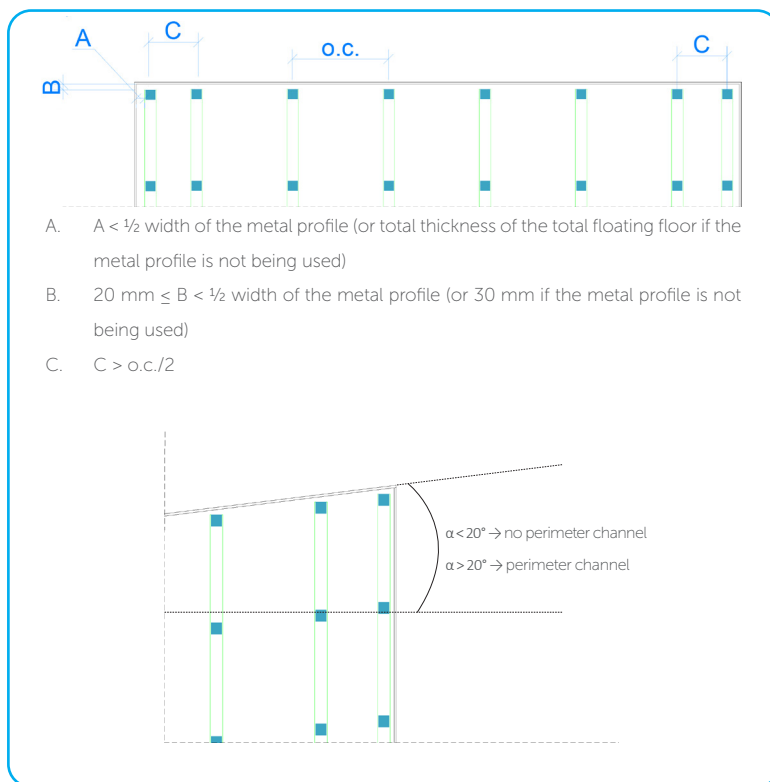
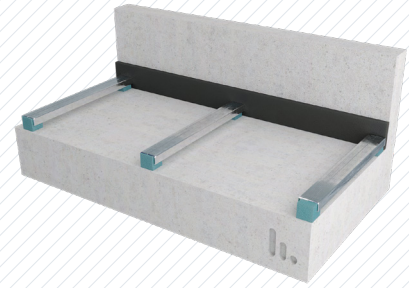
Spread out the Isolated channels to their required location. The isolated channels do not have to be glued or fixed to the structural floor. If necessary, level the Isolated channels with spacers (stiff shims) placed under the CDM Stravitec elastomer pads.

The distance between the first steel channel parallel to the wall (perimeter channel) and the perimeter strip (A) will be defined over the course of the project, but as a general rule, should be on maximum  $1/2$  of the width of the metal profile used as lateral formwork or - if this type of profile is not being used - smaller than the total thickness of the floating floor. The distance between the end of the steel channel to the perpendicular lateral isolation layer (B) must be defined on project, but should always be  $\geq 20$  mm and  $< 1/2$  width of the metal profile (or 30 mm if the metal profile is not being used).

The distance between the first two isolated channels closest to the wall (c-c) (C) must be the same on both sides and  $> o.c./2$  (o.c. as well as the mentioned distance defined in the design phase).

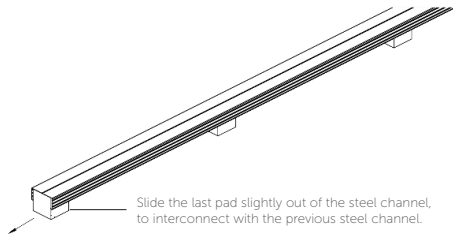
When the angle between the imaginary line perpendicular to the steel channels and the wall at the end of the same steel channels is  $< 20$  degrees, no perimeter channel is needed. Perimeter channels must be used when:

- the angle between the imaginary line perpendicular to the steel channels and the wall at the end (or bottom) of the same steel channels is  $\geq 20$  degrees;
- where it is necessary to compensate a higher loading of the perimeter zone.





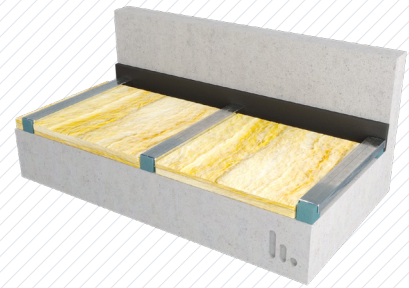
Connecting steel channels must always be supported by an elastomer pad to prevent deformation of unsupported steel channels under load. Isolated Channels are delivered with an elastomer pad already inserted at the end of each steel channel. Slide the pad half out of the steel channel so that you can install the previous steel channel onto the protruding pad. Turn the very first steel channel with the fully supported end towards the wall. The other side will come to rest on the protruding pad of the next steel channel.



#### 4 / Absorption Layer

Lay down low density mineral fiber wool in between the isolated channels. The thickness of the absorption layer should be smaller than the void after elastomer deflection.

Make sure not to place mineral wool under the steel channels.



#### 5 / Metal Edge Profiles

Install metal edge profiles around the perimeter. The profiles will be used as side formwork and thus, should cover the entire lateral section of the future concrete or screed floor.

More flexible lateral formwork can be used if the walls and other vertical elements are not straight.



## 6 / Dovetailed Metal Decking

Safety warning: the metal edges of the dovetailed sheets are sharp. Always wear protective gloves and safety shoes.

The standard procedure is to lay the first row of sheets lengthwise. Place the first sheet with the blue print facing downwards, the following sheet with the print facing upwards.

The adjacent row starts with a sheet with the blue print facing upwards and so on. The decking sheets can also be laid in stretcher bond. They must be laid at right angles across the isolated channels, meaning that the profiled section of the decking sheets must be perpendicular to the isolated channels.

At the overlap, the bottom panels must be fully supported by isolated channels. Ideally, the center of the isolated channel is 50 mm removed from the short end of the bottom panel. Follow CDM Stravitec construction drawings for more information.

### Crosscut overlaps

Crosscut overlaps are made by "clicking" the sheets into each other alternately (blue print downwards, then upwards) with a minimum overlap of 100 mm. Crosscut overlaps can be adjusted by simply sliding the sheets into or apart from each other once "clicked" into place. It is easier to first click the sheets together on a hard and stable surface.

### lengthwise overlaps

Preferably, overlaps are not limited to the side flanges. In order to make the floating floor less vulnerable to construction traffic, it is necessary to include part of the profile itself in the overlap. Therefore, slide the side flanges as far as possible over the first profile. The upright part of the first profile will butt against the upright part of the first profile of the adjacent sheet.

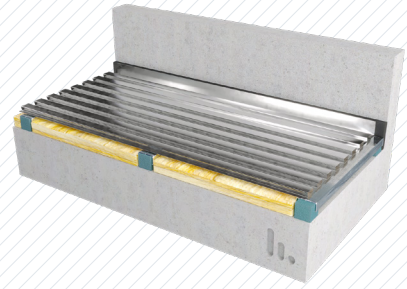
### Shortening and cut-outs

Use a carborundum disk to cut the decking sheets to size, both widthwise and lengthwise.

Cutouts can be made with the same tool or with a jigsaw. Holes through a completed floating floor can be made with a core drill (for acoustical reasons, holes and rigid elements piercing the floor system must be avoided but if it is absolutely necessary to do so, a perimeter strip must be installed against the rigid element).

### Connection/gap between decking sheets and the edge perimeter profile

To prevent infiltration of concrete or screed that will be poured in situ on the decking sheets, the joints must be filled with an elastic sealer or a polyurethane foam. Pay attention to the final thickness so as not to compromise the floor stability.



## Connection between decking sheets and isolated channels

Decking sheets should be fixed (do not compress the profile) with round wire nails or self-drilling screws into the lower flange of the isolated channels. Use nails or screws of limited length as not to make contact with the structural floor after deflection of the system.

---

### 7 / General Application

Concrete should be on minimum a C20/25 fine grade aggregate concrete or C20F4 free flowing, self-levelling, liquid screed.

When installing the decking sheets, bear in mind that this initially serves only to support the concrete and will only start functioning as reinforcement after the concrete has set. Install reinforcements, if applicable, and pour concrete as per concrete floor design.

Uneven curing and setting of the concrete topping may result in concrete curling at the perimeter and corners. If concrete curling is a concern due to the apparent climate or large size/dimensions of the concrete pour, Stravifloor Deck panels must be temporarily fixed by using Parker screws that are screwed through wedge-shaped wooden flutes. After the concrete has cured sufficiently, remove the Parker screws and flutes and fill in the holes with mortar.

Alternatively, Stravifloor Deck can be pushed down from the ceiling by using studs or other temporary supports. Uneven drying can be avoided by covering the freshly poured concrete with a polyethylene film.

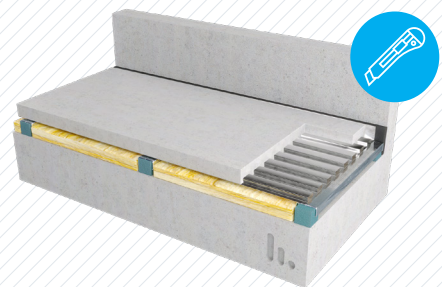
The uneven curing and setting of the concrete is related with climate conditions such as air humidity, temperatures and wind exposure but also with the concrete formulation (especially formulation water level). Concrete manufacture recommendations must be required.

---

### 8 / Trim & Caulk Perimeter

Trim any excess of the perimeter isolation material to the concrete floor height or finish floor height.

Seal the gap with elastic caulking.



## DISCLAIMER

This information is accurate to the best of our knowledge at the time of issue. Information, data and recommendations provided are based on industry accepted testing and prior product usage. It is intended as descriptive of the general capabilities and performance of our products and does not endorse applicability for any particular project. We reserve the right to change products, performance, and data without notice. This document replaces all information supplied prior to the publication hereof.