

## Stravilink WH<sup>\*</sup>

### Datasheet

Stravilink WH, resilient wall ties enable walls to be mechanically tied together without rigidly connecting them. Walls can be either stud walls (via bolt end) or brick block walls (via hooked end).



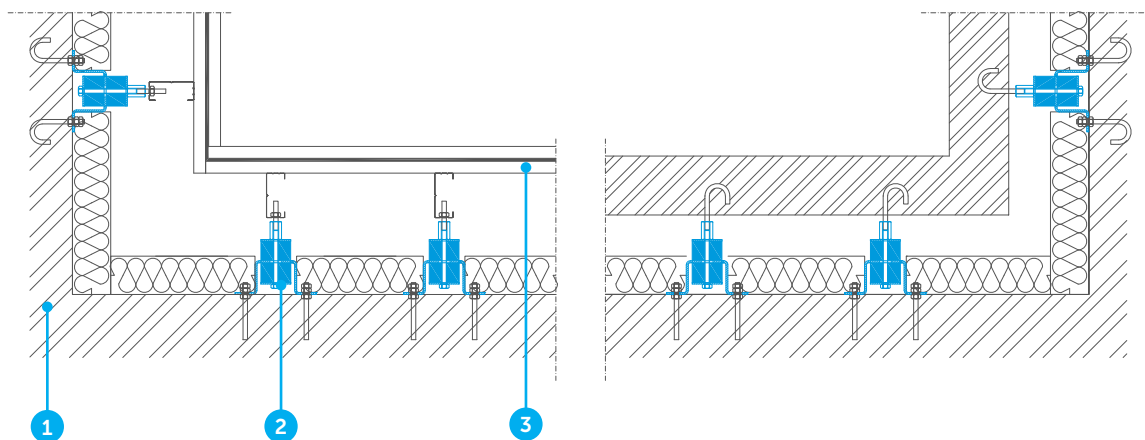
#### BENEFITS

- Fixings can be adapted to wall type
- Cost effective
- Easy to install
- Minimum void depth between walls is 60 mm
- Standard wall tie (Stravilink WH-350) is designed to take maximum 50 kg lateral force
- Can be adapted to meet different void depths and lateral forces
- Steel parts are Zinc plated
- For optimum results resilient strips should be used to provide isolation between the decoupled wall and the non-isolated structure. A wide range of roll sizes are available
- To specify which Stravilink WH wall tie you require CDM Stravitec's engineers will need the following information:
  - Void depth
  - Construction of supported wall - stud wall, block wall etc.
  - The depth of the block wall or stud to be supported
  - The method of fixation into the supporting wall

\*Previously known as CDM-WH



## TYPICAL ASSEMBLIES



1. Wall
2. Stravilink WH
3. Plasterboard, gypsum board or dry lining with optional damping layer

### DISCLAIMER

This information is accurate to the best of our knowledge at the time of issue. Information, data and recommendations provided are based on industry accepted testing and prior product usage. It is intended as descriptive of the general capabilities and performance of our products and does not endorse applicability for any particular project. We reserve the right to change products, performance, and data without notice. This document replaces all information supplied prior to the publication hereof.