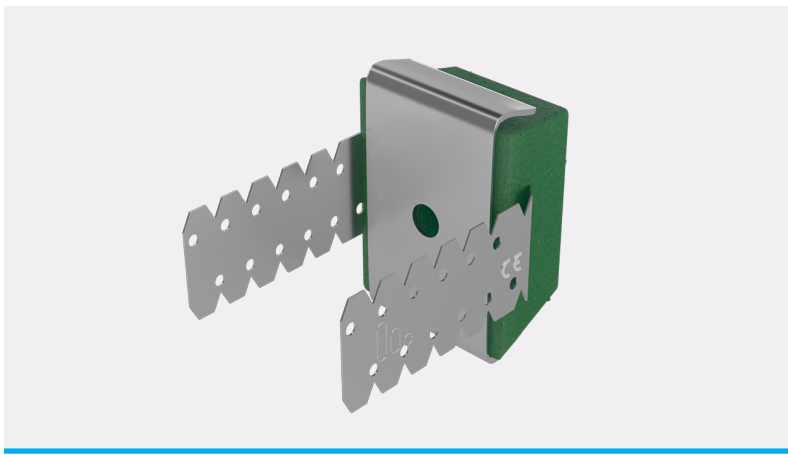


Stravilink QR^{*}

Datasheet



Stravilink QR acoustic brackets are designed to isolate dry wall constructions from the supporting wall; thereby improving the acoustic performance of the wall construction.



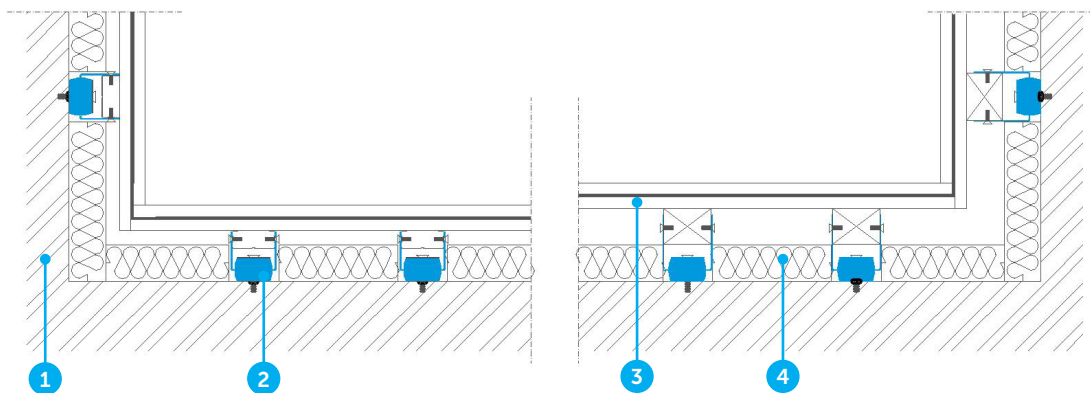
BENEFITS

- Cost effective
- Quick and easy to install
- Minimum void depth 50 mm (2")
- Can be used for supporting walls and ceilings
- Standard wall fixing (Stravilink QR 150) designed to take maximum 10 kg (22 lbs) lateral force per fixed leg
- Steel elements are Zinc plated
- Resilient strips are available to decouple the isolated wall from the supporting floor and adjacent walls
- To specify the Stravilink QR correctly, our engineers will need to know:
 - The height and weight of the dry wall construction - this will determine the type of the base isolation strip required
 - Details of any items supported off the walls - such as televisions etc

*Previously known as CDM-QR



TYPICAL ASSEMBLIES



1. Wall
2. Stravilink QR
3. Plasterboard, gypsum board or dry lining with optional damping layer
4. Absorption layer

DISCLAIMER

This information is accurate to the best of our knowledge at the time of issue. Information, data and recommendations provided are based on industry accepted testing and prior product usage. It is intended as descriptive of the general capabilities and performance of our products and does not endorse applicability for any particular project. We reserve the right to change products, performance, and data without notice. This document replaces all information supplied prior to the publication hereof.